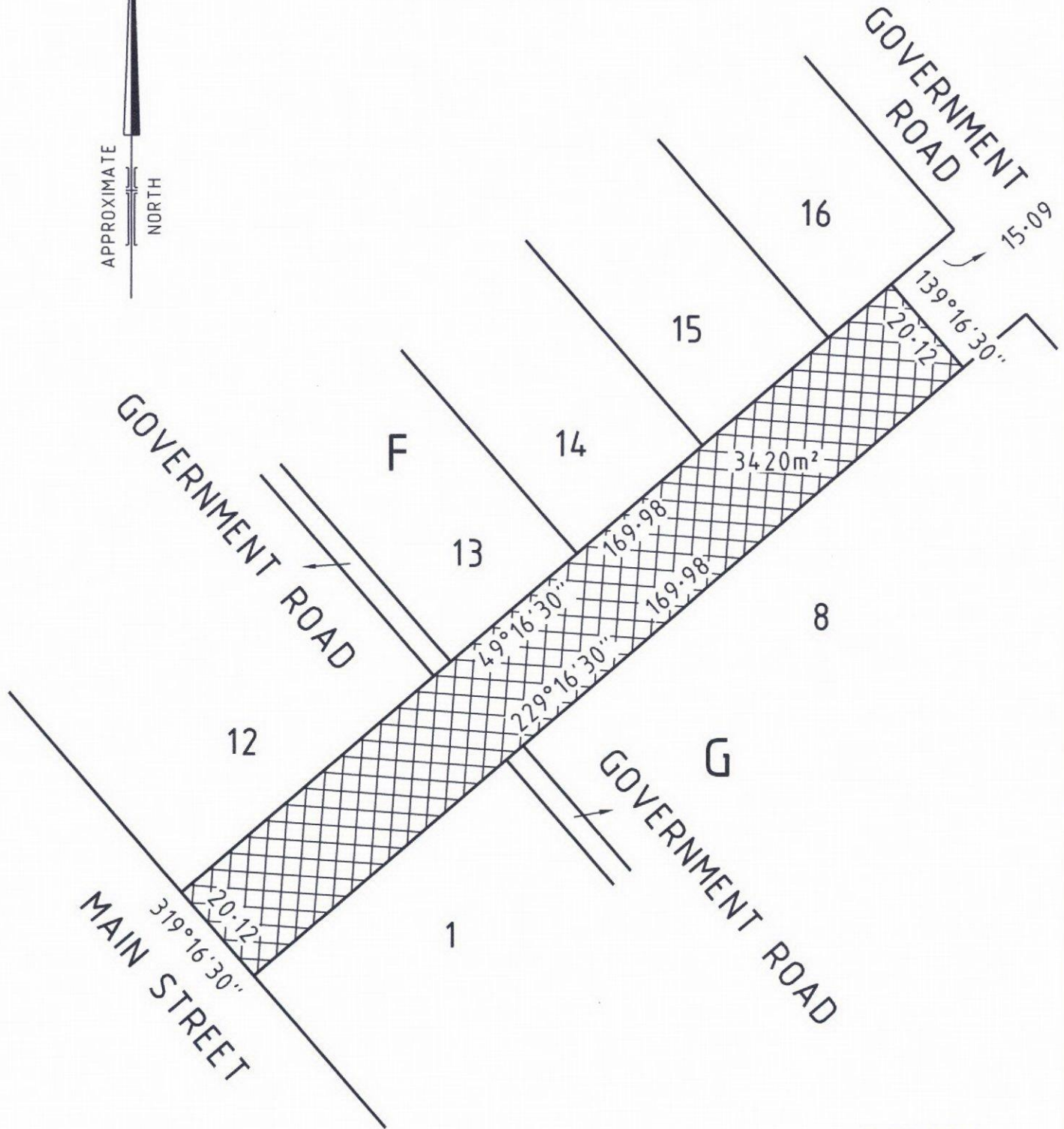


COUNTY OF BULN BULN  
PARISH OF MEENIYAN  
TOWNSHIP OF STONY CREEK



ROAD TO BE OPENED SHOWN THUS



SCALE 1:1000  
0 10 20 30 40  
LENGTHS ARE IN METRES  
(SHEET SIZE A4)

**BW** Beveridge Williams  
Leongatha ph : 03 5662 2630

PLAN OF ROAD OPENING  
STONY CREEK

VERSION 1  
23/04/2018

SOUTH GIPPSLAND SHIRE COUNCIL

DWG REF STONY CRK ROAD OPENING REF:PT18LEO-043