



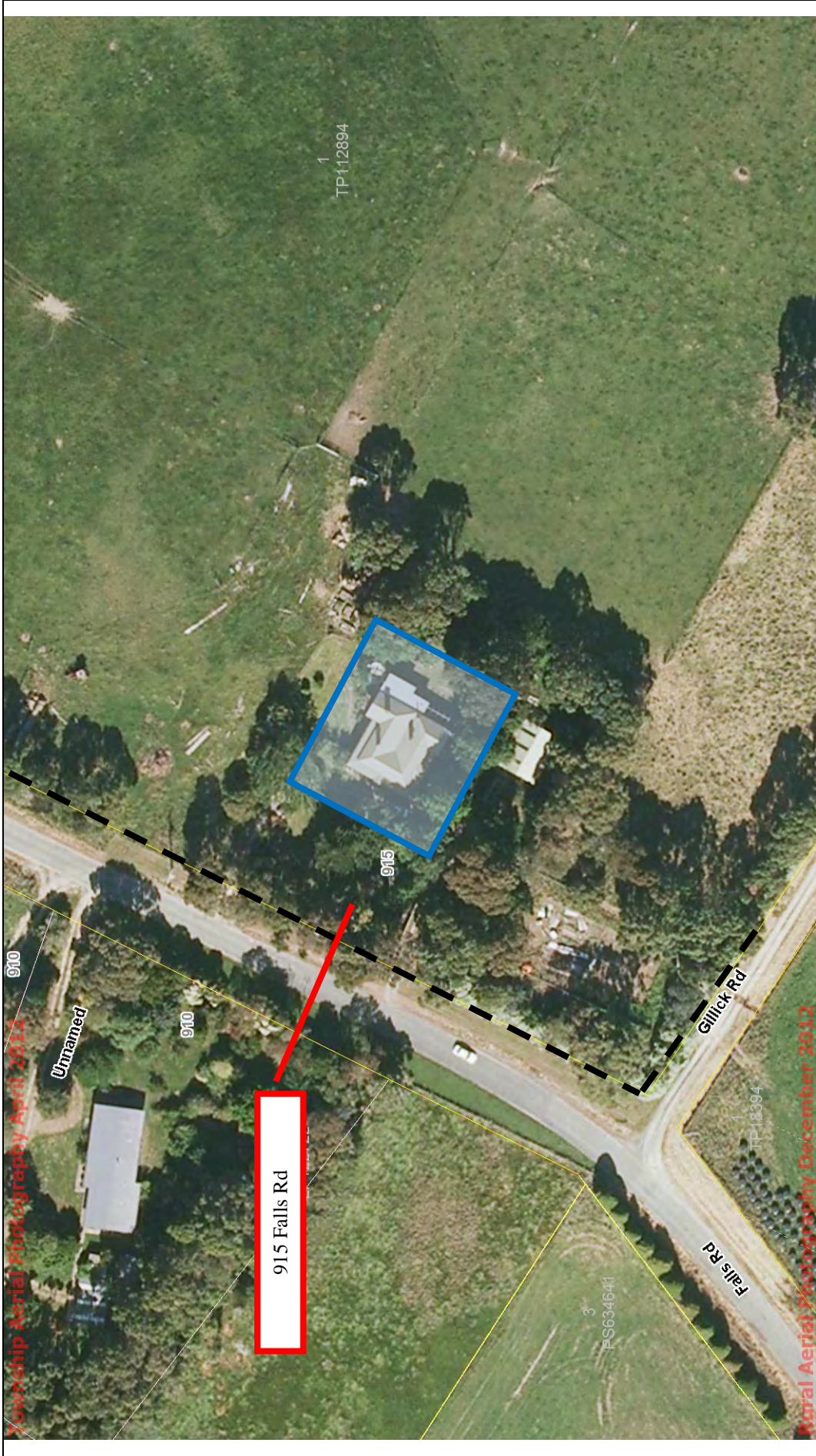
AGENDA APPENDIX
Council Meeting
Wednesday 26 February 2014

AGENDA ITEM FOR SEPARATE DISTRIBUTION TO COUNCILLORS AND EXECUTIVE LEADERSHIP TEAM DUE TO DOCUMENT SIZE.

THE ITEM IS ACCESSIBLE VIA THE COUNCIL WEBSITE OR BY CONTACTING COUNCIL ON 03 5662 9200.

E.3 PLANNING SCHEME AMENDMENT C92 - VOLUNTEER HERITAGE OVERLAY - JEETHO AND OTHERS

Appendix 2 – Maps of proposed Heritage Overlay application



915 Falls Road Fish Creek – Proposed Heritage Overlay



Disclaimer
 This map is a representation of the information currently held by the South Gippsland Shire Council. While every effort has been made to ensure the accuracy of the product, Council accepts no responsibility for any errors or omissions. Any feedback on omissions or errors would be appreciated. ©

About this document
 This map has been created for the purpose of showing basic locality information over South Gippsland Shire Council. Property boundary line network data is supplied by State Government. Any error should be reported to the GIS section of the South Gippsland Shire Council. Aerial Photography is dated 2012.



Map Zoom: 282.1 m

Township Aerial Photography April 2012

Rural Aerial Photography December 2011

425 Harding-Lawson Rd



425 Harding-Lawson Rd Fish Creek – Proposed Heritage Overlay



About this document

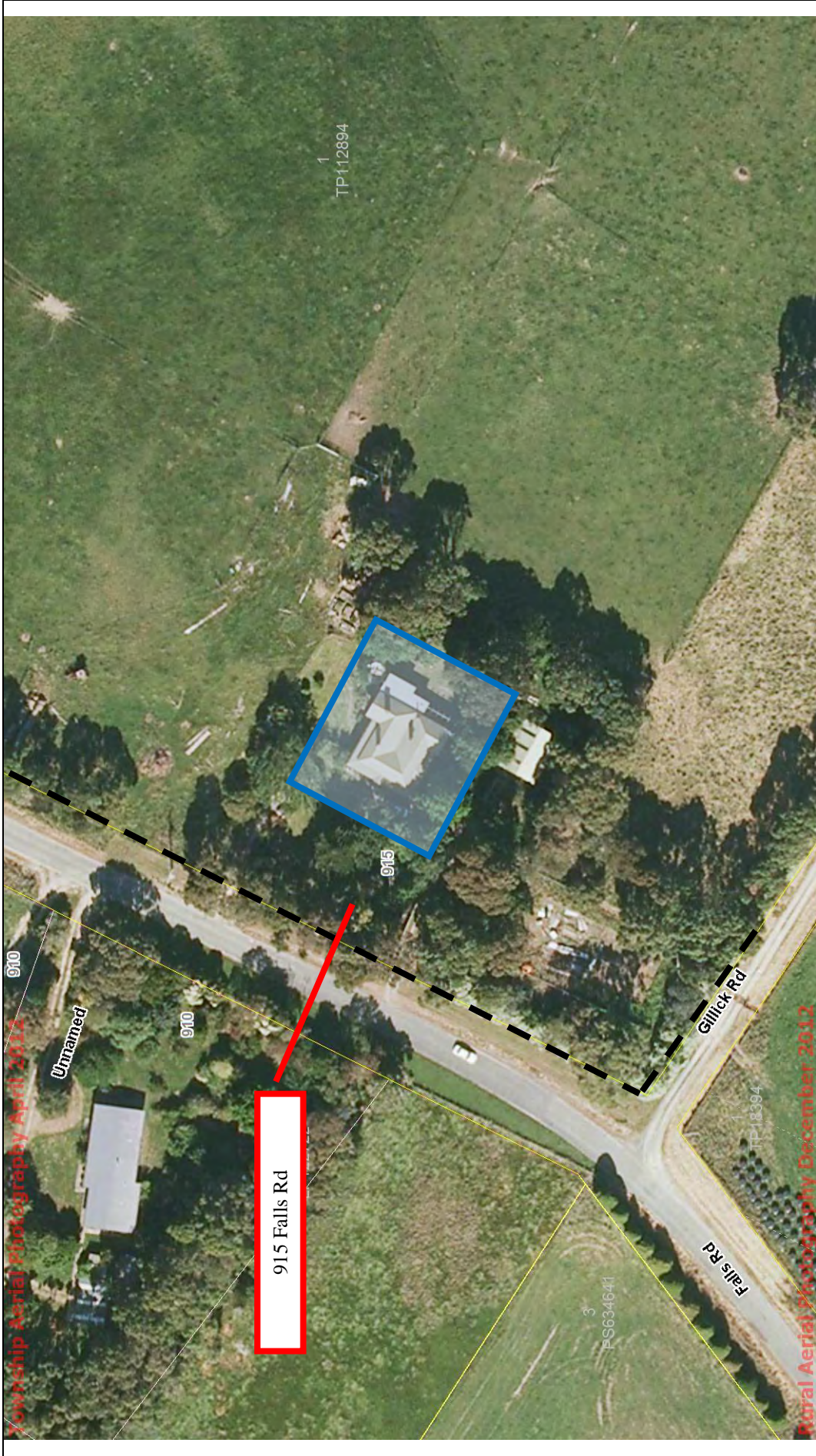
This map has been created for the purpose of showing basic locality information over South Gippsland Shire Council. Property boundary line network data is supplied by State Government. Any error should be reported to the GIS section of the South Gippsland Shire Council. Aerial Photography is dated 2012.

Disclaimer

This map is a representation of the information currently held by the South Gippsland Shire Council. While every effort has been made to ensure the accuracy of the product, Council accepts no responsibility for any errors or omissions. Any feedback on omissions or errors would be appreciated. ©



Map Zoom: 1501 m



915 Falls Road Fish Creek – Proposed Heritage Overlay



About this document
 This map has been created for the purpose of showing basic locality information over South Gippsland Shire Council. Property boundary line network data is supplied by State Government. Any error should be reported to the GIS section of the South Gippsland Shire Council. Aerial Photography is dated 2012.

Disclaimer
 This map is a representation of the information currently held by the South Gippsland Shire Council. While every effort has been made to ensure the accuracy of the product, Council accepts no responsibility for any errors or omissions. Any feedback on omissions or errors would be appreciated. ©



Map Zoom: 282.1 m

Township Aerial Photography April 2012

Rural Aerial Photography December 2011

425 Harding-Lawson Rd



425 Harding-Lawson Rd Fish Creek – Proposed Heritage Overlay



About this document

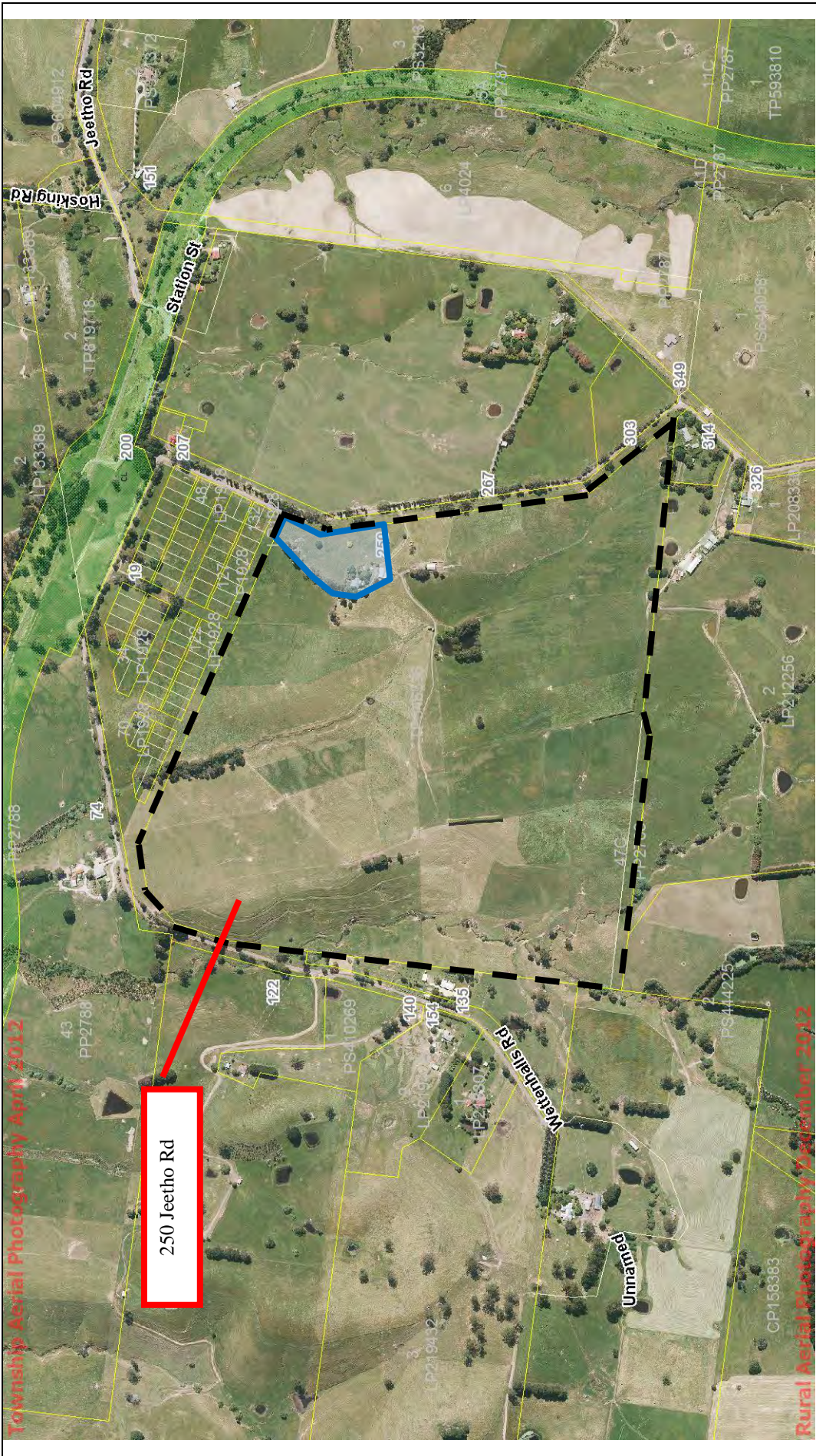
This map has been created for the purpose of showing basic locality information over South Gippsland Shire Council. Property boundary line network data is supplied by State Government. Any error should be reported to the GIS section of the South Gippsland Shire Council. Aerial Photography is dated 2012.

Disclaimer

This map is a representation of the information currently held by the South Gippsland Shire Council. While every effort has been made to ensure the accuracy of the product, Council accepts no responsibility for any errors or omissions. Any feedback on omissions or errors would be appreciated. ©



Map Zoom: 1501 m



Township Aerial Photography April 2012

Rural Aerial Photography 2 September 2012

250 Jeetho Rd



250 Jeetho Rd Jeetho – proposed Heritage Overlay



About this document
 This map has been created for the purpose of showing basic locality information over South Gippsland Shire Council. Property boundary line network data is supplied by State Government. Any error should be reported to the GIS section of the South Gippsland Shire Council. Aerial Photography is dated 2012.

Disclaimer
 This map is a representation of the information currently held by the South Gippsland Shire Council. While every effort has been made to ensure the accuracy of the product, Council accepts no responsibility for any errors or omissions. Any feedback on omissions or errors would be appreciated. ©



Map Zoom: 252 m



14 Bridge St Korumburra – Proposed Heritage Overlay



About this document

This map has been created for the purpose of showing basic locality information over South Gippsland Shire Council. Property boundary line network data is supplied by State Government. Any error should be reported to the GIS section of the South Gippsland Shire Council. Aerial Photography is dated 2012.

Disclaimer

This map is a representation of the information currently held by the South Gippsland Shire Council. While every effort has been made to ensure the accuracy of the product, Council accepts no responsibility for any errors or omissions. Any feedback on omissions or errors would be appreciated. ©



Map Zoom: 265.4 m



23 Bridge St Korumburra – Proposed Heritage Overlay



About this document

This map has been created for the purpose of showing basic locality information over South Gippsland Shire Council. Property boundary line network data is supplied by State Government. Any error should be reported to the GIS section of the South Gippsland Shire Council. Aerial Photography is dated 2012.

Disclaimer

This map is a representation of the information currently held by the South Gippsland Shire Council. While every effort has been made to ensure the accuracy of the product, Council accepts no responsibility for any errors or omissions. Any feedback on omissions or errors would be appreciated. ©



Map Zoom: 117.8 m

Township Aerial Photography April 2012

Koral Aerial Photography December 2012



48 Bridge St Korumburra - Proposed Heritage Overlay



About this document

This map has been created for the purpose of showing basic locality information over South Gippsland Shire Council. Property boundary line network data is supplied by State Government. Any error should be reported to the GIS section of the South Gippsland Shire Council. Aerial Photography is dated 2012.

Disclaimer

This map is a representation of the information currently held by the South Gippsland Shire Council. While every effort has been made to ensure the accuracy of the product, Council accepts no responsibility for any errors or omissions. Any feedback on omissions or errors would be appreciated. ©



Map Zoom: 179.5 m



1A Victoria St Korumburra – Proposed Heritage Overlay



About this document

This map has been created for the purpose of showing basic locality information over South Gippsland Shire Council. Property boundary line network data is supplied by State Government. Any error should be reported to the GIS section of the South Gippsland Shire Council. Aerial Photography is dated 2012.

Disclaimer

This map is a representation of the information currently held by the South Gippsland Shire Council. While every effort has been made to ensure the accuracy of the product, Council accepts no responsibility for any errors or omissions. Any feedback on omissions or errors would be appreciated. ©



Map Zoom: 219.9 m

Township Aerial Photography April 2012



42 Brown St



42 Brown St Leongatha – proposed Heritage Overlay



About this document

This map has been created for the purpose of showing basic locality information over South Gippsland Shire Council. Property boundary line network data is supplied by State Government. Any error should be reported to the GIS section of the South Gippsland Shire Council. Aerial Photography is dated 2012.

Disclaimer

This map is a representation of the information currently held by the South Gippsland Shire Council. While every effort has been made to ensure the accuracy of the product, Council accepts no responsibility for any errors or omissions. Any feedback on omissions or errors would be appreciated. ©



Map Zoom: 195.4 m



37 Jeffrey Street Leongatha – Proposed Heritage Overlay



About this document

This map has been created for the purpose of showing basic locality information over South Gippsland Shire Council. Property boundary line network data is supplied by State Government. Any error should be reported to the GIS section of the South Gippsland Shire Council. Aerial Photography is dated 2012.

Disclaimer

This map is a representation of the information currently held by the South Gippsland Shire Council. While every effort has been made to ensure the accuracy of the product, Council accepts no responsibility for any errors or omissions. Any feedback on omissions or errors would be appreciated. ©



Map Zoom: 220 m

Township Aerial Photography April 2012

Aerial Aerial Photography December 2011



19 Long St Leongatha – Proposed HO



Map Zoom: 40x.5 m

Township Aerial Photography April 2012

Rural Aerial Photography December 2012



600 Boolarra
South-
Mirboo
North Rd



Map Zoom: 945.7 m

600 Boolarra South-Mirboo North Rd Mirboo North – Proposed Heritage Overlay

About this document
This map has been created for the purpose of showing basic locality information over South Gippsland Shire Council. Property boundary line network data is supplied by State Government. Any error should be reported to the GIS section of the South Gippsland Shire Council. Aerial Photography is dated 2012.

Disclaimer
This map is a representation of the information currently held by the South Gippsland Shire Council. While every effort has been made to ensure the accuracy of the product, Council accepts no responsibility for any errors or omissions. Any feedback on omissions or errors would be appreciated. ©



60 Ridgway Mirboo North - Proposed Heritage Overlay



About this document

This map has been created for the purpose of showing basic locality information over South Gippsland Shire Council. Property boundary line network data is supplied by State Government. Any error should be reported to the GIS section of the South Gippsland Shire Council. Aerial Photography is dated 2012.

Disclaimer

This map is a representation of the information currently held by the South Gippsland Shire Council. While every effort has been made to ensure the accuracy of the product, Council accepts no responsibility for any errors or omissions. Any feedback on omissions or errors would be appreciated. ©



Map Zoom: 227.1 m

Township Aerial Photography April 2012



Rural Aerial Photography December 2012



2 Wild Dog Rd Strzelecki – Proposed Heritage Overlay



Map Zoom: 1412 m

About this document
 This map has been created for the purpose of showing basic locality information over South Gippsland Shire Council. Property boundary line network data is supplied by State Government. Any error should be reported to the GIS section of the South Gippsland Shire Council. Aerial Photography is dated 2012.

Disclaimer
 This map is a representation of the information currently held by the South Gippsland Shire Council. While every effort has been made to ensure the accuracy of the product, Council accepts no responsibility for any errors or omissions. Any feedback on omissions or errors would be appreciated. ©



35 Stanley St Toora – Proposed Heritage Overlay



About this document

This map has been created for the purpose of showing basic locality information over South Gippsland Shire Council. Property boundary line network data is supplied by State Government. Any error should be reported to the GIS section of the South Gippsland Shire Council. Aerial Photography is dated 2012.

Disclaimer

This map is a representation of the information currently held by the South Gippsland Shire Council. While every effort has been made to ensure the accuracy of the product, Council accepts no responsibility for any errors or omissions. Any feedback on omissions or errors would be appreciated. ©



Map Zoom: 200.7 m

Township Aerial Photography April 2012

Rural Aerial Photography December 2012



46 Scannells Rd Toora North

LP 126566

LP 126566

Unnamed

Toora - Guyah Rd



46 Scannells Rd Toora North – Proposed Heritage Overlay



About this document

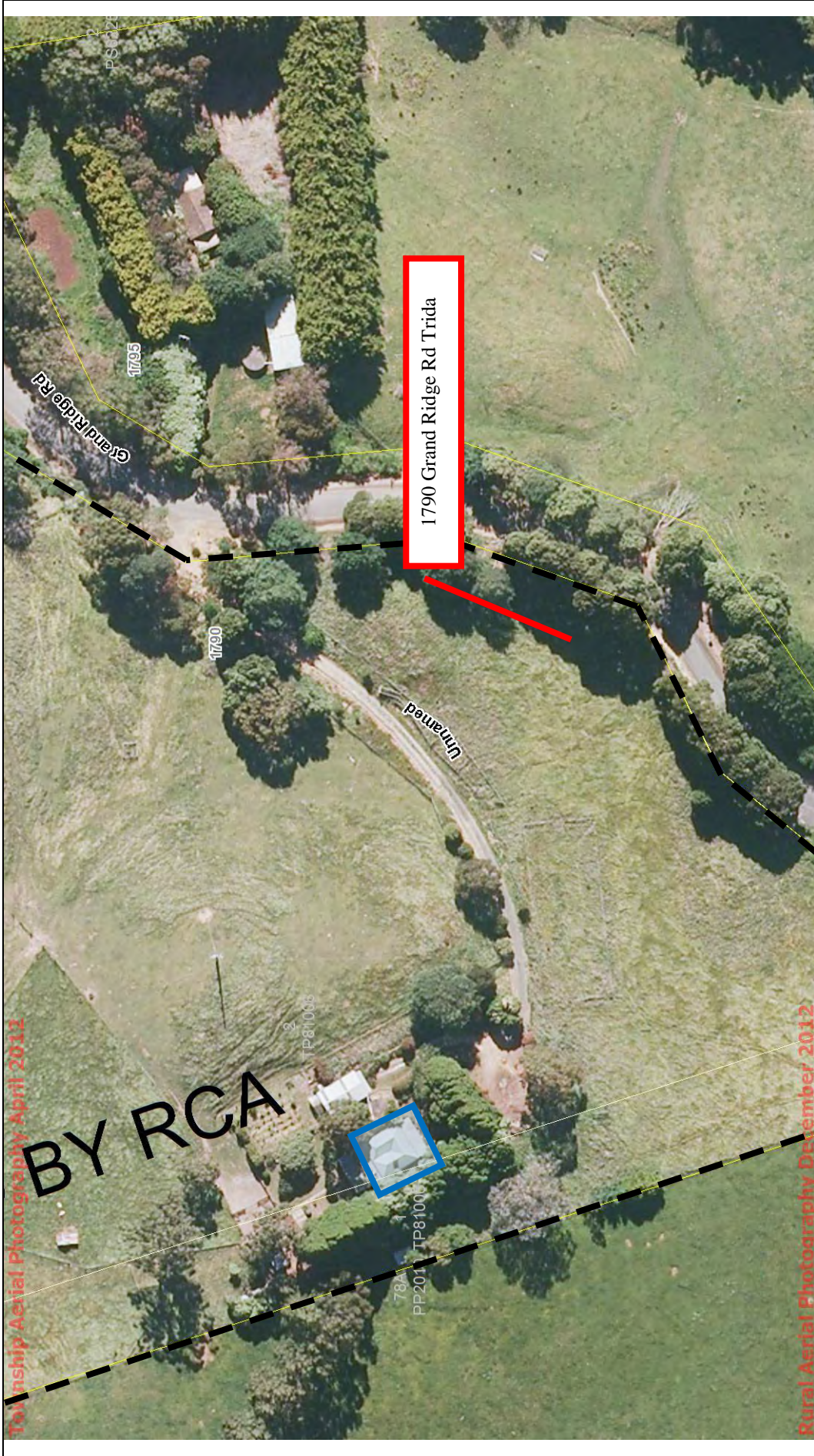
This map has been created for the purpose of showing basic locality information over South Gippsland Shire Council. Property boundary line network data is supplied by State Government. Any error should be reported to the GIS section of the South Gippsland Shire Council. Aerial Photography is dated 2012.

Disclaimer

This map is a representation of the information currently held by the South Gippsland Shire Council. While every effort has been made to ensure the accuracy of the product, Council accepts no responsibility for any errors or omissions. Any feedback on omissions or errors would be appreciated. ©



Map Zoom: 398.1 m



1790 Grand Ridge Rd Trida – Proposed Heritage Overlay



Disclaimer
 This map is a representation of the information currently held by the South Gippsland Shire Council. While every effort has been made to ensure the accuracy of the product, Council accepts no responsibility for any errors or omissions. Any feedback on omissions or errors would be appreciated. ©

About this document
 This map has been created for the purpose of showing basic locality information over South Gippsland Shire Council. Property boundary line network data is supplied by State Government. Any error should be reported to the GIS section of the South Gippsland Shire Council. Aerial Photography is dated 2012.



Map Zoom: 308.2 m