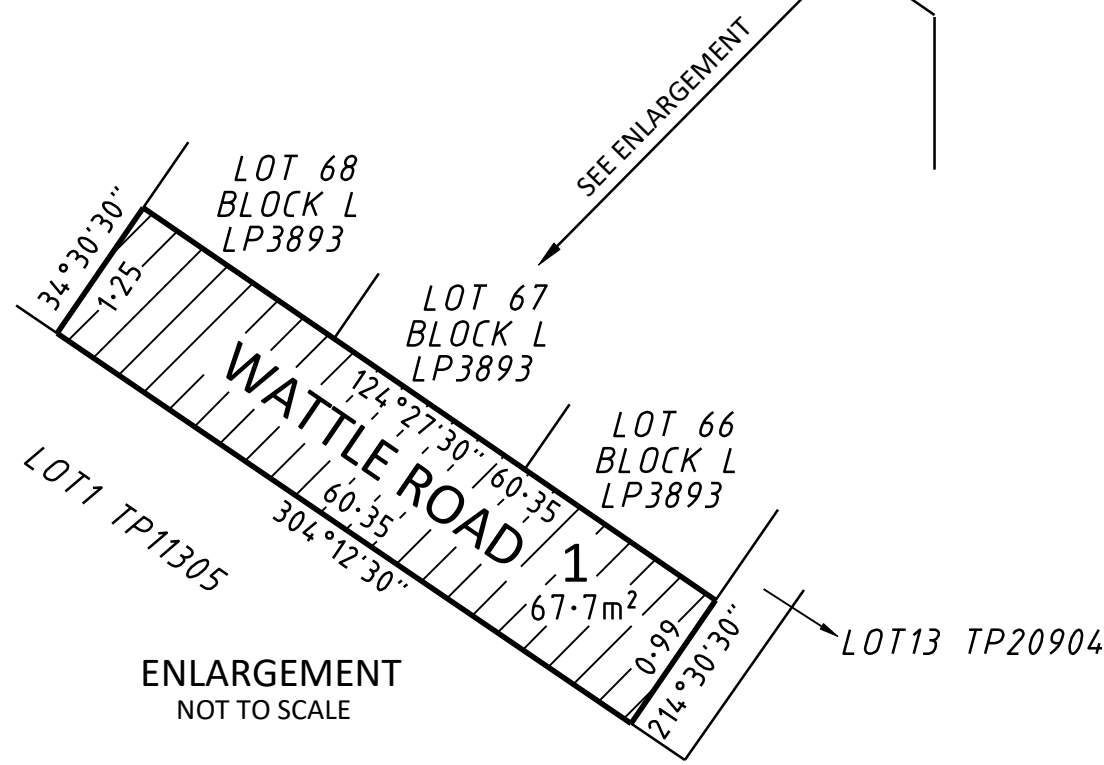
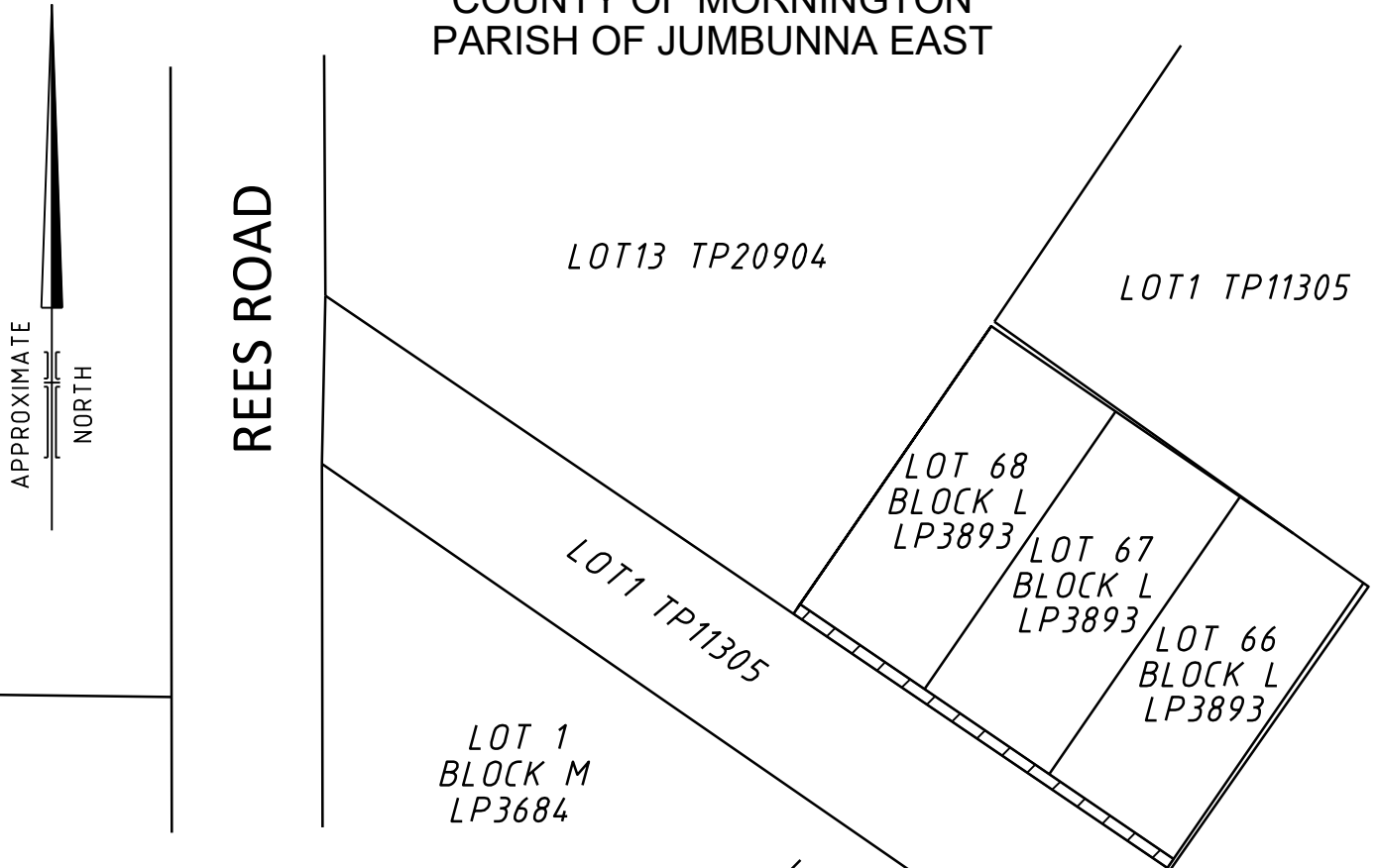
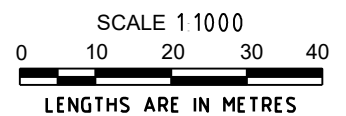
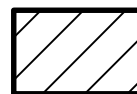


COUNTY OF MORNINGTON PARISH OF JUMBUNNA EAST



ENLARGEMENT
NOT TO SCALE

ROADS TO BE DISCONTINUED SHOWN HATCHED



Beveridge Williams
development & environment consultants
Leongatha ph : 03 5662 2630

DWG REF: 2001288 ROAD CL REFERENCE:2001288/B
South Gippsland Shire Council

PLAN OF ROAD DISCONTINUANCE
WATTLE ROAD
JUMBUNNA EAST
Council Meeting No. 466 - 15 December 2021

VERSION 2
10/3/2021

SOUTH GIPPSLAND
SHIRE COUNCIL