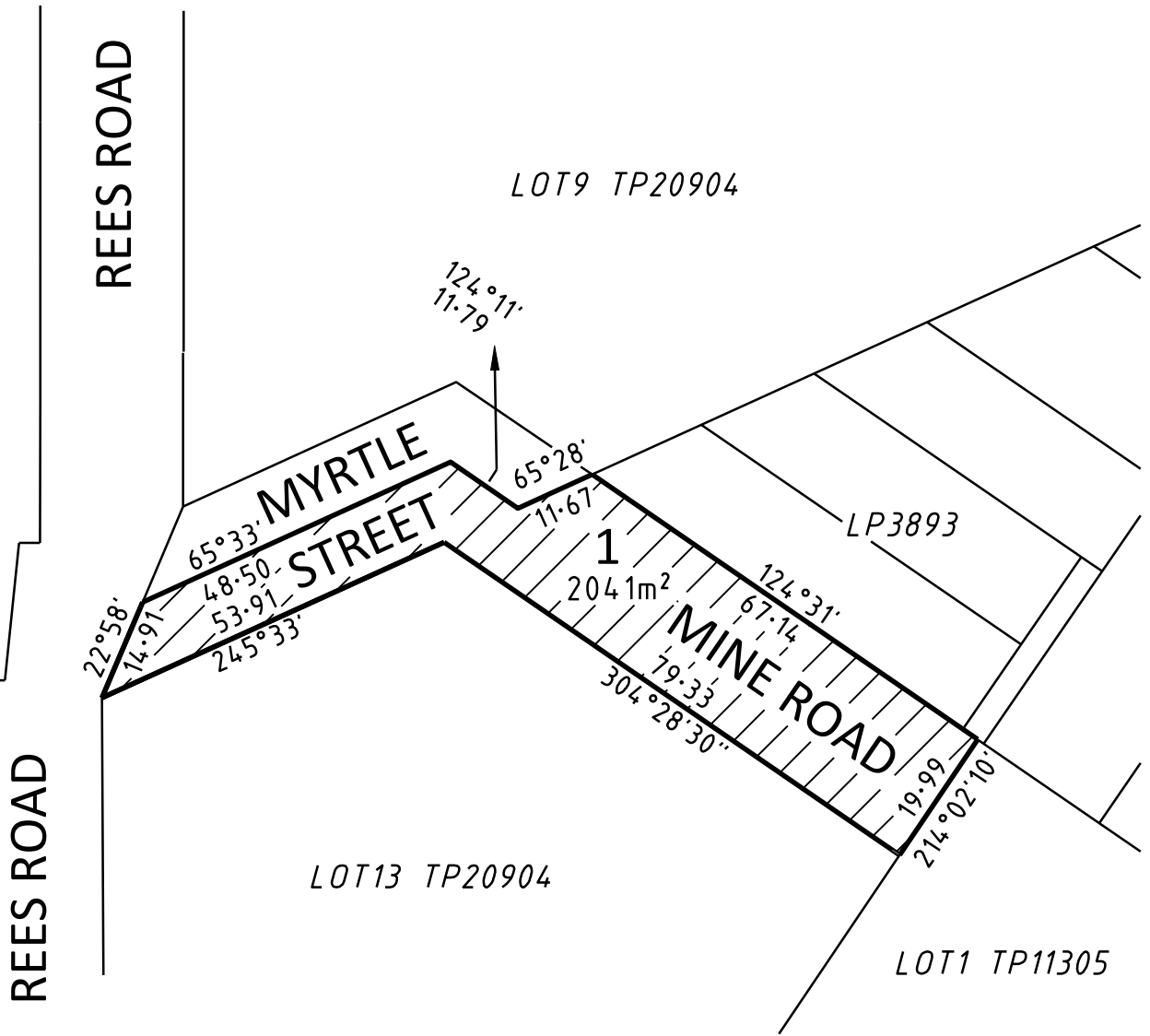
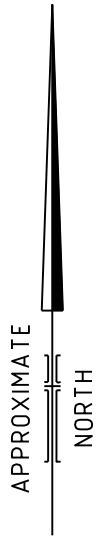
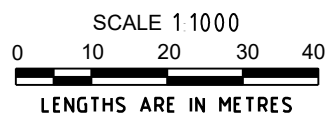
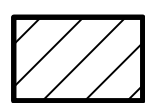


COUNTY OF MORNINGTON PARISH OF JUMBUNNA EAST



ROADS TO BE DISCONTINUED SHOWN HATCHED



Beveridge Williams
development & environment consultants
Leongatha ph : 03 5662 2630

DWG REF: 2001288 ROAD CL REFERENCE:2001288/A
South Gippsland Shire Council

PLAN OF ROAD DISCONTINUANCE
MYRTLE STREET
& MINE ROAD
JUMBUNNA EAST

Council Meeting No. 466 - 15 December 2021

VERSION 2
26/7/2021

SOUTH GIPPSLAND
SHIRE COUNCIL