

2021.06.02 – OPEN HEARING - COMMUNITY SUBMISSIONS

2021/2022 ANNUAL BUDGET - FINANCIAL PLAN – 1.00PM

ATTACHMENTS

2.1 Submissions Hearing – 2021/2022 Annual Budget and Financial Plan

Submissions with attending Presenters - click on blue item number to be taken to submission

- 2.1.1 **Presenting at 1.05pm** - Leongatha Lyric Theatre – Peter Western / Proposed Memorial Hall Redevelopment
- 2.1.2 **Presenting at 1.15pm** - Meeniyan Progress Association – Clive Hope / Solar Pathway Lighting – Great Southern Rail Trail / Recreation Reserve
- 2.1.3 **Presenting at 1.25pm** - Loch Community Development Association – Sean Taylor-Lyons – Loch Township / multiple upgrade requests
- 2.1.4 **Presenting at 1.35pm** - Poowong Community Consultative Committee – Lorraine Brunt / Poowong Township – Betula Drive footpath / carparking / swimming pool upgrade
- 2.1.5 **Presenting at 1.45pm** - Fish Creek Community Development Group – Craig Privett / Fish Creek Township – sewerage / traffic and carparking / black dump site
- 2.1.6 **Presenting at 1.55pm** - Manna Gum Community House – Rebecca Matthews / Youth Liaison Coordinator
- 2.1.7 **Presenting at 2.05pm** - Venus Bay Community Centre – Alyson Skinner / Support for Manna Gum Community House Submission (Youth Liaison Officer) / Tarwin River Precinct
- 2.1.8 **Presenting at 2.15pm** - Corner Inlet Youth Council – Dr Susan Plowright / Youth Liaison Officer
- 2.1.9 **Presenting at 2.25pm** - Walter J Tuck Recreation Reserve Community Asset Committee – Wayne Roberts / Replacement lighting for the Mirboo North Football Club
- 2.2.0 **Presenting at 2.35pm** - Bridget Crowe / Fitness Equipment in Fish Creek

Submissions

- 2.2.1 Rebecca Meadley / Road Sealing - Simons Lane, Leongatha
- 2.2.2 Di and Phil Cornwell / Small budget items
- 2.2.3 Tom Colahan / Appreciation - Korumburra Tennis Club
- 2.2.4 Paul Rotthier / Planning and Development – various matters
- 2.2.5 Nicole Dudman / Appreciation - Korumburra Tennis Club
- 2.2.6 Belinda Whiteside / Appreciation – Korumburra Tennis Club
- 2.2.7 Scott Simcock / Appreciation – Korumburra Tennis Club
- 2.2.8 Women in Gippsland / Place Names – Gender Equality
- 2.2.9 Frank Hirst / Appreciation – Korumburra Tennis Club
- 2.3.0 Elizabeth Hodge / Sealing – Dust Suppressant – Ross Street / Martins Road, Meeniyan
- 2.3.1 Korumburra Business Association / Commercial Street underground power – Pressure Cleaning – Footpath from Industrial Estate to CBD
- 2.3.2 Port Franklin Progress Association / Gravel Path Loop
- 2.3.3 Rebekah James / Bike Repair Stations – Great Southern Rail Trail
- 2.3.4 Vito Ferrone / Road Sealing – Henrys Road, Loch

LEONGATHA LYRIC THEATRE INC.

SUBMISSION TO SOUTH GIPPSLAND SHIRE COUNCIL DRAFT BUDGET

This submission to the draft budget addresses three items.

Firstly, appropriate funding to progress in a timely manner our proposal for the redevelopment of Leongatha Memorial Hall.

Secondly, two items in the budget pertaining to maintenance of the hall.

Thirdly, the structure and level of hiring charges for the hall

FUNDING:

As both Administrators and Shire staff are well aware of the redevelopment that Leongatha Lyric Theatre is proposing we will not canvass that here.

We are pleased that the project is mentioned more than once in the draft budget although only in general terms and with no outline of the steps required and with no specific funding allocation made.

Consequently we can only assume that the \$2.5 million allocated to “Leongatha Precinct” on page 50 will be the source of funds.

What we are seeking is assurance that the amounts allocated to the project provide enough flexibility to achieve a seamless progression through the development process as stages are completed.

Several of the major items listed below can and should be done concurrently. To do so not only progresses the project efficiently, it will also lead to an enhanced outcome for the community.

The Arts Strategy and Public Consultation are to a considerable degree similar processes. Both seek community input and Lyrics concept plans will inform both outcomes.

The Business Case and Architect Concept plan development also complement each other.

The Concept plan, of necessity, will include both the Engineering Assessment and an initial Cost Estimate.

Attachment 2.1.1

The Business Case will include information gleaned from the Concept Plans.

We submit that the draft budget includes enough funding to enable these four items to be completed within the life of that budget.

The major items to be addressed to bring the project to a contract and funding stage include the following.

ARTS STRATEGY INCLUSION:

Whilst there are items in the current strategy which address infrastructure, there is no specific mention of Performing Arts and its needs. The original committee concentrated largely on individual graphic artists with the notable omission of theatrical groups, choirs, bands, dance eisteddfods, recitals and concerts.

The review of the Arts Policy is, therefore a major priority, and should be commenced immediately and completed promptly.

COMMUNITY CONSULTATION.

Lyric Theatre has already done considerable work on this having consulted with many local community groups and received universal approval and encouragement for our proposal.

This work can provide a base for further wider consultation including more individual consultation as needed.

This activity can proceed in tandem with the Strategy work and would, in fact, complement it.

EXISTING CONDITIONS.

An early requirement is a comprehensive assessment of the existing building including an accurate plan of the whole complex and an assessment of the hall's structural integrity.

This is further noted later in our submission.

BUSINESS CASE.

Whilst Lyric, with Council assistance, commissioned a business case pertaining to Mesley Hall, much of which would equally apply to Memorial Hall, a much more wide ranging and detailed case will be required to enable funding applications to other spheres of government and also to industry, trusts and private funding sources .

CONCEPT PLANS.

As you are aware Lyric has developed initial concept plans.

These plans provide a concept which works spatially to create a very workable and practical Performing Arts Centre (PAC) at the same time as delivering a more flexible precinct providing benefits to all users.

These plans now require input and development by professional theatre architects to refine and further improve the concept ensuring a building which complies with all standards.

There is only a very small pool of architects with the experience and ability to deliver our desired result.

Accordingly, research into whom to appoint should be commenced promptly.

ENGINEERING ASSESSMENT.

A comprehensive engineering assessment of the whole building will be required early in the process, particularly of the balcony sub structure as well as general structural integrity.

We would anticipate this would be done in consultation with the appointed architects developing concept plans as the result of the survey could influence the resulting concept.

STATE GOVERNMENT APPROVAL.

As the hall is situated on Crown Land we assume there would be some requirement to obtain appropriate approvals from the relevant department.

As significant structural work has occurred in the past this should be a formality.

HERITAGE.

Memorial Hall is the preeminent heritage building in our Shire.

In the late 1990's a heritage study was completed over the whole shire.

This was conducted by a well known Melbourne Heritage architect, Mr David Helms, coincidentally a local from Stony Creek.

Lyrac has consulted with Mr Helms outlining our proposal and seeking his advice as to any heritage concerns it may raise.

His verbal opinion is that there would be no heritage conflicts in the concept we propose. He has also indicated he would be happy to provide advice as we proceed and to assist us with the project.

We do, however, see some opportunities to restore some important heritage features, particularly those pertaining to the "Memorial" areas as part of the process.

TIMING.

There is no appropriate PAC in our shire.

Leongatha is the logical, central and largest town, for such a facility.

Currently a number of events leave town to use the Wonthaggi facility. These include several dance and ballet concerts featuring our local young people, also Mary MacKillop College presents their musical each year in Wonthaggi.

The need is blindingly obvious - as one person said, "this is a no brainer", and the need is growing much more urgent.

Mesley Hall, where Lyrac has presented our shows for the past 56 years is becoming less available due to ever increasing enrolments at both the Primary and Secondary schools and their consequent increased use.

Our relationship with the College has been co-operative over all of that period and this continues now, but the school's needs must always come first.

The availability of the Hall for our exclusive over a five week period for our musicals is under severe pressure due to the needs of the schools

There is, therefore, a compelling case to progress this project as quickly as is possible.

Attachment 2.1.1

There is considerable scope for several of the early stages above to progress in tandem - they will even benefit from progressing together as they will each influence the outcomes of other research.

It is simply not logical to complete one task only to have to wait on the next year's budget to be able to proceed further.

Hence our request that there be enough flexibility in an overall budget allocation to allow seamless progress.

We rely on expert knowledge within the Shire to assess the allocation required - this is not our area of expertise, consequently we have not requested a particular amount to be included in the budget.

We can only emphasise the need to get on with it.

The most common reaction from community groups has been "why hasn't it happened sooner?"

We can only agree.

OTHER BUDGET ITEMS.

Two other items appearing on page 50 relate to Heritage Buildings.

Firstly the hall switchboard. \$20,000.

Clearly the whole electrical system will need re-evaluation and upgrading as part of a redevelopment.

Unless urgent safety issues are involved this item should be deferred pending the new design.

Secondly, exterior assessment. \$15,000

This work would automatically be part of the overall planning of the re-development.

These items would suggest a lack of communication between council departments and staff.

Attachment 2.1.1

These items, if reallocated to planning the project, would assist the seamless progress alluded to earlier as well as an overall saving of expense over time.

HALL HIRING CHARGES

On pages 65/66 the list of charges is remarkably complicated going for well over a page.

Two principles apply to this public building that should allow both organisations and private groups to use the hall.

First, charges should be set at a level that encourages greater use of the facility. This not only helps local community people, but should enable greater income through that wider use.

Second, the charges must be at a level benchmarked to similar facilities elsewhere.

Currently neither of these principles show any evidence of being addressed.

As mentioned earlier several potential hirers travel to Wonthaggi Arts Centre for their productions. This is a loss to our community.

Apart from the obvious disparity in the current quality of the two buildings these groups also find it cheaper to use Wonthaggi, even if more inconvenient..

It is all very well to set charges at a perceived commercial rate but if those charges discourage locals to use our own facility it is counterproductive.

A proper analysis of charges is required with the above principles foremost, particularly in the light of the proposed development.

The hall, after all, is a Public Hall not a business enterprise.

MEENIYAN PROGRESS ASSOCIATION INC
(ABN 14 319 869 471)

PO Box 83
Meeniyah
Vic 3956



16 May 2021

South Gippsland Shire Council
9 Smith Street
Leongatha 3953

Submission re Proposed Budget 2021/2022

Our Association seeks that there be included in the Capital Works Programme a provision for the cost of providing Solar Pathway lighting on the path to the Rail Trail and Rec Reserve on the northern side of Tompkins Road.

Previous requests to Council have been made for for lighting in or across Tompkins Road.

The first request in 2018 was for lighting in Tompkins Road.

A further request was made in 2019.

On 28 August 2020 a request was made for lighting of the pathway from the town to the Rec Reserve noting the regular use of the path.

Previously Council expressed concern that the footpath alongside the supermarket is on private land and wanted "to avoid having a pathway with lighting leading to an unlit carpark area."

Our Association has been advised that the supermarket proposes installing sensor lights on its building which will light the pathway in that section.

In these circumstances we submit that it would now be appropriate for provision to be made in the forthcoming budget for solar lighting of the short section of the path to the Rail Trail and the Rec Reserve.

Yours Faithfully,

Clive Hope
Secretary
Meeniyah Progress Association Inc



LOCH VILLAGE PROJECTS

Submission to South Gippsland Shire Council

Proposed inclusions in 2021-22 Budget

17 May 2021

Presented by Sean Taylor-Lyons

On behalf of the Loch Village Projects Working Group

a sub-committee of the Loch Community Development Association

About Loch Village

- Loch is a thriving, small rural village with capacity for growth in the future. A compact, 'garden village' with heritage character, tourism and retail facilities, set amongst the rolling hills of South Gippsland, an hour from Melbourne
- Loch is the gateway to South Gippsland
- Loch is an increasing tourist destination
- Loch has an active volunteer community, including the LCDA, Lions, Memorial Reserve and others involved in running events and raising funds that are put back into the community



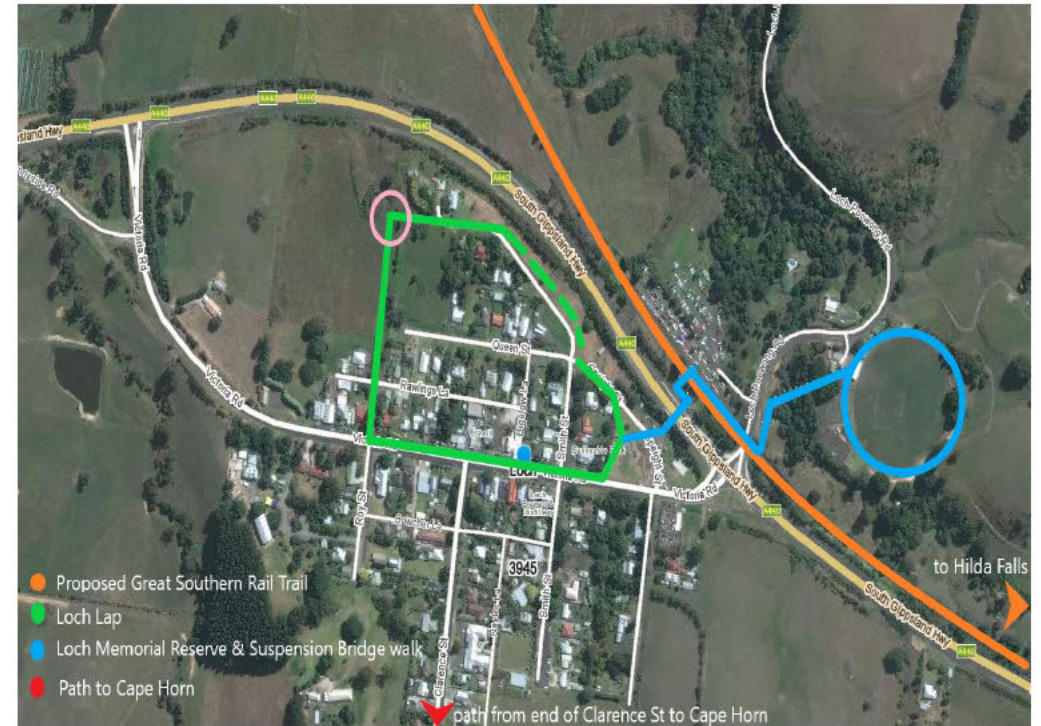
Loch Village Projects working group

- Loch Village Projects (LVP) working group was formed in 2019 as a sub-committee of the Loch Community Development Association
- To address areas of priority the Loch community believe will considerably enhance the livability of Loch and strengthen its position as the gateway to Prom Country
- LVP is currently made up of a dozen people from throughout the community
- Our vision is to maintain and enhance the atmosphere and character of Loch as a unique, historic and desirable garden village with a fabric of heritage buildings, renowned for its arts, craft, antiques and quality foods
- To develop an integrated network of shared pedestrian and bicycle paths linking features and facilities in and around the village
- LVP acts as the conduit to proactively engage Council, via LCDA and the working group, on behalf of the community



Priority Projects – Loch Lap

- Sections of the original Loch Lap proposal have been completed as part of Street Scape Phase 1 works.
- LVP proposes a shorter route than previously proposed (highlighted in green on map)
 - Victoria Rd – concreted/complete
 - Speight St – to be completed with gravel (200 metres)
 - From Smith St (near CFA nissen hut) to Albert Rd
 - Parks & Gardens dept have assisted in reclaiming this area, with regular mowing now occurring
 - Albert Rd - to be completed with gravel (125 metres)
 - From Speight St to Roy St
 - Could be excluded due to proximity to houses, with route running along existing road
 - Roy St - to be completed with gravel (170 metres)
 - From Albert Rd to Rawlings Lane
 - Culvert installed at Roy/Albert, arranged by Council's Technical Officer
- Email sent to various staff at Council in Aug 2020 to progress discussions relating to this project not responded to
- Total distance to complete Loch Lap: 495 metres
- Estimated costs: \$40k (excavation & gravel)
 - \$30k (370 metres) if Albert Rd path excluded



Priority Projects – Garden beds

- Following completion of Street Scape Phase 1, discussions held with Parks & Gardens department regarding installation of garden beds on newly created bump outs in Victoria Rd
- Located at Victoria/Smith and Victoria/Clarence intersections
- Utilisation of heritage bluestone pitchers lifted during Street Scape works to be used for edging (later advised these were included in the Street Scape contract and no longer available)
- Garden beds not constructed due to lack of budget
- Estimated costs: \$12k



Other Projects

We request Council's active input and support in devising an approach to address the following highly visible and underwhelming open spaces:

- **Highway entry garden – west end**
Garden and tree planting at the western entry point on the South Gippsland Highway that befits and underpins the garden village theme and first impression of Shire/Prom Country
- **Highway entry tree planting – east end**
Source and plant American stock of Plane trees, to mirror western-end Avenue of Honour planting

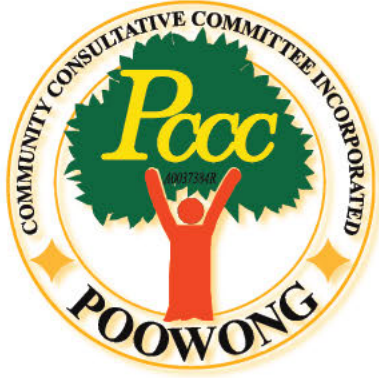


Conclusion

After a difficult year engaging and communicating with Council, The Loch Village Projects working group looks forward to a more productive working relationship with the South Gippsland Shire Council going forward.

LVP is enthusiastic to progress the various projects outlined in this submission, to further enhance this already beautiful village and to capitalise on Lochs tourism potential.





Poowong Community Consultative Committee Inc.

PO Box 9, Poowong, Victoria, 3988

15 May, 2021

Ms Kerryn Ellis
Chief Executive Officer
South Gippsland Shire Council
Private Bag 4
LEONGATHA. VIC. 3953

Email: submission@southgippsland.vic.gov.au

Re: Submission to Budget = Carpark area

Dear Kerryn,

We, the PCCC, ask that Council give due consideration to include in the Proposed 2021/2022 Budget the funds to upgrade and formalise the carpark at the front of 17-19 Ranceby Road, Poowong.

The carpark has drainage issues and no formal parking bays which results in limited and ad-hoc car parking. Between the potholes and raised drainage pits that drivers must avoid, or risk damage to their vehicles, parking spaces are often limited. The protruding drainage pits are also a trip hazard for shoppers.

The area needs to be formalised with a directional traffic flow to improve the safety of pedestrians using the footpath. This is a well used footpath by the Primary School's students.

We believe the area has serious OH&S issues that require urgent attention to mitigate the risks to our residents, shoppers and school children.

We request that Council allocate a time for the PCCC to present on this important issue through the 223 process.

Yours sincerely,

LORRAINE BRUNT
President

Attachment 2.1.4



Poor stormwater management at 17 Ranceby Road causes rainwater to course across the surface of walkways and driving areas.



Walkway to the shops' entrances is particularly bad during wet weather. maintenance at 17 Ranceby Road which has caused many problems and safety hazards.



Spilling stormwater is clearly evident making its way across walkway and driveway sections.



Cavernous potholes make access unsafe and unsightly.



The potholes are matched only by the ugliness of the protruding stormwater pits which are treacherous for vehicles.



Potholes are everywhere!

Attachment 2.1.4

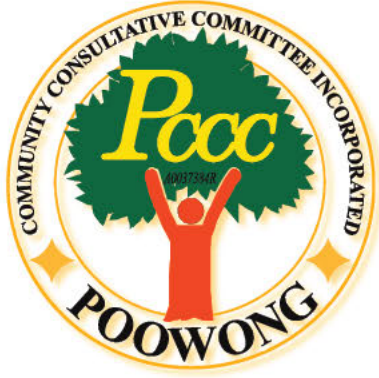


This pothole has been wearing for so long the clay has come to the surface of the stone.



This one is particularly treacherous and slippery when alighting a vehicle when there's nowhere else to park.





Poowong Community Consultative Committee Inc.

PO Box 9, Poowong, Victoria, 3988

17 May, 2021

Ms Kerryn Ellis
Chief Executive Officer
South Gippsland Shire Council
Private Bag 4
LEONGATHA. VIC. 3953

Email: submission@southgippsland.vic.gov.au

Re: Submission to Budget = Maintenance at Poowong Pool

Dear Kerryn,

We, the PCCC, ask that Council give due consideration to include in the Proposed 2021/2022 Budget the funds to upgrade the tiling on a portion of the Poowong Swimming Pool, at least in the area from the splash deck to the top.

While some maintenance was carried out on this project several years ago, it was far from a quality piece of workmanship. For safety reasons, we would like to have the matter of tiles falling off and other hazards explored prior to the 2021 swimming season.

A PCCC representative recently made phone contact with Ian Murphy regarding the construction of a storage shed at the swimming pool, as our committee has a reasonable amount of funds set aside for this project. It would be excellent if this matter could also be addressed in the "off season". The community sentiment at the time of the December 2013 celebrations for 50 Years of the Poowong Swimming Pool, was to use any profits to build suitable storage at the pool. Attending to this project would also allow PCCC to "tidy up our treasury".

We request that Council allocate a time for the PCCC to present on this important issue through the 223 process.

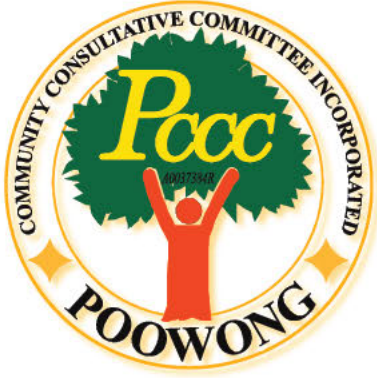
Yours sincerely,

LORRAINE BRUNT
President



The north-west corner of the swimming pool land, behind and beside the chemical shed, is an ideal site for the construction of a storage shed to cater for the needs and belongings of the Swimming Club, etc.





Poowong Community Consultative Committee Inc.

PO Box 9, Poowong, Victoria, 3988

17 May, 2021

Ms Kerryn Ellis
Chief Executive Officer
South Gippsland Shire Council
Private Bag 4
LEONGATHA. VIC. 3953

Email: submission@southgippsland.vic.gov.au

Re: Submission to Budget = Betula Drive Footpath

Dear Kerryn,

The PCCC of Poowong requests that Council funds an extension of the Drouin Road footpath west into Betula Drive to, at least, White Birch Close.

This footpath extension is essential for safety of pedestrians, particularly the many school children and families living in the estate.

Cars entering The Birches Estate are travelling uphill and are blinded by the afternoon sun. Pedestrians are forced to walk on the road surface.

After several complaints and near misses we the PCCC identify this as a serious safety hazard for pedestrians and drivers.

The sight distance for drivers is limited because of the uphill rise in the road and being blinded by the direct glare of the sun in the afternoon.

Poowong is built on main roads and many walkers use the estate roads for exercise and health and wellbeing.

Once the new development in Poowong, "The Oaks", is completed this extension will be essential for connectivity throughout Poowong.

I ask Council to please add this to this year's budget as this is a serious safety concern and an accident waiting to happen.

Yours sincerely,
LORRAINE BRUNT
President





School of Engineering/WETT Centre

Proposal for Fish Creek Community Development Group (FCCDG)

Prof. V (Jega) Jegatheesan & Dr. Maazuza Othman

May 2021

Background

Following our meeting with FCCDG on finding economic and ecofriendly solutions to sewage treatment and treated wastewater reuse/discharge, we would like to present this proposal.

There are two issues at play:

- 1) Lack of a system to manage sewage capacity, limiting economic growth.
- 2) Odour, linked to the sewage issue, onsite systems and effluent disposal.

These issues become prevalent whenever there is a large influx of visitors/tourists to Fish Creek on route to various destinations.

South Gippsland Water carried out investigations several years ago and the proposed solution are cost prohibitive.

Proposed Work

To produce workable solutions, the following needs to be carried out:

Investigate and review available data to identify source of odour as well as collect necessary data to map the existing onsite systems and identify their types and status. Review existing reports on the Fish Creek sewage treatment systems and their upgrade proposals as well as updated technologies available elsewhere.

Collaboration and consultation with South Gippsland water and the Council will be beneficial to provide feedback, obtain buy-in, build on previous data and if possible.

We propose the following two approaches:

Part A

Improve the performance of individual onsite systems as well as treatment system to treat the wastewater generated in the **main street**

Based on the working theory that the influx of visitors stretch existing treatment systems, primarily in the main street business area, a solution which focuses on the main street could immediately ameliorate a large part of the issues faced by Fish Creek.

Investigations could be conducted to improve the performance of individual onsite systems to improve the quality of water discharged to sewers and therefore reducing the odour. Also, collect wastewater generated by the premises located on the main street to find a suitable treatment and winter storage facility. This should reduce the costs from the cost proposed significantly. Our investigations will include solutions developed by local suppliers, being used or already trialled by similar towns in Australia with similar issues.

Part B

Staged construction of collection, reticulation, and treatment of wastewater

Investigate the feasibility of a staged, properly scaled approach to reduce the costs of implementing South Gippsland Water's proposed solution. For instance, constructing the treatment plant with a capacity to treat the wastewater generated currently (or in 2030) by the town. This will reduce the costs of both the treatment plant and the winter storage tank while allowing future expansions.

Outputs

A report will contain an analysis of the current situation, various alternative solutions to improve the performance of existing systems and installation of new systems (on new sites), estimated costs and recommendations.

Quotation

We propose a 6-month project at \$29,706 + GST for labour. Prof. Jegatheesan and Dr Othman's supervision time totalling \$22,165 will be provided in-kind.

Various funding sources such as council, businesses (main street), crowdfunding, tourism and grants that may be available to technology suppliers identified through this work.

Contact





Project 1 - Sewerage Infrastructure Research & Development

Part of the timeline

- 1977: Earlier attempts to get sewerage for town failed
- 2014: Feasibility study completed for a reticulated system
- 2017: COSTED @ \$55,000 TO \$400,000 PER HOUSE (25% TO 50% OF HOUSE VALUE)
- 2020: Post COVID Traffic TOURISM highlighted our issues further
- 2021: Town Hall meeting proved residents desire for sewerage
- 2021: Motion passed to ask state government for financial assistance
- 2021: Motion passed to ask help from RISE for health and support towards the project

NB ** Minutes/public documents available for all timeline info above

SUBMISSION OVERVIEW

Sewerage-affected wastewater running in **FISH CREEK'S** gutters and pooling in open areas and public spaces threatens the health of residents, tourists and the environment. It also jeopardises economic security and development.

Ageing septic systems have served the town for decades, but **FISH CREEK'S** growth as a tourist destination is putting pressure on an old infrastructure and compromising public health standards - you can smell it in the town! It's unpleasant for locals and a turn-off for visitors, who reasonably expect 21st-century health standards when they arrive to enjoy our beautiful area.

With state government investment in regional population growth and infrastructure, local businesses are looking to expand and thrive, offering jobs and prosperity into the future. Business growth in **FISH CREEK** is constrained by the limitations of septic

systems. Sewerage infrastructure would remove these disadvantages and allow **FISH CREEK** to flourish in the same fashion we have all witnessed neighbouring towns such as Meeniyan flourish in the last 10 years since they received sewerage.

We know connection costs are significant, but believe there's a strong case for government financial assistance. Safe wastewater treatment is essential basic infrastructure. There is precedent for affordable installation of sewerage in other Victorian regional towns and an argument for equity for **FISH CREEK**.

We need a sewerage system to protect public health, boost future economic security and safeguard our beautiful environment.

Please help us get sewerage for **FISH CREEK**

SUBMISSION BENEFITS

- 1. Public Health Secured:** Fish Creek residents and visitors are serviced by 1st world waste water management infrastructure.
- 2. Environmental Repair:** Waterways and surrounding ecosystems of Fish creek will regain a chance of recovery to support endangered species and fish.
- 3. Improved Tourist experience:** Tourists can choose more full-service venues to dine at and not smell sewage in the air while drinking a latte (!).
- 4. Increased Business Security:** allowing businesses to realise their full potential; offering increased services and employment opportunities.





Project 1 - Sewerage Infrastructure Research & Development

STRATEGIC ALIGNMENT

with

SGSC Proposed Budget 2021/22 Attachment 2.1.2

Section 1.3 - Strategic objectives

3 - Integrated Services and Infrastructure - to provide the community with services and infrastructure that enhance liveability and environment sustainability for the current and future generations. To establish a long term program for capital works, in conversation with the community.

Section 2.1 - Strategic Objective 1 - United Shire

1.3 - Deliver efficient and responsive services that enhance the health, safety and well-being of the community.

Section 2.1 - Strategic Objective 2 - Economic Prosperity

Build a Sustainable and growing economy that:

2.1 *Attracts and supports businesses to thrive and grow

*Broadens, builds and strengths industry sectors *Creates and sustains local employment opportunities.

2.2 - Develop plans that will balance and utilise the natural values of the environment, improve the shires liveability and build on the benefits of our proximity to Melbourne.

2.3 - Deliver services that support the growth of the local and regional economy.

Page 16 - Major Initiatives

CP2.1- Commence implementation of the 2021-2025 Economic Development and Visitor Economy Strategies by June 30 2022.

Section 2.3 - Strategic Objective 3 -

Integrated Services and Infrastructure

3.3 - Deliver services that enhance liveability and environmental sustainability for current and future generations.

Page 17 - Services

Infrastructure Planning + Infrastructure Delivery + Infrastructure Maintenance +

Section 2.4 - Strategic Objective 4 -

Customer Focused Organisation

4.3 - Provide meaningful and timely communication and quality customer service.

COMMITMENT SOUGHT

A **beginning-to-end commitment** to implement a **FISH CREEK** sewerage system to sustain the next 100 years of **FISH CREEK** community, ensuring the liveability of our awesome town so it can fulfil its true potential, addressing over the next 12 month budget at a minimum:

- a fully funded independent scientific assessment of the levels of pollution currently in Fish Creek.
- funding support to research and identify an affordable waste water management system/s that addresses the unique needs of Fish Creek.

FUNDING REQUEST

RMIT research assistant est cost for 6mths - **\$32,676.60 inc GST** see attached RMIT proposal TBA - as much as it takes to future proof this project.

PROJECT CHAMPIONS- FCCDG 2021

Statement of Purpose

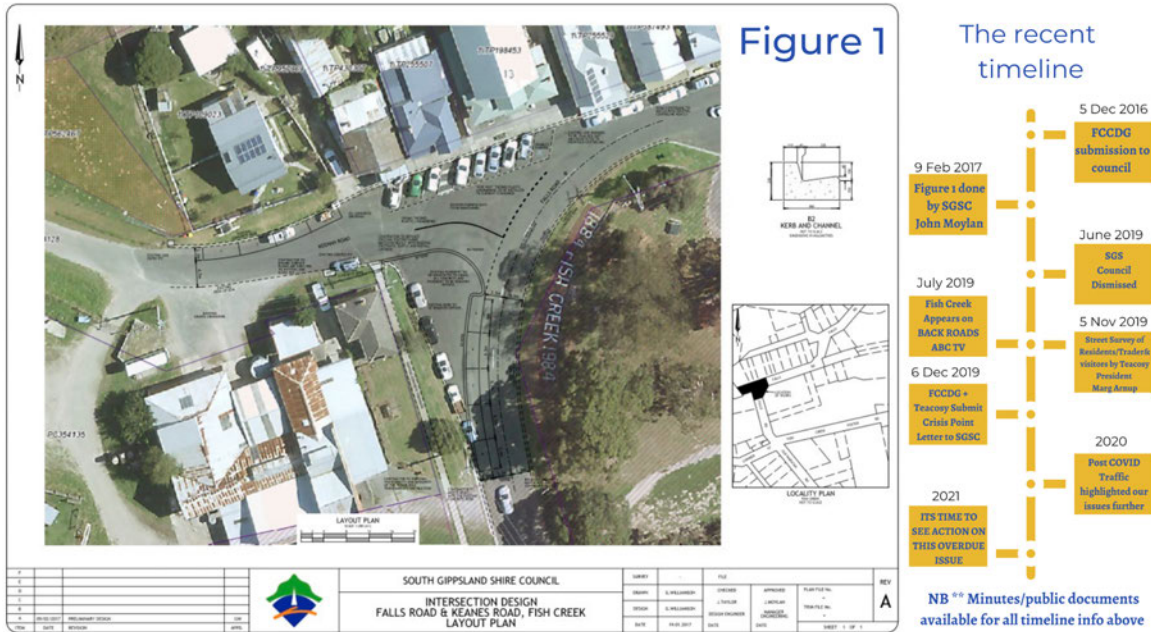
1. To undertake initiatives to develop and maintain facilities in the **FISH CREEK** area to service public needs.
2. To raise funds to assist in the development of projects.
3. To harness the community spirit within the **FISH CREEK** area for the public benefit.

It's about health, tourism, business security, our environment, liveability & pride of place





Project 2 - Traffic Management and Parking



SUBMISSION OVERVIEW

Feb 2021 FCCDG meeting highlighted Parking as the second most pressing issue for **FISH CREEK** residents.

Well before our town's exposure on the ABC TV show 'Back Roads' in July 2019, the general success of **FISH CREEK** as a destination forced action from our community to get the SGSC to design a plan for one intersection in **FISH CREEK** (see figure.1) drafted by council in 2017 though with no further action.

Our parking and traffic flow management has hit a point of immediate need and while the intersection plan in figure 1 still makes sense, the larger traffic flow management of the entire town

needs immediate focus to ensure the sustainable growth and liveability of our awesome town.

Our traffic management has been further highlighted as an immediate need because of the increased COVID era regional travel by Melbourne and Victorian tourists.

Even before COVID, **FISH CREEK** had too many days where all our parking would be full making it challenging for the 10,000's of tourists visiting the Prom and wider region to stop and enjoy our town and spend money here, as parking was just not available. It's also making it challenging for locals to shop in their own town on a weekend due to no car parks.

SUBMISSION BENEFITS

- 1. Public Safety Secured:** designated pedestrian crossing locations, safe and accessible parking for residents and Tourists
- 2. Economic Prosperity:** Increasing the volume of business activity - allowing businesses to maximise the seasonal tourists influx and offering increased and sustainable employment opportunities.
- 3. Liveability and Environmental Sustainability:** Re-designed flow of traffic will provide safer access to businesses and services and add to the enjoyment of our special town, without losing greenspace.
- 4. Improved Tourist experience:** Providing ample, well-signed car parking for the huge variety of vehicles our town attracts and services.





Project 2 - Traffic Management and Parking

STRATEGIC ALIGNMENT

with

SGSC Proposed Budget 2021/22 Attachment 2.1.2

Section 1.3 - Strategic objectives

3 - Integrated Services and Infrastructure - to provide the community with services and infrastructure that enhance liveability and environment sustainability for the current and future generations. To establish a long term program for capital works, in conversation with the community.

Section 2.1 - Strategic Objective 1 - United Shire

1.3 - Deliver efficient and responsive services that enhance the health, safety and well-being of the community.

Section 2.1 - Strategic Objective 2 - Economic Prosperity

Build a Sustainable and growing economy that:

- 2.1 *Attracts and supports businesses to thrive and grow *Broadens, builds and strengths industry sectors *Creates and sustains local employment opportunities.
- 2.2 - Develop plans that will balance and utilise the natural values of the environment, improve the shires liveability and build on the benefits of our proximity to Melbourne.
- 2.3 - Deliver services that support the growth of the local and regional economy.

Page 16 - Major Initiatives

CP2.1- Commence implementation of the 2021-2025 Economic Development and Visitor Economy Strategies by June 30 2022.

Section 2.3 - Strategic Objective 3 - Integrated Services and Infrastructure

3.3 - Deliver services that enhance liveability and environmental sustainability for current and future generations.

Page 17 - Services

Infrastructure Planning + Infrastructure Delivery + Infrastructure Maintenance +

Section 2.4 - Strategic Objective 4 - Customer Focused Organisation

4.3 - Provide meaningful and timely communication and quality customer service.

COMMITMENT SOUGHT

A **FULLY FUNDED** (beginning-to-end) project to implement a **FISH CREEK** traffic management solution to ensure the realignment of our continued growth, while not losing the liveability of **FISH CREEK**, addressing at a minimum:

- traffic movement
- pedestrian safety
- more parking bays for cars,
- clear parking options for tourist buses and caravans
- parking bays for trucks/tractors/horse floats
- bike parking and vehicle parking to service rail trail tourists in a service driven way.
- Additional accessible parking

FUNDING REQUEST

TBA - as much as it takes to future proof this project.

PROJECT CHAMPIONS- FCCDG 2021

Statement of Purpose

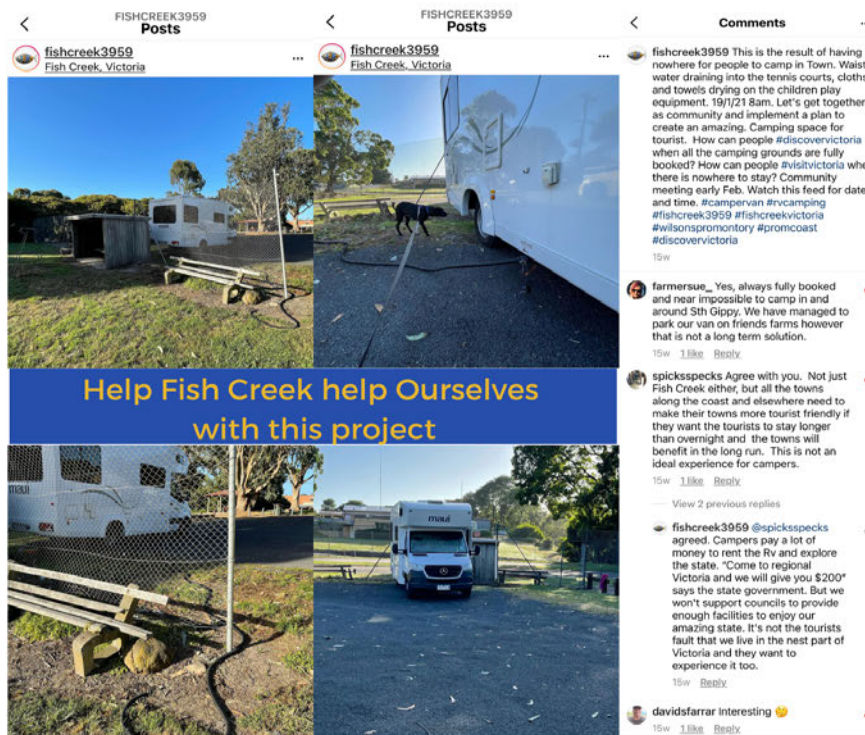
1. To undertake initiatives to develop and maintain facilities in the **FISH CREEK** area to service public needs.
2. To raise funds to assist in the development of projects.
3. To harness the community spirit within the **FISH CREEK** area for the public benefit.

It's about health, tourism, business security, our environment, liveability & pride of place

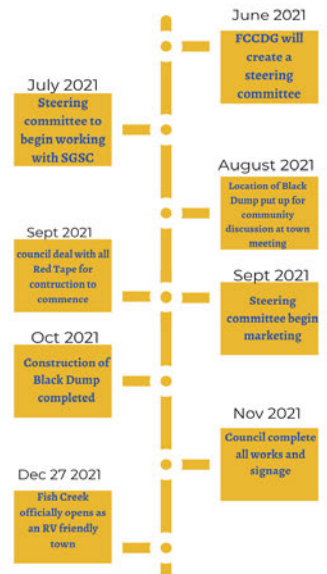




Project 3 - RV Black Dump



Projected Timeline



SUBMISSION OVERVIEW

FISH CREEK wishes to raise money to help with the long term needs of our community?

Project 1 - Sewerage Infrastructure Research & Development submission.

Without fail every week in summer (sometimes daily) we have vehicles camping in FISH CREEK anywhere they can find.

We won't stop this happening but we can certainly manage it better and generate money from it for our town to reinvest into its needs.

When we get to the pointy end of connecting homes to the sewerage system of FISH CREEK our community will be able to financially help those homes which have financial constraints on connecting to our sewerage infrastructure.

Given the sewerage infrastructure will take years to come into fruition (based on surrounding towns timelines for their sewerage system projects) we

can raise and invest money over those years to help our town residents connect.

Meeniyan already collects approx \$13k per annum for their RV donation system with the installed Black dump near their oval site.

FISH CREEK has potential to exceed that income by utilising the space around our oval from Dec 27th to Jan 31st for the first year. Project estimates show we can raise \$20K or more per annum just in these 6 weeks when the whole region has an accommodation and caravan camping sites shortage.

Fish Creek is well positioned to capitalise on the already increased traffic to the region PLUS the estimated 200,000 extra tourists coming to the prom due to the \$27 million Wilson Prom project.

FISH CREEK thanks Meeniyan for proving this model and helping us see a way to help ourselves.





Project 3 - RV Black Dump

SUBMISSION BENEFITS

- 1. Money:** cold hard cash for FISH CREEK to reinvest into our community needs.
- 2. Economic Prosperity:** Increasing the volume of business activity: allowing businesses to maximise the seasonal tourists influx and offering increased and sustainable employment opportunities.
- 3. Liveability and Environmental Sustainability:** removing random campers from all over town into a managed space with the required facilities.
- 4. Improved Tourist experience:** providing a low cost accommodation option for our visitors who may not be able to afford to stay in the region any other way.

STRATEGIC ALIGNMENT

with

SGSC Proposed Budget 2021/22 Attachment 2.1.2

Section 1.3 - Strategic objectives

3 - Integrated Services and Infrastructure - to provide the community with services and infrastructure that enhance liveability and environment sustainability for the current and future generations. To establish a long term program for capital works, in conversation with the community.

Section 2.1 - Strategic Objective 1 - United Shire

1.3 - Deliver efficient and responsive services that enhance the health, safety and well-being of the community.

Section 2.1 - Strategic Objective 2 - Economic Prosperity

Build a Sustainable and growing economy that:

2.1 *Attracts and supports businesses to thrive and grow *Broadens, builds and strengths industry sectors *Creates and sustains local employment opportunities.

2.2 - Develop plans that will balance and utilise the natural values of the environment, improve the shires liveability and build on the benefits of our proximity to Melbourne.

2.3 - Deliver services that support the growth of the local and regional economy.

Page 16 - Major Initiatives

CP2.1- Commence implementation of the 2021-2025 Economic Development and Visitor Economy Strategies by June 30 2022.

Section 2.3 - Strategic Objective 3 -

Integrated Services and Infrastructure

3.3 - Deliver services that enhance liveability and environmental sustainability for current and future generations.

Page 17 - Services

Infrastructure Planning + Infrastructure Delivery + Infrastructure Maintenance +

Section 2.4 - Strategic Objective 4 -

Customer Focused Organisation

4.3 - Provide meaningful and timely communication and quality customer service

COMMITMENT SOUGHT

A **FULLY FUNDED** (beginning to end) project to implement a **FISH CREEK** RV Black Dump site addressing at a minimum:

- Planning and design
- Build and install
- Relevant signage in the Region and the town itself
- Marketing of finalised project

FUNDING REQUEST

TBA - as much as it takes to future proof this project.

PROJECT CHAMPIONS- FCCDG 2021

Statement of Purpose

- To undertake initiatives to develop and maintain facilities in the **FISH CREEK** area to service public needs.
- To raise funds to assist in the development of projects.
- To harness the community spirit within the **FISH CREEK** area for the public benefit.





33 Station Road, Foster VIC 3960
PO Box 176 Foster VIC 3960



17 May 2021

Chief Executive Officer,
South Gippsland Shire Council,

(submitted via email: submission@southgippsland.vic.gov.au)

Submission regarding South Gippsland Shire Council Proposed Budget 2021/22 from Rebecca Matthews, Manna Gum Community House, Foster.

Submitted as a companion submission to Sue Plowright's submission as we worked in partnership to develop an agreed recommendation.

Endorsed by Venus Bay Community Centre, Milpara Community House and Leongatha Community House.

Our work

Manna Gum Community House is part of a network of four Neighbourhood Houses across the South Gippsland Shire. The purpose of the Manna Gum Community House is to strengthen the Foster and Corner Inlet community by providing a welcoming place to find information and support. Our primary drivers are: Education - We provide local and relevant community education to support lifelong learning. Social inclusion - We are committed to encouraging community participation in all our activities and reducing social isolation. Sustainability - We are committed to sustainable practice in all our activities.

Manna Gum responds to the needs of the local community through a community development process. Our work often enhances and supports the work of Council and we collaborate on a regular basis including our annual NAIDOC Week celebrations and two Pamper Day events to support the mental health of farming families after the Dairy Downturn. We also host the Council Supported Playgroup on Thursday mornings

Our range of services includes a Centrelink and Medicare Agency that operates two days a week, and an Emergency Relief Doorways service which is funded by the Salvation Army.

Our youth engagement

Manna Gum has actively engaged with young people by obtaining grants to host youth specific programs. These include the Memory Lane Youth Art Project (National Youth Week 2016); the Youth Engagement Project to develop innovative, new education programs to support pathways to further education and employment (2017-2018 Department of Education funded); Foster Skate Park Paintup Event (Victorian Youth Week 2018); Step Up Event (Victorian Youth Week 2019/ABC Heywire funded) and in 2020 we launched the 'Our Place' youth group.

'Our Place' is a weekly youth space on Mondays after school at Manna Gum. A meal is provided, along with activities and free Wifi. Transport home is available to participants living outside of Foster. The program is supported by an ABC Heywire Youth Innovation Grant and was an initiative of young people at the annual Youth Heywire Summit. They identified that rural and remote towns in Australia can lack safe, free and practical spaces for young people to hang out. This idea also resonated with local youth services and schools in Foster as an identified need in our area, and further supported by the success of the Corner Inlet Youth Council group established in Toora.

The 'Our Place' youth group launched in February 2020. Despite significant interruption with COVID lockdowns, the program had 115 unique visits between February 2020 and May 2021. Between 4-9 young people attend each week. We have successfully obtained additional funding to run the program until the end of 2021, with the aim to sustain it into the future while it remains an effective support for young people in our local area. This is an ongoing challenge for programs that do not have consistent funding and rely on grants, sponsorship and in-kind contributions.

Our recommendation

In order to ensure all the Shire's young people feel valued, respected and supported in their social and emotional development, add an item as CP1.5 under Services-Major initiatives to read:

CP1.5 employ an Effective Full Time on going Youth Liaison Coordinator at the appropriate level by 31 December 2021 to:

- liaise between and support existing youth groups and youth initiatives across the shire;
- cultivate new youth groups, projects and events;
- support young people in turn to contribute to the civic, social and economic life of the shire; and
- implement South Gippsland Shire Council's Youth Strategy 2019-2023.

Our concerns and reasoning

We commend the work of the Community Strengthening Team at South Gippsland Shire Council and the delivery of the L2P Program and the FReeZA program. We also recognise the importance of the South Gippsland Youth Council and the work currently underway to reestablish the Youth Council post-COVID.

Our understanding is that the above activities are coordinated by staff members that have a range of other work commitments in their department. The needs of young people require greater investment to fully realise the vision of the South Gippsland Shire Council Youth Strategy 2019-2023 and provide tangible results. The employment of an EFT Youth Liaison Coordinator would provide a more solid base of support for young people in South Gippsland by strengthening partnerships between youth services, advocating for young people and helping them to participate in local government policy and decision making and connecting them to culture and community. It would acknowledge the importance of the needs of young people in our community.

Right now, it is more important than ever to support our young people. The Gippsland Primary Health Network lists Young People (12-25 years) as one of their health priority areas for 2019-2022, with Community Connectedness listed as a top preventative health measure.¹

Every aspect of how the 1.2 million young people (12-25) in Victoria live, learn and work has been transformed by COVID 19 and its economic and social impacts.² The Foundation for Young Australians argues that the effect of COVID 19 will “continue to be felt by young people in the decade to come.”³ The pandemic has affected people of all ages across the globe, however young people have been disproportionately impacted. They were already experiencing generational inequality, and they were more than twice as likely to have experienced job loss during COVID 19 when compared to other age groups.⁴ Due to the fact that young people are more likely to have casual work, they were less likely to be eligible for JobKeeper. They have also experienced disruption with their education and their mental health was negatively impacted. We need a strong youth sector to help young people through a post COVID 19 recovery, and a whole of government response.

Our staff at Manna Gum Community House are on the frontline working with youth in crisis through our Emergency Relief Doorways Service and related wrap around support (education pathways support, referrals to other services). Youth homelessness is an issue across the state,

¹<https://www.gphn.org.au/populationhealthplanning/assessment/>

² Australian Bureau of Statistics (ABS) 2019.

³ Foundation for Young Australian + YLab *Centring young people's in Victoria's future* (2020) p.2

⁴ Youth Affairs Council of Victoria *A COVID-19 Recovery Plan for Young People* (2020) p.4

with 26% of the people experiencing homelessness in Victoria aged between 12 and 24.⁵ South Gippsland is no exception. We have serviced four clients aged under 18 in crisis in the past six months who have all been subject to a family breakdown and are homeless and couch surfing as a result. There is no provision of youth-specific crisis housing in South Gippsland and in order for our clients to remain connected to their schools they stay with friends, and are at risk of disengaging from education and a deterioration in mental health.

When we listen to our young people and support them, the whole community benefits. As stated in the South Gippsland Youth Policy 'The future wellbeing of the community is assisted by retaining and attracting young people to the district, and by encouraging young people to feel valued as community members.'⁶

I would be happy to discuss or expand on any of my comments and can be contacted on [REDACTED]

Yours sincerely,

[REDACTED]

Rebecca Matthews
Manager, Manna Gum Community House

⁵ Youth Affairs Council of Victoria *Ending Youth Homelessness: Solutions from Young People* (2020) p.4

⁶ C46 *South Gippsland Youth Policy, 2017-2021*

OUR PLACE youth group



Anti clockwise from top:
Bonfire night
A visit from the Foster Country
Fire Authority
Banner painting
Table tennis



Attachment 2.1.7

17 May 2021

To whom it may concern.

South Gippsland Shire Council proposed budget 2021

The Venus Bay community Centre fully endorses the submission by Manna Gum Community House to the 2021 proposed council budget. The issues identified by Manna Gum CH are shared by Venus Bay Community Centre and we firmly support an increase in Shire resources to implement the Youth Strategy in partnership with existing agencies/stakeholders who are currently on the front line of issues faced by our young people.

The Venus Bay Community Centre exists to serve the communities of Venus Bay, Tarwin Lower and Walkerville and provides a range of programs, activities, events and services identified for and with our community; we have become a well loved and respected community hub; somewhere to meet others, find out about what is happening in the area, and a place to be. The Centre is able to support the community in areas such as community development, strengthening, planning and advocacy and a range of events and programs for the district of Venus Bay, Tarwin Lower and Walkerville. We aim to be inclusive and responsive to the community we represent. Our strategic aims are to:

1. Publish reliable and useful information for the community
2. Generate and support programs and activities for all age groups that connect people and expand their knowledge, imagination, curiosity, skills and experience.
3. Offer services that meet expressed community needs.
4. Strive towards a sustainable community through energy saving, recycling and local food production.
5. Arrange, promote and engage in community discussions about matters that affect the future well-being of the district.
6. Maintain and improve the building and grounds as a safe place for the community.
7. Partner with other organisations and agencies on initiatives designed to strengthen the community.
8. Review and refine our internal processes and policies.
9. Support and value our volunteers and staff.

Further to the Manna Gum Community House submission, the Venus Bay Community Centre would like to add the following:

Attachment 2.1.7

The communities of Venus Bay and Tarwin Lower are expanding and growing at an unprecedented rate which presents challenges for infrastructure and services to keep pace. Acknowledging the work of strategic planning by the community and allocating funds to support future projects would be a sensible approach – acknowledging community concerns, the work already undertaken to develop strategic visions and shared solutions.

We commend the Venus Bay Activity Centre funding in the budget and ask this project is achieved in a timely manner. We would ask the council to consider the [Tarwin River Precinct](#) strategic document and consider allocating funding to identified projects in this plan – particularly around parking, shared roads and increased traffic in Tarwin Lower (see link)

The Venus Bay Community Centre would appreciate the opportunity to present to council on the proposed budget.

Kind regards,
Alyson Skinner,
Manager, Venus Bay Community Centre Inc.

17 May 2021

Chief Executive Officer,
South Gippsland Shire Council,
Private Bag 4, Leongatha VIC 3953

Submitted via email: submission@southgippsland.vic.gov.au

Submission regarding South Gippsland Shire Council Proposed Budget 2021/22 from Sue Plowright, Elissa Jackson and Trevor Mack, co-organisers of Corner Inlet Youth Council.

Submitted as a companion submission to the Manna Gum Community House submission as we worked in partnership to develop an agreed recommendation.

Background of Corner Inlet Youth Council/Group

The group began with eight young people and co-founders Emma Avery and Sue Plowright in late 2018. Currently there are 23 active young people — some regular some semi regular due to sport, work and other commitments. On average, around 13-14 attend any one session/activity although a recent excursion to Laser Tag in Leongatha saw 19 climb aboard the bus (see photo in attachment). The members are 12-16 years of age, most attend Foster Secondary College, but some attend Leongatha schools, one attends Yarram Secondary College and several are home schooled.

The group is run on a volunteer basis, now by Elissa Jackson, Trevor Mack and Sue Plowright. The group is very well supported by the local community. We acknowledge the support of South Gippsland Shire Council in providing funds for snacks and some meals such as BBQs or pancake nights, and funds buses for excursions. The Toora RSL very generously allows the group to use their hall most weeks and the Toora Lions Club has supported a recent excursion to reduce the costs to each child. The group receives in kind and other support from local businesses and the primary school.

Activities have included weeding someone's garden, helping the Toora Primary School colour run fundraiser, excursions, in house movie nights and pre covid, blue light discos (junior and senior) and Halloween dances. See photos attached.

Value and importance of the group

The pre-teen and teen years are a crucial time in the development of social and emotional skills. Young people need increased opportunities for independence, but still need support and guidance from responsible adults.

With this in mind, the Corner Inlet Youth Group runs on a “positive youth development” philosophy which is a:

focus on building young people’s positive personal competencies, social skills, and attitudes (i.e., asset development) through increased positive relationships, social supports, and opportunities that strengthen assets and help youth flourish within their environments.¹

The “assets” they refer to are self-control, interpersonal skills, problem solving, quality of peer and adult relationships, commitment to schooling, and academic achievement.

In rural areas, especially in smaller towns and locales, there are limited opportunities for young people to have independent social activities due to lack of transport and local youth focussed activities. The Corner Inlet Youth Group attempts to provide these supports and an expanded range of adult role models.

The number of young people the group caters for in just the Toora and district area, demonstrates a need for social activities that focus on the strengths and abilities of young people, to complement services such as the Youth Assist Clinic at Foster which provides an excellent service for addressing adolescent problems and the youth programs run by Manna Gum Community House. All are necessary supports for the young people of the area.

Recommendation

In order to ensure all the Shire's young people feel valued, respected and supported in their social and emotional development, add an item as CP1.5 under Services-Major initiatives to read:

CP1.5 employ an Effective Full Time on-going Youth Liaison Coordinator at the appropriate level by 31 December 2021 to:

- liaise between and support existing youth groups and youth initiatives across the shire;
- cultivate new youth groups, projects and events;
- support young people in turn to contribute to the civic, social and economic life of the shire; and
- implement South Gippsland Shire Council's Youth Strategy 2019-2023.

Rationale

Each individual youth initiative across the Shire is valuable but could be considerably enhanced through a Youth Liaison Coordinator who, among other roles, facilitates a shire wide youth providers network (see for example Wellington Shire Youth Services Network²) to broker and build partnerships and shared activities, such as events and funding submissions. The capacity of volunteers, such as the authors of this submission, and community workers on short term funded

¹ https://dpi.wi.gov/sites/default/files/imce/sspwp/pdf/Taylor_et_al_-_FINAL_document_6_17_2017_2.pdf

² <https://www.wellington.vic.gov.au/community/youth>

Attachment 2.1.8

projects, to conduct this sort of liaison role is very limited so the potential of a liaison coordinators role to value add to existing initiatives is potentially transformative.

We note the proposed budget specifically mentions youth in two places. One on page 13 in brackets relating to the Youth Leadership Program and item 4.1.4 Grants: Youth Development \$64,000.

The above recommendation supports and further enhances the youth leadership and youth development initiatives identified and helps address the following:

- South Gippsland Shire Council Strategic Objective 1. United Shire: To establish a shared long term community direction that unites the Shire and guides its future direction. **To provide services that are accessible and support the various sectors of the community**
- United Shire strategies including in particular:
 - 1.2 Develop and support the leadership skills of existing and emerging community leaders, volunteers, community groups and networks.

We also note all Victorian Councils are required every four years to prepare and submit a Municipal public health and wellbeing plan. We submit that a dedicated Youth Liaison Coordinator would place South Gippsland Shire Council well in terms of demonstrating a targeted focus on the health and well-being needs of the youth sector of the South Gippsland community.

Thank you for considering our submission. We would be happy to discuss or expand on any of our comments. We agree to this submission being made public if signatures and photos are redacted.

Sue Plowright

Elissa Jackson

Trevor Mack

Contact:

Dr Susan Plowright 

Attachment: photo collage

17 May 2021

Chief Executive Officer,
South Gippsland Shire Council,
Private Bag 4, Leongatha VIC 3931

Submitted via email: submissions@southgippsland.vic.gov.au

Submissions regarding South Gippsland Shire Council Proposed Budget 2021/22 from Sue Pivwright, Elissa Jackson and Trevor Mack, co-organisers of Career Inlet Youth Council. Submitted as a companion submission to the Manna Ginn Community House submissions as we worked in partnership to develop an agreed recommendation.

Background of Career Inlet Youth Council Group

The group began with eight young people and co-founders Elissa Avey and Sue Pivwright in 2018. Currently there are 21 active young people — some regular some semi regular — at our, work and other care activities. On average, around 15-14 attend any one activity (through a recent expansion to Larer). The Leongatha area 19 clubs around the bay (see photo in submissions). The members are 12-16 years of age: most attend Francis Secondary College, but we attend Leongatha schools, one attends Yarran Secondary College and several are home

group is run on a volunteer basis, now by Elissa Jackson, Trevor Mack and Sue Pivwright. The group is well supported by the local community. We acknowledge the support of South Gippsland Shire Council in providing funds for snacks and some meals such as BBQs or picnics and funds for the Leongatha Youth Centre. The Leongatha RSL very generously allows the group to meet weekly and the Leongatha Lions Club has supported a recent excursion to reduce the cost to each child. The group receives in kind and other support from local businesses and the

we have included wedding someone's garden, helping the Leongatha Primary School collect Easter, excursions, in house movie nights and pre-formal, blue light discos (junior and Halloween discos. See photos attached.

Importance of the group

Over the last year we have seen a crucial time in the development of social and emotional skills, and young people are a crucial time in the development of social and emotional skills. We need to ensure opportunities for independence, but still need support and guidance where possible adults.

With this in mind, the Career Inlet Youth Group runs on a "positive youth development" philosophy which is a

focus on building young people's positive personal competencies, social skills, and attitudes (i.e., asset development) through increased positive relationships, social supports, and opportunities that strengthen assets and help youth flourish within their environments.

The "assets" they refer to are self-control, interpersonal skills, problem solving, quality of peer and adult relationships, commitment to schooling, and academic achievement.

In rural areas, especially in smaller towns and localities, there are limited opportunities for young people to have independent social activities due to lack of transport and local youth focused activities. The Career Inlet Youth Group attempts to provide these supports and an expanded range of adult role models.

The number of young people the group caters for is just the Toora and district area, demonstrates a need for a service for young people, to complement services such as the Youth Aid Clinic at Foster which is a specialist service for addressing adolescent problems and the youth programs run by Manna Ginn Community House. All are necessary supports for the young people of the area.

Recommendations

In order to ensure all the Shire's young people feel valued, respected and supported in their social and emotional development, add an item as CP1.5 under Services-Major initiatives to read: CP1.5 employ an Effective Full Time on-going Youth Liaison Coordinator at the appropriate level by 31 December 2021 to:

- foster between and support existing youth groups and youth initiatives across the shire;
- support young people in turn to contribute to the civic, social and economic life of the shire; and
- implement South Gippsland Shire Council's Youth Strategy 2019-2023.

Rationale

Each individual youth initiative across the Shire is valuable but could be considerably enhanced through a Youth Liaison Coordinator role, among other roles. Facilitates a shire wide youth providers network (see for example the Leongatha Youth Services Network). To foster and build partnerships and shared activities, such as events and funding submissions. The capacity of volunteers, such as the authors of this submission, and community workers on short term funded

¹ https://files.wa.gov.au/files/department/infrastructure/infrastructure_documents/infrastructure_documents_6_12_2017_2.pdf
² <https://www.wellington.vic.gov.au/community/youth>

projects, to consider this role of liaison role is very limited as the potential of a liaison coordinator role to make a difference to existing initiatives is potentially transformative.

We note the proposed budget specifically mentions youth in two places. One on page 13 in brackets relating to the Youth Leadership Program and Item 4.1.4 Grants: Youth Development \$64,000.

The above recommendations supports and further enhances the youth leadership and youth development initiatives identified and helps address the following:

- o South Gippsland Shire Council Strategic Objective 1: United Shire. To establish a shared long term community direction that unites the Shire and defines its future direction. To provide services that are accessible and support the various sectors of the community.

- o United Shire strategies including in particular:

1.2 Develop and support the leadership skills of existing and emerging community leaders, volunteers, community groups and networks.

We also note all Victorian Councils are required every four years to prepare and submit a strategic public, health and wellbeing plan. We submit that a dedicated Youth Liaison Coordinator would place South Gippsland Shire Council well in terms of Councils targeted focus on the health and well-being needs of the youth sector of the South Gippsland community.

Thank you for considering our submission. We would be happy to discuss or expand on any of our comments. We agree to this submission being made public, if signatures and photos are reduced.

Contact:
Dr Susan Pivwright 0412685736 sue@southgippsland.vic.gov.au

Attachment: photo collage

Attachment 2.1.9

From: [REDACTED]
To: [Council](#)
Cc: [REDACTED]
Subject: ATT: To the CEO Kerryn Ellis
Date: Thursday, 13 May 2021 9:21:56 PM
Attachments: [MNFNC Football Ground Lighting - WJTR CAC Feb 2021.pdf](#)
[Letter to SGSC March 2021 re submission for lighting replacement on behalf of MNFNC.docx](#)

To the Attention of the South Gippsland Shire Council CEO, Kerryn Ellis,

The Community Asset Committee of the Walter J Tuck Recreation Reserve would like to highlight the proposal for the replacement of the lighting on our top oval.

Our C.A.C would greatly appreciate if the proposal for the replacement of the lighting of the top oval at our Reserve be greatly considered within the 2021-22 budget. We understand that many projects have been earmarked for approval within this coming year's budget, however we urge you to re-examine the proposal submitted.

If the SGSC do not deem this project viable for the 2021-2022 year, we strongly advocate for the beginnings of procedures for the project to be commenced, where soil tests and any other relevant tests (STCA) be carried out in the meantime to prepare the site for the inclusion of the project in the 2022-23 budget.

Kind regards,

Rachael Vansittart

Secretary
Community Asset Committee
Walter J Tuck Recreation Reserve
Mirboo North



**Walter J Tuck Recreation Reserve
Community Asset Committee
P.O. Box 2
Mirboo North 3871**

Thursday 18th March, 2021

To the CEO, Mrs Kerryn Ellis,

RE: Replacement of the Walter J Tuck Main Oval Lighting through the Community Sports Lighting Stream.

The Walter J Tuck Recreation Reserve Community Asset Committee (CAC) would like to submit a proposal on behalf of the Mirboo North Football Netball Club (MNFNC) for the replacement of the Main Oval Lighting at our Reserve. We ask that South Gippsland Shire Council please consider submitting an application to the Victorian State Government's 2021 Local Sports Infrastructure Fund to obtain the monies to undergo such a project.

This project is driven by the MNFNC and is supported in full by the Walter J Tuck Recreation Reserve CAC.

Currently, the Main Oval's Lighting at the Walter J Tuck Recreation Reserve is operating at sub-standard levels and has a significant impact on the oval's capacity to host winter training sessions for all age groups within the MNFNC. This includes: U9s, U11s, U13s, U15s, Youth Girls, U18s, Reserves and Senior Australian Rules Football Teams. This limitation of the Lighting in it's current state will have a large impact on these team's being able to train throughout the Winter months.

In addition, the Main Oval of the Reserve is also used as an Air Ambulance landing pad/area. These Ambulance Helicopters require a safe landing to enable a critical transfer of injured and critically ill patients during an emergency. Moving forward, the current Lighting capacity will not be able to support this emergency service to a satisfactory degree.

Community Groups would also benefit having the opportunity to hire the Main Oval all year round. This would include Twilight and Night Events during various seasons. Currently this is not plausible due to the sub-standard level of Lighting currently offered.

The CAC will endeavour to work with the SGSC closely to generate a positive outcome for our Walter J Tuck Recreation Reserve Main Oval usage.

Please find attached a letter from the MNFNC, as well as their supporting documentation.

Kind regards,

Wayne Roberts

Chairperson

Walter J Tuck Recreation Reserve Community Asset Committee



Attachment 2.1.9

Mirboo North Football Netball Club Inc.

Walter J. Tuck Recreation Reserve
Strzelecki Highway

PO Box 44 Mirboo North, Victoria, 3871

Walter J Tuck Recreation Reserve
Committee of Management
P.O. Box 2
Mirboo North 3871

Dear Wayne

The Mirboo North Football North Club (MNFNC) request that the Walter J Tuck Reserve's (WJTR) Community Asset Committee approach, as a priority, the South Gippsland Shire Council (SGSC) to seek funding for the replacement of the Walter J Tuck main oval lighting.

The Victorian State Government's 2021 Local Sports Infrastructure Fund is a state-wide competitive Victorian Government program that is providing a range of grant opportunities across five funding streams. The above mentioned project falls under the Community Sports Lighting stream and as such, the MNFNC request that the SGSC explore this Infrastructure Fund as an option for the replacement of the WJTR main oval lighting.

Ref: <https://sport.vic.gov.au/grants-and-funding/our-grants/local-sports-infrastructure-fund>

The MNFNC looks forward to working with the WJTR Community Asset Committee and the SGSC to find the best funding options for this project.

Walter J Tuck Reserve Main Ground Lighting Replacement

Background

The MNFNC in 2021 is operating in its 129th year with a continuing strong membership base and an expanding level of participation and volunteerism.

The MNFNC is managed by a successful committee that is representative of three main cohorts being: the Mirboo North Senior Football, Mirboo North Junior Football and Mirboo North Netball (which manages juniors and seniors)

The MNFNC over the last decade has had outstanding success across all grades of Football and Netball. Each grade has enjoyed premiership success, but equally important each grade is supported by a hard working group of volunteers and committee officials.

With the establishment of a Youth Girls Football Team (U13's to 18's) in 2018, the MNFNC now registers more than 280 players each year across 8 football teams and 7 netball teams. These players are supported by no less than 150 Volunteers doing everything from mowing lawns, canteen operations, trainers, cleaners, Auskick clinic and a huge number of individual team officials, just to name a few.

Main Oval Lighting Current State

Training of all teams is held at the Main Oval and Netball/Tennis Complex within the recreation Reserve. The lighting lux levels within the Netball/ Tennis Complex are deemed to be just adequate but require constant monitoring. The Main Oval lighting lux levels are sub-standard and are a severe impediment to midwinter training across all levels.

During the football season (April – September) the main oval lights are used at least 3 times (often 4) a week for training purposes and match practice. Further to that the lights are also used for completion football matches during the darkest days of winter.

Attachment 2.1.9

The current lux readings indicate an average of 29.3 across the ground which falls well below the Australian Standard that lists a requirement as Maintained Average Horizontal Illuminance of 100 lux as shown in Table 2.

As shown in Table 1, the South Gippsland Shire Council's (SGSC) preliminary assessment and rating of the condition of S&R infrastructure at active recreation reserves and stadiums has rated the Walter J Tuck main oval lighting as "basic". As illustrated in Figure 1, the lighting is in fact inadequate and requires an urgent upgrade.

Mirboo North Emergency Services

The main oval is also frequently used by the emergency services helicopter for safe landing in the event of emergency transfers of critically injured patients. The main oval is available at all times with access to both the oval and the oval lighting as required.

Plan and Cost Estimate

The MNFNC engaged Ace Earthmoving P/L to provide a plan and cost estimate (as provided in separate document) to bring the lighting levels to an acceptable level as illustrated in Figure 2.

Please let me know if you require any further information in order to forward this request to the South Gippsland Shire Council.

Regards



Steven Rogers

President

Mirboo North Football Netball Club

[Redacted contact information]

Table 1

South Gippsland Shire Council - 5.8.1. Sport and Recreation Infrastructure Strategy 2020-2030

Preliminary assessment and rating of the condition of S&R infrastructure at active recreation reserves and stadiums.

| PRELIMINARY INFRASTRUCTURE CONDITION ASSESSMENT – To be confirmed by data collection process | | | | | | | | | | | | | | |
|--|-------------------|--------------|----------------------|----------------------------|----------------|---------|-------|-------------|----------|----------------------|---------|-----------------|--------------|-------------|
| Recreation Reserve Name | Reserve Hierarchy | Locality | Changeroom Condition | Female Friendly Facilities | Public Toilets | Storage | Roads | Car Parking | Drainage | Sportsfield Lighting | Fencing | Trees Condition | Oval surface | Hard Courts |
| Leongatha Recreation Reserve | Municipal | Leongatha | ●●● | No | ● | ●●● | ●●● | ●●● | ●●● | ●●● | ●●● | ●●● | ●●● | ●●● |
| Foster Showgrounds | District | Foster | ●●● | No | ● | ●●● | ●●● | ●●● | ●●● | ●●● | ●●● | ●●● | ●●● | ●●● |
| Korumburra Showgrounds | District | Korumburra | ●●● | No | ● | ●●● | ●●● | ●●● | ●●● | ●●● | ●●● | ●●● | ●●● | ●●● |
| Walter Tuck Recreation Reserve | District | Mirboo North | ●●● | No | ● | ●●● | ●●● | ●●● | ●●● | ●●● | ●●● | ●●● | ●●● | ●●● |
| Arthur Sutherland Recreation Reserve | Local | Welshpool | ●●● | Yes | No | ●●● | ●●● | ●●● | ●●● | No | ●●● | ●●● | ●●● | ●●● |
| Dumbalk Recreation Reserve | Local | Dumbalk | ●●● | No | ● | ●●● | ●●● | ●●● | ●●● | No | ●●● | ●●● | ●●● | ●●● |
| Foster Recreation Reserve | Local | Foster | ●●● | No | No | ●●● | ●●● | ●●● | ●●● | No | ●●● | ●●● | ●●● | ●●● |
| John Terill Memorial Park Recreation Reserve | Local | Fish Creek | ●●● | No | ● | ●●● | ●●● | ●●● | ●●● | ●●● | ●●● | ●●● | ●●● | ●●● |
| Koonwarra Recreation Reserve | Local | Koonwarra | ●●● | No | ● | ●●● | ●●● | ●●● | ●●● | No | ●●● | ●●● | ●●● | ●●● |
| Korumburra Recreation Reserve | Local | Korumburra | ●●● | Yes | No | ●●● | ●●● | ●●● | ●●● | ●●● | ●●● | ●●● | ●●● | Not in use |
| Loch Memorial Reserve | Local | Loch | ●●● | No | ● | ●●● | ●●● | ●●● | ●●● | ●●● | ●●● | ●●● | ●●● | Not in use |
| Meeniyian Recreation Reserve | Local | Meeniyian | ●●● | No | ● | ●●● | ●●● | ●●● | ●●● | ●●● | ●●● | ●●● | ●●● | ●●● |
| Nyora Recreation Reserve | Local | Nyora | ●●● | No | ● | ●●● | ●●● | ●●● | ●●● | ●●● | ●●● | ●●● | ●●● | ●●● |
| Poowong Recreation Reserve | Local | Poowong | ●●● | No | No | ●●● | ●●● | ●●● | ●●● | ●●● | ●●● | ●●● | ●●● | ●●● |
| Stony Creek Recreation Reserve | Local | Stony Creek | ●●● | No | ● | ●●● | ●●● | ●●● | ●●● | ●●● | ●●● | ●●● | ●●● | ●●● |
| Tarwin Lower Recreation Reserve | Local | Tarwin Lower | ●●● | No | ● | ●●● | ●●● | ●●● | ●●● | ●●● | ●●● | ●●● | ●●● | ●●● |
| Toora Recreation Reserve | Local | Toora | ●●● | No | ● | ●●● | ●●● | ●●● | ●●● | ●●● | ●●● | ●●● | ●●● | ●●● |
| Mirboo Recreation Reserve | Hamlet | Mirboo | ●●● | No | ● | ●●● | ●●● | ●●● | ●●● | No | ●●● | ●●● | No | ●●● |
| Nerrena Recreation Reserve | Hamlet | Nerrena | ●●● | No | ● | ●●● | ●●● | ●●● | ●●● | No | ●●● | ●●● | ●●● | No |
| Outtrim Recreation Reserve | Hamlet | Outtrim | ●●● | No | ● | ●●● | ●●● | ●●● | ●●● | No | ●●● | ●●● | ●●● | ●●● |

Exclusions: Social Rooms, shelters and other club infrastructure, single sporting purpose reserves and inactive sporting reserves. Note: All building refurbishment projects will trigger accessibility requirements.

● Adequate ● Basic ● Inadequate

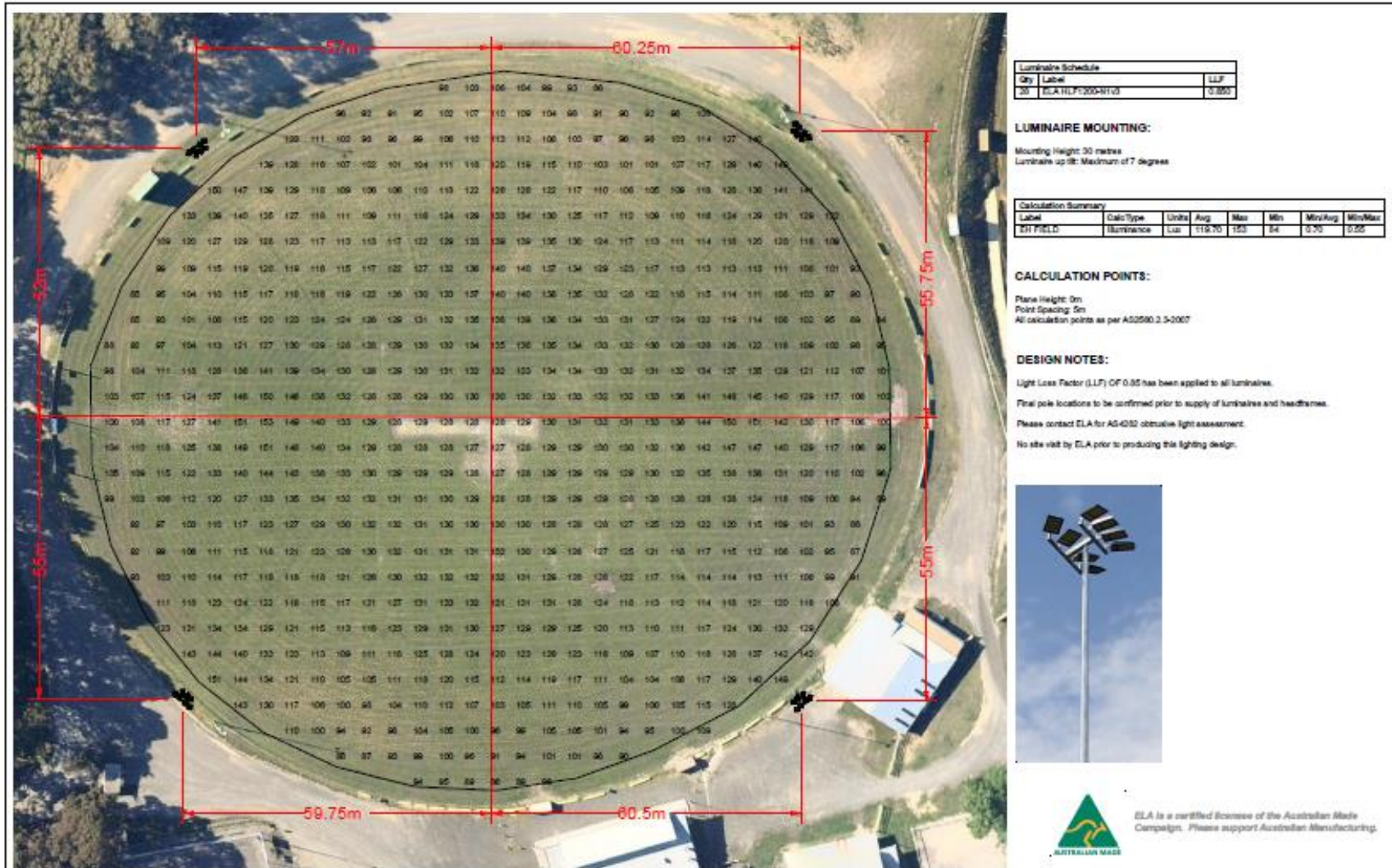
Table 2

AFL PREFERRED FACILITY GUIDELINES State, Regional, Local, School and Remote Facilities (2019)
 AUSTRALIAN STANDARD (AS2560.2.3 LIGHTING FOR FOOTBALL (ALL CODES))

The following table provides an overview of the Australian Standard for minimum lighting requirements for football.

| Level of Play | Typical Activity | Maintained Average Horizontal Illuminance (lux) | Minimum Horizontal Uniformities | | Maximum Glare Rating |
|---|---|---|---------------------------------|------|----------------------|
| | | | (U1) | (U2) | |
| Recreational Level | | | | | |
| Touch and Tag | Touch and tag football | 50 | 0.3 | N/A | N/A |
| Amateur Level (Local, Remote, Junior, School Venues) | | | | | |
| Ball and Physical Training | May be suitable for training at local club level. ¹ | 50 | 0.3 | N/A | N/A |
| Club Competition and Match Practice | Minimum requirement suitable for competition at local club level. Provides minimal viewing distances for spectators. ² | 100 | 0.5 | 0.3 | 50 |
| Semi Professional Level (Regional Venues) | | | | | |
| Match Practice | Suitable for training at a semi-professional level. | 100 | 0.5 | 0.3 | 50 |
| Competition | Minimum suitable for competition at a semi professional level. | 200 | 0.6 | 0.4 | 50 |

Figure 2
Walter J Tuck Main Oval
 Planned Maintained Average Horizontal Illuminance – 119.7 Lux
 Provided by Ace Earthmoving P/L



| Luminaire Schedule | | |
|--------------------|-------------------|------|
| Qty | Label | LLF |
| 30 | ELA HLF1200-81103 | 0.85 |

LUMINAIRE MOUNTING:

Mounting Height: 30 metres
 Luminaire up tilt: Maximum of 7 degrees

Calculation Summary

| Label | Calc Type | Units | Avg | Max | Min | Min/Avg | Min/Max |
|-----------|-------------|-------|--------|-----|-----|---------|---------|
| EST FIELD | Illuminance | Lux | 119.70 | 153 | 84 | 0.70 | 0.55 |

CALCULATION POINTS:

Plane Height: 0m
 Point Spacing: 5m
 All calculation points as per AS2580.2.5-2007

DESIGN NOTES:

- Light Loss Factor (LLF) of 0.85 has been applied to all luminaires.
- Final pole locations to be confirmed prior to supply of luminaires and headframes.
- Please contact ELA for AS4032 obstructive light assessment.
- No site visit by ELA prior to producing this lighting design.



ELA is a certified licensee of the Australian Made Campaign. Please support Australian Manufacturing.

| | | | |
|--|---|--|---|
| Project: MIRBOO NORTH FOOTBALL NETBALL CLUB - WALTER J TUCK RESERVE | Lighting Design Analysis No. ELA210201A | Date: 1/02/2021 | Page: 1 of 1 |
| Description: AFL FIELD LIGHTING | Lighting System: ELA HLF SERIES LED 1200 WATT LED 30 METRE MOUNTING HEIGHT | ENVIRONMENTAL LIGHTING AUSTRALIA  tennislights.com "Made on Phillip Island, enjoyed throughout Australia" | 323 The Concourse, Coes Vic 3902 PO Box 8154, Croydon Vic 3136 P: 03 5962 5587 E: sales@tennislights.com |

SUBMISSION ON
2021/2022 Budget

20 May 2021

To: South Gippsland Shire Council

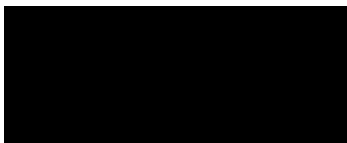
Thank you for acknowledging conflicting dates on SGS website for end of exhibition period, and accepting this submission dated 20 May.

This is a submission on 2021/2022 South Gippsland Shire Budget where it relates to Recreation, Leisure and Community Facilities expenditure for Fish Creek.

I seek the following decision from council:

To use a substantial portion of the \$80,000 currently allocated for replacement of the Falls Road Playground equipment, to purchase and install fitness equipment in the town centre at an agreed location, and to only replace existing playground equipment identified as unsafe, and select new equipment in consultation with the community.

Sincerely yours,

A large black rectangular redaction box covering the signature area.

Bridget Crowe


A black rectangular redaction box covering the first line of contact information.A black rectangular redaction box covering the second line of contact information.A black rectangular redaction box covering the third line of contact information.

Survey results - OurSay Dashboard

| 1.- Name: | 2.- Contact Number: | 3.- Email: | 4.- Address: | 5.- Do you wish to be heard at the open hearing? | 6.- Additional Submission Details: | 7.- All or any part of of this submission will be made public: | submission date | actions |
|-----------------|---------------------|------------|--------------|--|--|--|---------------------|---------|
| Rebecca Meadley | [REDACTED] | [REDACTED] | [REDACTED] | No | Simons Lane is no longer a quiet farm lane – it is a busy bypass road. It is not fit for purpose for heavy vehicles nor the level of traffic it carries. We are formally requesting the South Gippsland Shire Council upgrade the surface of the gravel section of Simons Lane to bitumen (ie seal). | I understand | 2021/04/17 13:49:11 | delete |

BUDGET SUBMISSION: SIMONS LANE UPGRADE

March 2021

| | |
|---|--|
| Submitted by | Rebecca Meadley  Representative for residents of Simons Lane Leongatha South |
| Submission request | Simons Lane is no longer a quiet farm lane – it is a busy bypass road. It is not fit for purpose for heavy vehicles nor the level of traffic it carries. We are formally requesting the South Gippsland Shire Council (SGSC) upgrade the surface of the gravel section of Simons Lane to bitumen (ie seal). |
| Who uses the road | Simons Lane services a number of homes and farms, but it is also used as a bypass between the Bass Hwy and South Gippsland Highway. Residents and tourists Local residents and tourists use Simons Lane to shortcut town when traveling to and from Inverloch/Wonthaggi/Bass Coast region and Koonwarra/Wilson Prom region. Local residents and tourists also used Simons Lane to access the rail trail. Commercial Vehicles Simons Lane carries a significant volume of commercial heavy vehicles, including truck & trailers (dumping dirt just east of the rail trail), cattle trucks (travelling to and from Koonwarra Market) and delivery vehicles (servicing the new building estates off Tarwin Ridge) and many others. School bus A local school bus run commenced picking up students along the length of Simons Lane in December 2020. Emergency vehicles It is our understanding Emergency vehicles and pathology vehicles have stop using Simons Lane due to the unsafe nature of the road surface, potentially delaying response times and delivery of essential services. |
| The road is not \fit for purpose | Simons Lane is not fit for purpose for the level of traffic it carries, particularly heavy vehicles. Simons Lane’s gravel surface is in a perpetual state of disrepair. In summer drivers suffer with dangerous corrugations, loose stones and residents suffer from the health impacts of dust plumes. In winter drivers suffer with dangerous potholes, washouts and sections of deep clay slurry. Due to the high volume of traffic, the infrequent grading of the road is having little impact on quality and safety of the road. Grading the road seems like a waste of council resources. As one resident said 2 days after the road was graded mid March 2021, “it’s like they didn’t even put the blade down”. |
| Traffic usage | Simons Lane Traffic volume was last recorded by the SG Council in May 2018 (for the unsealed section of Simons Lane). At that time, an averaged 141 vehicles used the road each day with an average of 17% being commercial or truck traffic. The commercial vehicle use is well above the normal level of 10-12% for rural roads in the SGSC area. |

BUDGET SUBMISSION: SIMONS LANE UPGRADE

| | |
|--------------------------------|--|
| | <p>New measurement</p> <p>At our request the council will shortly remeasure the road traffic volume. We expect it will show a significant increase in vehicle volume.</p> |
| Vehicle Damage | <p>The state of the road in causing unreasonable and expensive maintenance issues for users and residents.</p> <p>Residents</p> <p>The constant corrugations are rattling our cars into a state of disrepair. Our cars are choaked with dust, have panels coming loose and rattles & squeaks that can not be located by mechanics.</p> <p>Unlike other users, we do not have the option to use an alternative, better maintained, safer road.</p> <p>Non-resident users</p> <p>We also understand that several users of Simons Lane have recently had dangerous tyre blow outs, which they believe are a direct result of the state of the road.</p> <p>School bus</p> <p>We understand the school bus is already experiencing maintenance issues due to corrugations on Simons Lane.</p> |
| Dust & Health | <p>In summer the road is generating plumes of dust that carry long distances. Due to this, residents can not open their home's windows in summer.</p> <p>All vehicles cause dust, but it is particularly noticeable when truck and buses use the road.</p> <p>The dust is getting into our homes, into our water tanks and up our noses, severely impacting residents with allergies and breathing issues.</p> |
| Safety | <p>School bus</p> <p>The bus driver has already complained to parents about the state of the road. We fear the bus will not be able to safely continue to use this route.</p> <p>Rail trail crossing</p> <p>We are also concerned about the state of the road and visibility at the rail trail crossing. Vehicles travel at very high speeds through the rail trail / Simons Lane crossing and we dread the day someone pops out of the rail trail and a vehicle cannot stop in time.</p> |
| Realigning Bass Hwy end | <p>We understand SGSC has commenced the early stages of a plan to realign the Simons Lane exist onto the Bass Hwy, moving it closer Leongatha, to a section of road with greater visibility.</p> <p>For the benefit of the town, we believe it is imperative that heavy vehicles are able to continue to use Simons Lane (or are directed via Whitelaws track through Koonwarra), to ensure the heavy vehicles are not travelling through the populated retail sections of Leongatha (McCartin Street and Bair Street).</p> <p>However, in order for them to use the road, the surface needs a significant upgrade.</p> <p>The road surface needs addressing and significantly improving regardless of the progress with the exit realignment for the safety of both users and residents.</p> |
| Gravel resurfacing | <p>We were advised SG Council aims to resurface (re-sheet) gravel roads approximately every 4 years.</p> |

BUDGET SUBMISSION: SIMONS LANE UPGRADE

We don't recall Simons Lane being fully resurface (re-sheeted) in greater than 8-10 years.

Resurfacing (re-sheeting) the road would only be a partial solution, as gravel roads struggle to withstand the impact from the high-volume of heavy vehicles.

Currently, when additional gravel (stones) is added to the road, within a week, the trucks have pushed the stones off the road onto the edges/gutters.



Conclusion

Simons Lane is not fit for purpose for heavy vehicles nor the level of traffic it carries.

To ensure the safety of vehicles, residents and rail-trail users, we formally request the South Gippsland Shire Council urgently upgrade the surface of the gravel section of Simons Lane to bitumen (ie seal).

Attachment 2.2.2

From: [REDACTED]
To: [Section 223 Submission](#)
Subject: Proposed Council Budget
Date: Thursday, 15 April 2021 12:26:35 PM

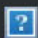
Looking at your media release about the proposed budget what strikes me immediately is that there is no mention of smaller projects in areas of South Gippsland. Apart from the rail trail all the projects seem to be in the townships of Korumburra and Leongatha. Also, I can't see that any fit with the words used by **Julie Eisenbise** "*Particular attention has been paid to the impacts of COVID-19 and helping our community recover from this unprecedented pandemic.*"

The gargantuan projects using many millions of ratepayers money in Leongatha and particularly in Korumburra do not to me seem to really fit this bill.

Diana Cornwell
(Sandy Point)

Attachment 2.2.3

From: [OurSay Team](#)
To: [Section 223 Submission](#)
Subject: New survey response to Budget and Financial Plan Submission
Date: Sunday, 2 May 2021 10:30:11 AM

| | | |
|---|---------------------|---------------------|
|  | Survey New Response | 2021-05-02 10:29:58 |
|---|---------------------|---------------------|

Hi Client,

We have received a new response to your survey titled Budget and Financial Plan Submission

Checkout response below:

1. Name:

→ Tom Colahan

2. Contact Number:

→ [REDACTED]

3. Email:

→ [REDACTED]

4. Address:

→ [REDACTED]

5. Do you wish to be heard at the open hearing?

6. Additional Submission Details:

→ On behalf of the Korumburra Tennis Club, the committee and the members would like to thank the Shire Council for their on-going support of our club and the budget allocations proposed in the 2021/2022 proposed budget.

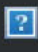
7. Submission Attachments

8. All or any part of of this submission will be made public:

→ I understand

Attachment 2.2.4

From: [OurSay Team](#)
To: [Section 223 Submission](#)
Subject: New survey response to Budget and Financial Plan Submission
Date: Thursday, 6 May 2021 1:29:10 PM

| | | |
|---|---------------------|---------------------|
|  | Survey New Response | 2021-05-06 13:29:01 |
|---|---------------------|---------------------|

Hi Client,

We have received a new response to your survey titled Budget and Financial Plan Submission

Checkout response below:

| |
|--|
| 1. Name: |
| → Paul Rotthier |
| 2. Contact Number: |
| → [REDACTED] |
| 3. Email: |
| → [REDACTED] |
| 4. Address: |
| → [REDACTED] |
| 5. Do you wish to be heard at the open hearing? |
| 6. Additional Submission Details: |
| → Council must re consider its anti development stance on subdivisonal vacant lots which incur a 200% rate increase purely because they are vacant. Also the rural activity zoning is very constricting and is proving to be a disaster in regard to lots of varying size being useless for pratical use. Planning is to restrictive to allow dwellings on such lots and there are scores of these lots in |


and around ruby and kardella. If these lots setup B&Bs based around agriculture, then every business will fail due to business inundation of the same type. Revise the zoning to allow for rural residential lifestyle lots and encourage new and innovative development of these lots.

7. Submission Attachments

8. All or any part of of this submission will be made public:

→ I understand

From: [OurSay Team](#)
To: [Section 223 Submission](#)
Subject: New survey response to Budget and Financial Plan Submission
Date: Monday, 10 May 2021 8:59:06 PM

| | | |
|---|---------------------|---------------------|
|  | Survey New Response | 2021-05-10 20:58:56 |
|---|---------------------|---------------------|

Hi Client,
We have received a new response to your survey titled Budget and Financial Plan Submission

Checkout response below:

| |
|--|
| 1. Name: |
| → I support the Korumburra Tennis Club getting some new lighting and a development plan |
| 2. Contact Number: |
| → [REDACTED] |
| 3. Email: |
| → [REDACTED] |
| 4. Address: |
| → [REDACTED] |
| 5. Do you wish to be heard at the open hearing? |
| 6. Additional Submission Details: |
| → Korumburra Tennis Club has worked hard over the last 10 years to better the club for members and the wider community. We have a stable committee of 10 that meet monthly to discuss club business. We won an A-Reserve premiership the Saturday season just gone which was a great celebration for |

Attachment 2.2.5


our club. We have a strong junior membership and are looking forward to seeing what the future brings for Korumburra Tennis Club with the generous support of the Shire.

7. Submission Attachments

8. All or any part of of this submission will be made public:

→ I understand

From: [OurSay Team](#)
To: [Section 223 Submission](#)
Subject: New survey response to Budget and Financial Plan Submission
Date: Monday, 10 May 2021 8:58:19 PM

| | | |
|---|---------------------|---------------------|
|  | Survey New Response | 2021-05-10 20:58:09 |
|---|---------------------|---------------------|

Hi Client,

We have received a new response to your survey titled Budget and Financial Plan Submission

Checkout response below:

| |
|---|
| 1. Name: |
| → Belinda Whiteside |
| 2. Contact Number: |
| → [REDACTED] |
| 3. Email: |
| → [REDACTED] |
| 4. Address: |
| → [REDACTED] |
| 5. Do you wish to be heard at the open hearing? |
| 6. Additional Submission Details: |
| → As a member of the Korumburra Tennis Club and a committee member I am very excited to see money allocated in the proposed budget for much needed up grades to the tennis club. We have been working very hard behind the scenes to make this club the great success it is. With over one hundred members and a strong junior contingent it will be money well spent for our |


great community and we thank you for your support

7. Submission Attachments

8. All or any part of of this submission will be made public:

→ I understand

From: [OurSay Team](#)
To: [Section 223 Submission](#)
Subject: New survey response to Budget and Financial Plan Submission
Date: Tuesday, 11 May 2021 11:06:52 AM

| | |
|---|---------------------|
|  Survey New Response | 2021-05-11 11:06:43 |
|---|---------------------|

Hi Client,
We have received a new response to your survey titled Budget and Financial Plan Submission

Checkout response below:

| |
|---|
| 1. Name: |
| → Scott Simcock |
| 2. Contact Number: |
| → [REDACTED] |
| 3. Email: |
| → [REDACTED] |
| 4. Address: |
| → [REDACTED] |
| 5. Do you wish to be heard at the open hearing? |
| 6. Additional Submission Details: |
| 7. Submission Attachments |
| 8. All or any part of this submission will be made public: |

Attachment 2.2.7

→ I understand

Attachment 2.2.7

From: [REDACTED]
To: [Council](#)
Subject: Re: Proposed Budget Submission
Date: Tuesday, 11 May 2021 3:15:27 PM
Attachments: [image001.png](#)

Yes please. I just wanted to comment in support on the proposal to replace the lighting at the Korumburra tennis club, and plans for future works associated with the courts and club rooms.

Korumburra is a large town and supports a number of smaller rural communities who all use these facilities. Bass Coast Shire council has recently rebuilt the tennis courts and both Wonthaggi and Inverloch which included fencing and lighting. Given how run down the tennis facilities are in Korumburra, it would be great to see South Gippsland Shire restore the facilities and invest in the future of tennis in South Gippsland. The Korumburra tennis club is growing with new members and expansion of junior tennis participation in the Korrine and District Junior Tennis Association.

Many other sports have had extensive funding with upgrading and renewal of facilities. It's only fair that tennis gets the same opportunities for renewal of infrastructure as these other sports.

As a rate payer and tennis player, I would welcome considerably more expenditure for the facilities at Korumburra tennis club. The replacement of lights will be good start.

Regards
Scott Simcock.

Sent from my iPhone

[REDACTED]

[REDACTED]

[REDACTED]

[REDACTED]

[REDACTED]

[REDACTED]

[REDACTED]

[REDACTED]

[REDACTED]



May 11, 2021
CEO
South Gippsland Council

Dear Kerry

RE: 21/22 budget submission

I am writing on behalf of the Put Her Name On It (PHNOI) Campaign and Women in Gippsland to submit the following budget submission for consideration.

During 2020 and 2021 the PHNOI campaign has gathered significant traction across Victoria. Among many wins was the Geographic Names Victoria review of the Naming of Places in Victoria guidelines with a strong focus on gender equality and cultural identity in place naming. The review will be finalised this year which is highly likely to create foundational change for place naming equality and create greater requirements on authorities like Councils to follow suit.

With the Gender Equality Act 2020 now in place and the need for gender impact assessments on new and reviewed services, programs and policies that have a direct and significant impact on communities, the opportunity to address place naming inequality is now more important than ever.

With low numbers of place naming and other public place commemoration of women globally and locally we are asking LGAs to follow the below actions and allocate the required budget as a starting point to addressing this identified gender gap:

- 👉 Audit place names for gender – internal 220 hrs or outsourced \$20,000
- 👉 Acknowledge the gender-gap – free
- 👉 Amend place name policies – free
- 👉 Accumulate a list of notable local women and their stories – internal 150 hrs or outsourced \$15,000
- 👉 Act to ensure gender balance in place names – place naming free. We encourage you to allocate your existing art acquisition budget or another arts/public place budget to creating public art projects that recognise a range of notable and diverse women or allocate at least \$75,000 each and every year as a demonstrated commitment to public place naming and commemoration of women.

The above has been based on a work undertaken by Bass Coast Shire Council and may need to be adjusted to meet your specific needs.

Attachment 2.2.8

We acknowledge that this submission may be read out in Council, published on the website and recorded in the minutes.

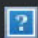
Kind Regards

Kerry Wilson on behalf of Women in Gippsland

[REDACTED]

[REDACTED]

From: [OurSay Team](#)
To: [Section 223 Submission](#)
Subject: New survey response to Budget and Financial Plan Submission
Date: Friday, 14 May 2021 10:11:27 AM

| | | |
|---|---------------------|---------------------|
|  | Survey New Response | 2021-05-14 10:11:20 |
|---|---------------------|---------------------|

Hi Client,

We have received a new response to your survey titled Budget and Financial Plan Submission

Checkout response below:

| |
|---|
| 1. Name: |
| → Frank Hirst |
| 2. Contact Number: |
| → [REDACTED] |
| 3. Email: |
| → [REDACTED] |
| 4. Address: |
| → [REDACTED] |
| 5. Do you wish to be heard at the open hearing? |
| 6. Additional Submission Details: |
| → I write to support the budget item to replace light towers at the Korumburra Tennis Club. The Club now has a dynamic young management team and a growing membership, but the popular night competitions are being severely restricted by the collapse of one of the four very old light towers. The proposed budget item for the design of new facilities will be another vital step in providing |

an environment which will bring more players to the Club by allowing it to provide the sort of facilities which they would rightly expect these days.

7. Submission Attachments

8. All or any part of of this submission will be made public:

→ I understand

Sent: Wednesday, 17 February 2021 10:52 AM
To: Council <Council@southgippsland.vic.gov.au>
Subject: Martins Road, Meeniyan, 3956.

Elizabeth Hodge
[REDACTED]
[REDACTED]

17.02.2021

FAO ROAD AND INFRASTRUCTURE DEPARTMENT

I am writing to express my concerns regarding the levels of hazardous dust pollution arising from the unsealed roads of Ross Street and Martins Road in Meeniyan.

Many residences have been built, with your permission, along these roads and in recent years several more have been constructed at the top of Ross street and further along Martins Road. Some of these homes, including my own, are positioned relatively close to the road, due to other planning restrictions in place. There are some busy cattle farms towards the end of Martins Road so the number of farm trucks and work vehicles using the roads is high. Combined with the increased domestic traffic, these vehicles create an enormous amount of dust.

Residents are not only adversely affected by dust in and on their properties, but a supposedly healthy walk can be positively dangerous when vehicles pass by, leaving a plume of dust to be inhaled by the unfortunate pedestrian. The dust is aesthetically unpleasant (just look at the vegetation at the sides of the roads to imagine what it is like inside our properties), but the main issue is its effect on our health. There is plenty of research which confirms the detrimental effects of breathing in road dust, causing and exacerbating respiratory illnesses being one of the main problems. I have resorted to purchasing an air purifier in an attempt to reduce dust inside our house and combat symptoms of asthma and rhinitis, from which my partner and I are beginning to suffer since our move to Martins Road. Conversations with other residents confirm that these issues have been a concern for some time and that there is a substantial degree of frustration that the condition of the roads is not well managed.

The dust is particularly bad in the summer months when my partner and I have resorted to spraying water on the road. This, however, is not a sustainable solution and using our precious tank water is not really acceptable to us.

I am requesting that the Council consider either sealing the roads or setting up a dust suppressant program. Whilst I feel that our rates contribution more than covers this solution, some councils (EG Cardinia) have a program which offer residents the chance to apply for dust suppression treatment of their roads with a financial contribution per 100m.

I also request that the Council provide some signage indicating a maximum speed and the dust hazards along these roads. Letters to residents and farm owners asking for co-operation may be considered.

As a payer of noticeably high and ever increasing rates, I look forward to your response as soon as possible and hope that a suitable solution can be put into place.

Please acknowledge receipt of this letter.

Yours sincerely,

Elizabeth M Hodge

[REDACTED]

From: [REDACTED]
Sent: Friday, 9 April 2021 11:22 AM
To: [REDACTED]
Subject: RE: Response - Ross St and Martins Rd, Meeniyan FAO The CEO, Sustainable Infrastructure and Asset Management Departments.

Dear [REDACTED],

Thank you for your email and the information that you have been able to provide.

I appreciate you taking the time to drive Ross Street and Martins Road yourself yesterday. I am sure that you will have noticed that the condition of the road falls very short of the focus points listed in the Gravel Roads Maintenance Procedures, and I thank you for raising this concern with your Roads Maintenance Co Ordinator.

As you are aware, I have purchased six "Dust Hazard, Slow Down" signs which I have placed outside my property and that of a neighbour. They have had some effect – I would estimate that perhaps 60% of the regular road users have slowed down to a degree. There are still, however, the persistently oblivious drivers who obviously don't care and continue to drive at dangerous speeds, even around the bend at the driveway of my property and down the steep hill of Ross Street into the township. This continues to be hazardous, both to the environment and to the welfare of residents and pedestrians. An accident will occur and the level of road dust in the air impacts our health and quality of life.

I understand that several residents have approached our local police officer in the past with regards to speaking to persistently dangerous drivers. The response has apparently been that unless there are specific speed signs and the drivers can be caught in action, there is little that can be done. Surely, then, a sensible speed limit clearly marked, would be a step in the right direction? Perhaps you could discuss this with Rob when you provide him with feedback regarding my signs.

I also would like to thank you for arranging the placement of traffic counters on Martins Road. As you suggested, I would like to lodge a budget submission to have a dust suppressant scheme added to the maintenance budget of unsealed roads including Martins Rd and Ross Street. Please would you provide further details on how I should go about this?

With kind regards,
Elizabeth Hodge.

From: [REDACTED]
Sent: Friday, 9 April 2021 10:40 AM
To: [REDACTED]
Subject: RE: Response - Ross St and Martins Rd, Meeniyan FAO The CEO, Sustainable Infrastructure and Asset Management Departments.

Dear Elizabeth,

Thank you for your follow up email received 18th March 2021. Sorry about the confusion surrounding our duplicated response.

I am also sorry to hear that you believe the works performed on the road recent have been inefficient. With regards to this our staff follow the guidelines set out in our Gravel Roads Maintenance Procedures which focuses on:

- Maintain Pavement Shape

- Keep water from ponding on the surface
- Keep table drains and cut outs free flowing
- Replace the lost pavement material from loose windrows and drains or incorporate new material
- Repair defects if any
- Provide a smooth riding surface

These objectives were drawn up in consultation with The Australian Road Research Board (ARRB) who also recommend that suppressants are only a short term fix and are not cost effectiveness for long term maintenance in areas of high rainfall.

In saying this I have raised your concern with our Roads Maintenance Coordinator who will investigate the matter of the road being left hazardous.

With regards to the results of previous studies, unfortunately the staff members responsible for the last studies have left the organisation so finding specifics about the projects has been difficult.

However, I'm told that the results were the suppressants lasted until the next rain at which the road quickly returned to its former state. The resulting conclusion was that the dust suppression processes were not a cost effective solution.

As for signage, after talking with [REDACTED] has told me that council does not believe signage to be effective for slowing down traffic and in some locations has potentially had an adverse effect.

I was able to drive the road yesterday and saw a number of signs already in place. I would be interested to know if this has made a difference myself.

Although Council is unable to assist you at this time there are 2 avenues you can pursue. As mentioned, you can lodge a budget submission to have the road funded by council to be sealed and/or lodge a submission to have dust suppression added to the maintenance budget for unsealed roads. In the meantime I have requested traffic counters to be placed on Martin Road in anticipation of your submission.

I know this does not assist you in the short term, however, I hope that this explains Council's position in these matters.

Regards

[REDACTED]

[Link to Section 223 Submission Fact Sheet](#)



[REDACTED]

From: [REDACTED]@g[REDACTED]

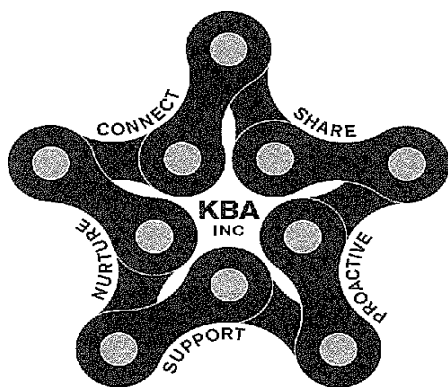
Sent: Thursday, 18 March 2021 1:07 PM

To: Council <Council@southgippsland.vic.gov.au>

Subject: RE: Response - Ross St and Martins Rd, Meeniyan FAO The CEO, Sustainable Infrastructure and Asset Management Departments.

From: Council <Council@southgippsland.vic.gov.au>

Sent: Thursday, 18 March 2021 11:36 AM



Korumburra Business Association Inc.

PO Box 78
Korumburra Vic 3950

President: Noelene Cosson

Secretary: Shirley Arestia

Treasurer: Kelly Hughes

16 May 2021

South Gippsland Shire
Private Bag 4
Leongatha Vic 3953

Dear Council

Submission on Draft Budget 2021/22

The Draft Council Annual Budget 2021/22 is seen to be reasonable with a massive amount of Capital Works projects to be undertaken. We are particularly pleased to see the ongoing commitment shown to the Korumburra Projects where funds have been allocated in this budget for the Korumburra Hub, Korumburra Streetscape, Korumburra Railway Station Open Space and the Rail Trail plus various other smaller projects. These larger projects have been in the making for several years and it is exciting to see them coming to fruition with this commitment.

However, we have mentioned this last budget and bring it to the attention once again that the Commercial Street streetscape does not include having the power supply put underground. The Streetscape is a major project particularly when the street is also the South Gippsland Highway. This will be the first upgrade in over 40 years, and we are unlikely to see another upgrade for a similar amount of time or even longer. There really is only one chance to get the power underground and that is now in conjunction with the streetscape.

The outcome of our submission to the 2020/21 Draft Budget indicated it would be considered in future but we unaware of any further developments in having this project funded.

For the ongoing safety, reliability of the power supply and visual appearance of Commercial Street, the power supply should be placed underground at this time. The power poles are unsightly with the wires crossing over the road and given this is a national highway it should be considered a necessity. The Korumburra Business Association are keen to ensure these long awaited changes and upgrades to our town are carried out with the best possible results. We feel strongly that this budget must include the power supply being moved underground.

We recently wrote to the council to have included in the 2021/22 draft budget, the provision for pressure cleaning around the rubbish bins and under the street furniture in Commercial Street Korumburra. We believe this has not been funded and would encourage you to look favourably at

this request. The appearance of our major towns is important to tourists, visitors, and locals. Shop owners generally sweep their footpaths but do not have the equipment, many do not have access to water at the front of their shops or access inside the bin surrounds to be able to carry out this task themselves. The build-up of dirt, grime and moss under the bin surrounds and the street furniture would only require a pressure clean once or twice a year at the most, to give a much needed lift to these areas. This small maintenance job would be seen as value for money by rate payers, showing the pride South Gippsland has in its towns.

Another issue Korumburra Business Association has been following is a footpath to connect the Korumburra Industrial Estate to Commercial Street. We have previously included this in submissions to the Draft Budget and the response from last year's submission indicated it would be investigated in 2020/21. We have not heard the outcome of these investigations.

There has now been a planning permit issued for a Service Station & Convenience Restaurants on the Industrial Estate in the area where the footpath would be required. We would like to ensure that the footpath progresses and feel it is a relevant safety issue. People can often be seen walking and pushing prams along the edge of the South Gippsland Highway as they make their way to Commercial Street after leaving their vehicle at an Industrial Estate business for attention.

This path was identified in the Korumburra Community Direction Statement as a priority project. It was considered and supported by council in the 2018 Draft Pathways and Trails Strategy where it was transferred to the Footpath Extension Program in May 2018.

We strongly recommend this project to be seriously considered in this budget.

The Korumburra Business Association has been an advocate for the major projects in our town creating a great partnership and united approach with council to deliver the best outcomes. We sincerely hope that you can see that our requests are of great importance and necessary for the ongoing functionality of our town.

Regards

Noelene Cosson

Noelene Cosson
President

Attachment 2.3.2

From: [REDACTED]
Subject: Petition - Port Franklin Footpaths - 14 April 2021.PDF
Date: Monday, 17 May 2021 10:12:18 AM
Attachments: [Petition - Port Franklin Footpaths - 14 April 2021.PDF](#)

Dear Council Members,

Thank you for the accepting our petition.

The Port Franklin Progress Association (PFPA) decided on behalf of its residents that a petition would be the best way to address the safety issues and sensitively protect the ambience of the streetscape. We have 24 schoolchildren walking to and from the bus stop each day, 4 wheelchair bound, an elderly demographic and a growing number of tourists sharing narrow roads with trucks and cars. Port Franklin currently has no footpaths.

Below is a copy of the wording of the petition and the petition and map is attached, We look forward to a positive outcome.

Sincerely

Michael Foley (Secretary, PFPA)

-

We, the below signatories, feel that Port Franklin needs paths that make it safe for residents, particularly children, the wheelchair bound and our elderly citizens to safely access the town's facilities. ie the Old School and its adjacent oval, The Hall and its playground, the boardwalk, Recreation Ground, the Lookout and Jetty Pathway.

The narrowness of the roads makes it dangerous and completely unsafe for users.

We DO NOT want concrete paths but gravel, similar to The Rail Trail and pathway on Grip Rd in Toora. Such pathways are more reflective of the "village" feel we are trying to promote. They would also be much cheaper and environmentally friendlier than concrete and channel which, presently only diverts water and associated road pollutants into the delicate fish nursery environment of Corner Inlet and the adjacent and equally sensitive World Heritage Ramsar Site".

2 / 2

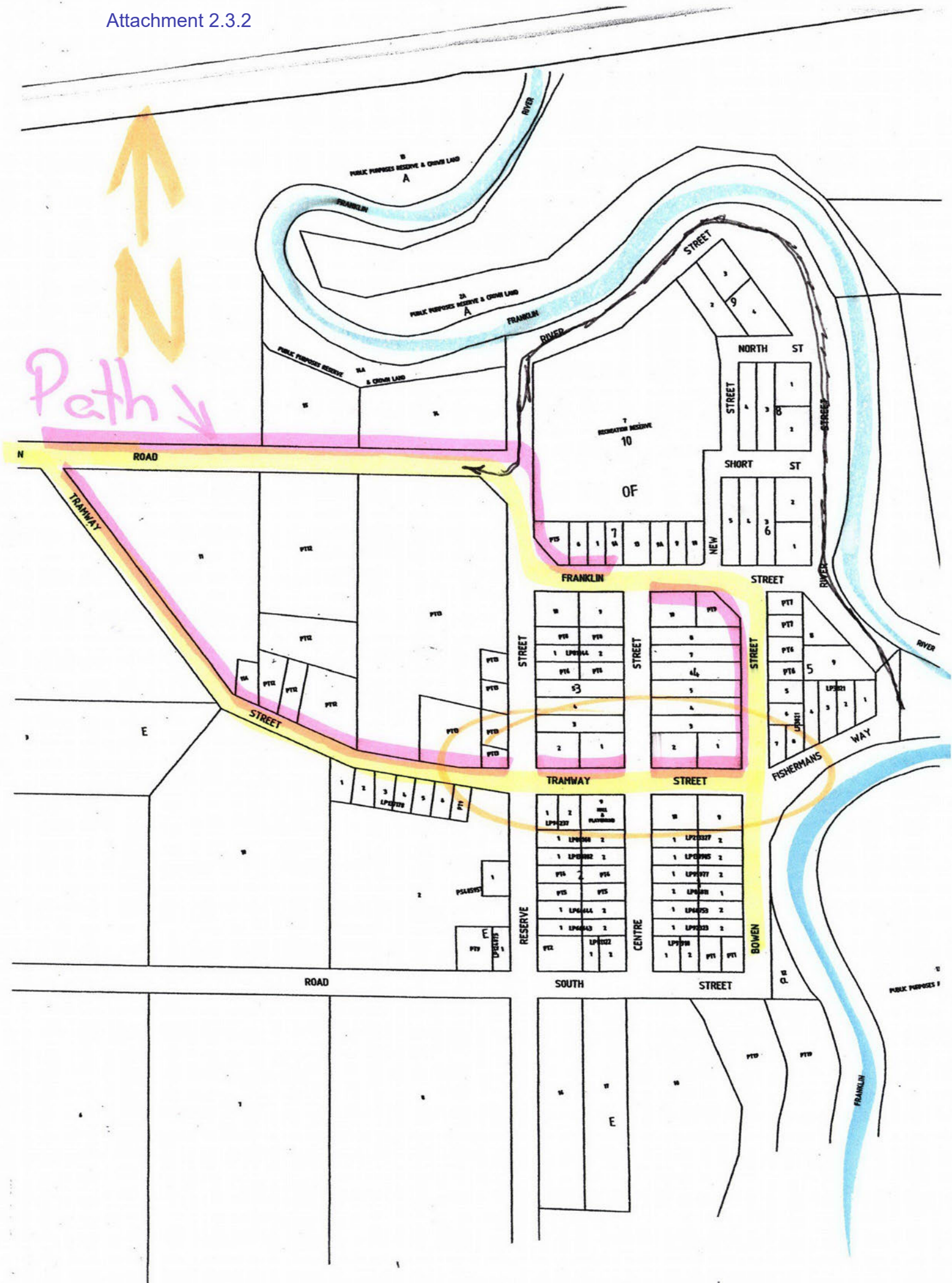
Our request is not only a cheap solution to a potentially dangerous situation, but one that protects the precious environment we live in and enhances the South Gippsland tourist experience and the image it promotes.

We would like this matter to be given your urgent attention.

Sent from my iPhone



Path



We, the below signatories, feel that Port Franklin needs paths that make it safe for residents, particularly children, the wheelchair bound and our elderly citizens to safely access the town's facilities. ie the Old School and its adjacent oval, The Hall and its playground, the boardwalk, Recreation Ground, the Lookout and Jetty Pathway.

The narrowness of the roads make it dangerous and completely unsafe for users.

We DO NOT want concrete paths but gravel, similar to The Rail Trail and pathway on Grip Rd in Toora. Such pathways are more reflective of the "village" feel we are trying to promote. They would also be much cheaper and environmentally friendlier than concrete and channel which, presently only diverts water and associated road pollutants into the delicate fish nursery environment of Corner Inlet and the adjacent and equally sensitive World Heritage Ramsar Site".

Our request is not only a cheap solution to a potentially dangerous situation, but one that protects the precious environment we live in and enhances the South Gippsland tourist experience and the image it promotes.

We would like this matter to be given your urgent attention.

| Date | Name | Address | Signature |
|---------|-------------------|---------|-----------|
| 14/3/21 | K Southwell | | |
| 30/3/21 | S. Caporale | | |
| 30/3/21 | J. Wong | | |
| 30-3-21 | L. Birkett | | |
| 30/3/21 | Z. Timpano | | |
| 30/3/21 | A. Kemper | | |
| 30/2/21 | A. Christ-Hussein | | |
| 30/3/21 | K. Casbolt | | |
| 10/4/21 | D. Keane | | |
| 10/4/21 | J. KEANE | | |
| 12/4/21 | R. Keane | | |
| | | | |

We, the below signatories, feel that Port Franklin needs paths that make it safe for residents, particularly children, the wheelchair bound and our elderly citizens to safely access the town's facilities. ie the Old School and its adjacent oval, The Hall and its playground, the boardwalk, Recreation Ground, the Lookout and Jetty Pathway.

The narrowness of the roads make it dangerous and completely unsafe for users.

We DO NOT want concrete paths but gravel, similar to The Rail Trail and pathway on Grip Rd in Toora. Such pathways are more reflective of the "village" feel we are trying to promote. They would also be much cheaper and environmentally friendlier than concrete and channel which, presently only diverts water and associated road pollutants into the delicate fish nursery environment of Corner Inlet and the adjacent and equally sensitive World Heritage Ramsar Site".

Our request is not only a cheap solution to a potentially dangerous situation, but one that protects the precious environment we live in and enhances the South Gippsland tourist experience and the image it promotes.

We would like this matter to be given your urgent attention.

| Date | Name |
|---------|-------------------|
| 10-3-21 | Linda Cripps |
| 10-3-21 | Wayne Cripps |
| 11-3-21 | Eita Richardson |
| 11-3-21 | Lucas Cripps |
| 11-3-21 | IAN YOUNG |
| 11-3-21 | JAMES BARTHOLOMEW |
| " | CARYL NEZ |
| 11-3-21 | Andrew Dale |
| 11-3-21 | George Lucas |
| 11-3-21 | Deandre Fegan |
| 11-3-21 | Tim Fegan |
| 11-3-21 | Belinda Barrott |

12-3-21 WAYNE FEW

19-3-21 Jocelyn Wood

19/3/21 Travis Sandling

19/3/21 BRYAN BLICK

19/3/21 KARY FINNOR

We, the below signatories, feel that Port Franklin needs paths that make it safe for residents, particularly children, the wheelchair bound and our elderly citizens to safely access the town's facilities. ie the Old School and its adjacent oval, The Hall and its playground, the boardwalk, Recreation Ground, the Lookout and Jetty Pathway.

The narrowness of the roads make it dangerous and completely unsafe for users.

We DO NOT want concrete paths but gravel, similar to The Rail Trail and pathway on Grip Rd in Toora. Such pathways are more reflective of the "village" feel we are trying to promote. They would also be much cheaper and environmentally friendlier than concrete and channel which, presently only diverts water and associated road pollutants into the delicate fish nursery environment of Corner Inlet and the adjacent and equally sensitive World Heritage Ramsar Site".

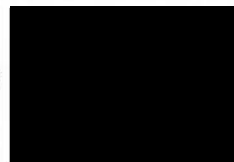
Our request is not only a cheap solution to a potentially dangerous situation, but one that protects the precious environment we live in and enhances the South Gippsland tourist experience and the image it promotes.

We would like this matter to be given your urgent attention.

| Date | Name | Address | Signature |
|---------|-----------------|---------|-----------|
| 13/3/21 | MICHELLE TZEKEY | | |
| 14/3/21 | Michelle Walker | | |
| 14/3/21 | Liz Howard | | |
| 15-3-21 | Deb Dobson | | |
| 15/3/21 | Alison Wagoner | | |
| 15/3/21 | Korie Proud | | |
| 16.9.21 | D. Board | | |
| 16/3/21 | D. Pye | | |
| 16/3/21 | B THOMPSON | | |
| 17/3/21 | S. Lorenz | | |
| 18-3-21 | Paul Austin | | |
| 18-3-21 | K. JENKINS | | |

| Date | Name | Address | Signature |
|---------|-----------------------------|-----------------------------|-----------|
| TODAY | ZOL - DON'T CARE EITHER WAY | | |
| | AS LONG | ITS GRAVEL AND LAD PROPERLY | |
| | BREE JONES | | |
| 20/3/21 | HSA | | |
| 28/3/21 | Nikki Dessen | | |
| 28/3/21 | RAIGAN CRIPP | | |
| 29/3 | MARY SCOTT | | |
| 30/3 | LOMAX | | |
| | LOMAX | | |
| | STAN CROSSLEY | | |
| 2/4 | R. Keane | | |
| | S. Best | | |
| 4/4 | F. Dickinson | | |
| | S. Dickinson | | |
| | T. Armstrong | | |
| | B. Bantam | | |
| | S. James | | |
| 4/4/21 | F. CHAU | | |
| 5/4/21 | L. Zanatta | | |
| 11 | E. M. Goodwin | | |
| 5/4/21 | L. Keane | | |
| 5/4/21 | G. Donnelly | | |
| 8/4/21 | V. Keelsveld | | |
| 12/4/21 | S. Pye | | |
| | | | |
| | | | |
| | | | |
| | | | |

YOU PEOPLE HAVE COMPASSION
 NOT LIKE THOSE NEGATIVE PEOPLE



201

We, the below signatories, feel that Port Franklin needs paths that make it safe for residents, particularly children, the wheelchair bound and our elderly citizens to safely access the town's facilities. ie the Old School and its adjacent oval, The Hall and its playground, the boardwalk, Recreation Ground, the Lookout and Jetty Pathway.

The narrowness of the roads make it dangerous and completely unsafe for users.

We DO NOT want concrete paths but gravel, similar to The Rail Trail and pathway on Grip Rd in Toora. Such pathways are more reflective of the "village" feel we are trying to promote. They would also be much cheaper and environmentally friendlier than concrete and channel which, presently only diverts water and associated road pollutants into the delicate fish nursery environment of Corner Inlet and the adjacent and equally sensitive World Heritage Ramsar Site".

Our request is not only a cheap solution to a potentially dangerous situation, but one that protects the precious environment we live in and enhances the South Gippsland tourist experience and the image it promotes.

We would like this matter to be given your urgent attention.

| Date | Name | Address | Signature |
|---------|---------------------|---------|-----------|
| 13-3-21 | Chantelle Petes | | |
| 13-3-21 | Dean Best | | |
| 13-3-21 | John McHarris | | |
| 13-3-21 | Heather Spooner | | |
| 13-3-21 | Mary Brennan | | |
| 18-3-21 | Michael Sparrow | | |
| 18-3-21 | Stacey Jones | | |
| 18-3-21 | Jane Rousseau-Hayne | | |
| 18-3-21 | Catherine Beaton | | |
| 18/3/21 | Fiona Jenkins | | |
| 19-3-21 | J. Promm | | |
| 19/3/21 | P. Anderson | | |

Attachment 2.3.2

We, the below signatories, feel that Port Franklin needs paths that make it safe for residents, particularly children, the wheelchair bound and our elderly citizens to safely access the town's facilities. ie the Old School and its adjacent oval, The Hall and its playground, the boardwalk, Recreation Ground, the Lookout and Jetty Pathway.

The narrowness of the roads make it dangerous and completely unsafe for users.

We DO NOT want concrete paths but gravel, similar to The Rail Trail and pathway on Grip Rd in Toora. Such pathways are more reflective of the "village" feel we are trying to promote. They would also be much cheaper and environmentally friendlier than concrete and channel which, presently only diverts water and associated road pollutants into the delicate fish nursery environment of Corner Inlet and the adjacent and equally sensitive World Heritage Ramsar Site".

Our request is not only a cheap solution to a potentially dangerous situation, but one that protects the precious environment we live in and enhances the South Gippsland tourist experience and the image it promotes.

We would like this matter to be given your urgent attention.

| Date | Name | Address | Signature |
|---------|-------------------|---------|-----------|
| 10/3/21 | ANDY YOUNG | | |
| 10/3/21 | Hannah Weston | | |
| 11-3-21 | Alana Manders | | |
| 11-3-21 | Tony Loez | | |
| 11-3-21 | NORM HETHERINGTON | | |
| 11-3-21 | LYN STEPHENS | | |
| 11-3-21 | Barry Dedini | | |
| 11-3-21 | Jenny Dedini | | |
| 11-3-21 | Dean Koehler | | |
| 12-3-21 | MONIKA KUCEWICZ | | |
| 12-3-21 | Henriette McH... | | |
| 13-3-21 | RUSSELL BEST | | |

Attachment 2.3.3

From: [REDACTED]
To: [Section 223 Submission](#)
Subject: Bike repair Station -Rail Trail
Date: Friday, 14 May 2021 1:10:04 PM

Hello

I would like to put forward a submission for Bike Repair Stations along our rail trail!
This would encourage bike riders and it's a great council service to the community.

Regards
Rebekah James

Sent from my iPhone

Sent from my iPhone

Attachment 2.3.4

From: [REDACTED]
Sent: Sunday, 16 May 2021 1:59 PM
To: Section 223 Submission <submission@southgippsland.vic.gov.au>
Subject: Henrys Road Loch upgrade

To Council,

I have raised many concerns with the Depot with respect of the petition to request urgent repairs to the unsealed sections of Henrys Road Loch/Nyora, there are 29 signatures on the petition from people who live on Henrys Road or courts off the road.

I am making a submission to the Council Budget to consider this road for a considerable upgrade or to be bituminised.

The road in its current state is very dangerous.

Concerns -

- * At one point there is a dangerous hill where the road is so narrow that only one vehicle can safely use that section. There have been a few incidents where vehicles have gone over in the side ditch to avoid an oncoming vehicle, a local farmer had to help pull them out. There are no signs to advise of this dangerous situation. Per photos.
- * The bottom of this hill is flat for a section, water sits there which creates really large pot holes. Per photos.
- * There are no speed limit signs on the road. The Shire have told me that it's classified as an 'open road', so they can't put up low speed limits. My concern is that one day there will be a bad accident and The Shire would be responsible as there is no safety signage.
- * In 2012 I received a letter from the shire (copy enclosed) stating the the road was to be bituminised, I then heard that the allocated money was used to do up a road in Poowong.

I have included photos to demonstrate the state of the road.

Thank you for considering this request.

Yours sincerely Vito Ferrone.

April 20th 2021

Petition to request urgent repairs and upgrade to the unsealed sections of Henry's rd, Loch/Nyora.

To the South Gippsland Shire Council

We, the residents of Henry's Road, are seriously concerned about the poor condition of Henry's Rd, particularly the unsealed sections. The road is littered with deep potholes, severe corrugations and erosion of the road surface. The road is currently a severe safety hazard and, in parts, nearly impossible to allow two cars to pass. The road condition is also causing a huge amount of wear and tear on resident's vehicles.

As this road is a widely used thoroughfare between Nyora and the South Gippsland Hwy, we request that the council consider allocating sufficient funding in order to upgrade the road as soon as possible.

| Name | Address | Telephone | Signature |
|----------------|---------|-----------|-----------|
| T. FERRONE | | | |
| V. FERRONE | | | |
| D. Beecher | | | |
| J. ELPHICK | | | |
| S. ELPHICK | | | |
| J. Fildes | | | |
| A. Fildes | | | |
| C. CAIRD | | | |
| G. CARROLL | | | |
| H. Southgate | | | |
| Judy Kelly | | | |
| John Brown | | | |
| Basia Lacey | | | |
| Michael Murphy | | | |
| | | | |
| | | | |
| | | | |
| | | | |
| | | | |
| | | | |
| | | | |



