

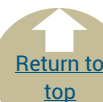
Revised Council Plan Submission Responses 2017 - 2021				
ID Number <i>CP = Council Plan</i>	Elected to Speak?	Speaking Timeslot	Submitter Name <i>(click on name to view submission)</i>	Submission Title
CP05	Yes	10.50am	Tony Walker (Prom Coast Climate Action)	The Prom Coast Climate Action Group submission asks Council in reviewing the Revised Council Plan 2017 - 2021 include developing and implementing a Climate Emergency Response by developing a new Climate Emergency Response Plan which will guide Council's climate emergency challenges over 12 months and for inclusion at all levels of Council operations and activities.
CP01	Yes	11.00am	Dr Moragh Mackay (Chair Energy Innovation Co-operative Ltd)	Request to amendments to the Revised Council 2017 - 2021 as proposed by the Energy Innovation Cooperative
CP04	Yes	11.20am	John McCombe and representative Lindsay Love (South Gippsland Action Group)	Council to honour the commitment to reduce the rates by 3% and follow through by embracing the 'Growth for Reduced Rates' plan.

Proposed Annual Budget 2019/20 Submission responses				
ID Number <i>AB = Annual Budget</i>	Elected to Speak	Speaking time Slot	Submitter Name	Submission Title
AB06	Yes	11.00am	Dr Moragh Mackay (Chair Energy Innovation Co-operative Ltd)	South Gippsland Shire Council and Energy Innovation Cooperative Limited Partnership Proposal
AB10	Yes	11.10am	Craig Kenny and Anne Lewis	Submitter would like various requests to be considered in their submission.
AB13	Yes	11.20am	John McCombe or Representative Lindsay Love (South Gippsland Action Group)	Growth for Rates Reduction and Growth for Reduced Rates to be considered for Exhibition and Equestrian Centre in Stony Creek.
AB15	Yes	11.30am	Shirley Cowling (on behalf of President Brian Enbom) Jumbunna Public Hall Committee	Sealing Jumbunna Hall Car Park
AB03	Yes	11.40am	Charles Price	Objection to the Bair Street Redevelopment Upgrade / Precinct.
AB16	Yes	11.50am	Paul Katsieris Origami (on Behalf of the Walkerville Ratepayers Association)	Acacia Way, Walkerville Path and Sealing Walkerville South Road and Drainage
AB18	Yes	12.00pm	Ross Barnacle (President) Loch Community Development Association	There is a list of works that should be commenced ahead of any planned streetscape works in Loch.
AB14	Yes	12.10pm	Fred Weight	24 hour Boat Launching Facilities at 'The Landing' on Stockyard Creek

Proposed Annual Budget 2019/20 Submission responses				
ID Number <i>AB = Annual Budget</i>	Elected to Speak	Speaking time Slot	Submitter Name	Submission Title
AB17	Yes	12.20pm	Ralph Gallagher	Submitter has multiple questions with respect to the Proposed 2019/20 Annual Budget.
AB07	Yes	12.30pm	Sharon Turton	Sealing Clancys Road, Korumburra and Gravel to Seal Program Funding.

Proposed 2019/20 Annual Budget and Revised 2017-2021 Council

Submission CP01 – Dr Moragh Mackay (Chair Energy Innovation Co-operative Ltd - Request to amendments to the Revised Council 2017 - 2021 as proposed by the Energy Innovation Cooperative.



Speaking to Submission - Yes

Council Plan – Strategic Objective 1.1 Develop a vision for the future growth and development of the Shire in partnership with the community.

Strategic Objective 2.1.1 Where appropriate support the community groups to achieve projects they have ownership of and want to progress.

Strategic Objective 2.1.2 Investigate opportunities to consider a model for community self-determination to facilitate working in partnership with the community.



15/4/2019

Section 223 Submission:

From Energy Innovation Co-operative Ltd to South Gippsland Shire Council re:

The “Revised Council Plan 2017-2021”, with additional related item for “Proposed 2019-20 Annual Budget”.

Our proposals for amendment:

1.The Vision (Revised Council Plan 2017-2021)

The first strategic objective of the current Council Plan (Strengthen Economic Growth and Prosperity) is “to develop a vision for the future growth and development of the Shire in partnership with the community” (p11) with a “major initiative” outlined for 2017-18 listed as “developing a Vision 2040 for the Shire.” (p12)

We propose for your consideration a Vision which

- identifies a coherent path for Council
- sits above the existing list of Council’s strategic objectives, and provides guidance for choosing the most appropriate actions to take to achieve each objective
- makes it easier to clearly identify tangible goals and deliberate outcomes in every sector of Council activity through a cohesive “lens”.
- allows for business and community led initiatives, with all sectors working both together and separately towards our shared future. Council cannot achieve enough alone.
- fits within identified state government targets, goals and planned outcomes.
- is a Vision which could take us through to 2040.
- can and should be already working in the years between 2019-2021.

We believe the current Revised Council Plan 2017-2021 should be amended to begin that path.

- South Gippsland already has a “clean, green, environmentally conscious, food-production, agriculture and tourism” reality, reputation and self-perception.
- South Gippslanders already have a strong sense of local community, with demonstrated capacities to work together in each town, small village or area on locally identified priorities and activities.
- South Gippsland and its people live within financial constraints. We have to take small steps in a financially responsible way.
- Whilst the Energy Innovation Co-operative would like to encourage South Gippsland Shire to set clear community emissions reduction targets, we recognise that Council may not yet be ready for such specificity.

Our proposal: Visioning South Gippsland as **“an innovative, collaborative community moving towards an environmentally, financially and socially sustainable low carbon future”** would:

- build on these known, already existing characteristics, reputation and self-perception.
- enable a true recognition of the climate-changed world we are already inhabiting, which is already having significant impacts on many aspects of our local physical, business and community experience.
- provide a lens through which to set appropriate targets and priorities across all areas of Council activity.
- acknowledge that Council cannot achieve, or lead, all the changes which need to be made, on its own. But it can facilitate community and business directed action, and assist where it has the capacity to do so.

PLUS:

2. The Energy Innovation Co-operative has a specific proposal for an additional initiative that we ask to have included into the Revised Council Plan and budget. See attached document below.

The section of the Revised Council Plan for this proposal to fit within, is:

(quoting from existing plan P17)

“Build Strong partnerships, strengthen Arts and Culture and deliver equitable outcomes

Strategic Objectives:

2.1 Update and implement strategies for community strengthening and engagement.

- 2.1.1 Where appropriate support community groups to achieve projects they have ownership of and want to progress
- 2.1.2 Investigate opportunities to consider a model for community self determination to facilitate working in partnership with the community”.

NB There are currently no initiatives outlined to meet these objectives in 2018-19, 2019-20, or 2020-21

We ask Council to approve the addition of the proposal attached on page 3 below, into the Revised Council Plan as an initiative which will address objective 2.1, including both 2.1.1 and 2.1.2. above over an initial 3 years.

- The model of community self-determination, community project design and delivery which the Co-op initiated and is co-ordinating on Phillip Island, and which we seek to initially pilot in Korumburra, is innovative, collaborative, begins with the groups and activities which are already working and builds on them to achieve community-directed outcomes.
- The Energy Innovation Co-operative has the skills, the structures and the organisational capacity to facilitate this model, and we seek to work with South Gippsland Shire to develop it further, this time within South Gippsland.
- Value adding, by bringing in additional funds from outside this area, is an important feature of our intention and practice, as is utilising local business wherever possible. If we are able to gain a funding contribution from South Gippsland Shire, as well as from Bass Coast Shire, obtaining that value-add becomes more feasible.

We look forward to discussing these two proposals with Councillors as soon as practicable. We request the opportunity for a direct hearing with Councillors regarding this submission.

See proposal and budget item below.....

Energy Innovation Co-operative Ltd and South Gippsland Shire Council. Proposal:

We propose a partnership between the Council and Energy Innovation Co-operative Ltd (The Co-op), to support the Co-op's "Totally Renewable Communities Initiative", a collaborative, community-directed, Council-supported approach to reducing community carbon emissions, including promoting community owned renewable energy generation.

In Bass Coast, this initiative is being trialled, and is well underway, with Bass Coast Council support, on Phillip Island.

- A 2019-2020 Bass Coast budget submission has been put forward for an annual allocation each year for three years which will support the continuation of the largely volunteer work currently happening on Phillip Island, and begin the community conversations within the Waterline communities. This follows from a Council motion passed in Dec. 2018.

In South Gippsland, early community discussions have been held within the Korumburra

community and it is proposed that the first South Gippsland Shire trial community be Korumburra and surrounds.

It is proposed:

1. That Council incorporate in its Council plan a commitment to support the Energy Innovation Co-operative to pilot the collaborative development and implementation of a community carbon emissions reduction target, strategy and actions with community groups, individuals, businesses and organisations in and around Korumburra.
2. That a key action is developing an MOU with the Energy Innovation Coop to outline the project and relationships.
3. That Council budget allocate \$30k annually for an initial three years, to the Energy Innovation Co-op to support the progressive implementation of a collaborative, community- directed, Council-supported approach to reducing community carbon emissions, initially in Korumburra and later other communities.

NB: Value for money: Further funding continues to be sought and gained by the Co-op, from a range of government and philanthropic sources. A Council allocation will greatly help in that endeavour. The overall objective is to, step by step across both shires, achieve community-directed, Council-supported collaborations which work towards zero-net emissions communities across Bass Coast, South Gippsland and beyond.

Background

1. The Energy Innovation Co-op provides co-ordination for the “Totally Renewable Phillip Island” collaboration, which it began with Phillip Island Community and Learning Centre, Plastic Bag Free PI & San Remo, Phillip Island Landcare, Boomerang Bags, PI Conservation Society, Bimbadeen and Bass Coast Shire Councillors Pamela Rothfield and Michael Whelan.
2. Through consultation, public meetings and a facilitated planning process, a community “net zero emissions by 2030” target was adopted for Phillip Island, and strategy developed. Further groups, businesses and organisations joined, including Bass Coast Council, Phillip Island Nature Park, Westernport Water, The Vietnam Veterans Museum and many other businesses.
3. Six work groups were established and are now working as part of the strategy: Renewable Energy, Education, Soil Carbon, Transport, Food/ Waste, and Co-ordination (monitoring & measurement).
4. The Co-op undertook some early discussions with a range of groups in

Korumburra in 2018 with an eye to beginning a similar collaborative process in Korumburra.

5. There has been an interest in the proposal with groups approached so far, including the Thestation@Korumburra Group, Grow Lightly, sustainability focussed- businesses and KBA. Further detailed consultations with them and with more groups and businesses are needed.
6. The Energy Innovation Co-op worked with the CEO of South Gippsland Shire in 2018 to develop a MOU on working together to promote community and business renewable energy and a low carbon future. His suggestion was for the lower amount listed in the prepared draft MOU which is attached. After further community discussions we would request the larger amount for your consideration.

Related Energy Innovation Co-operative Activities.

7. The Energy Innovation Co-operative has the contract to develop a Renewable Energy Roadmap for Bass Coast and South Gippsland, leading to a high-level version for the whole of Gippsland which it will also deliver. Part of this work will involve studying the local level of renewable energy generation, and appetite for further development, as well as engaging in a study of grid capacity to manage that development.
8. The Co-op has presented a proposal that it be selected and funded as a Community Power Hub as per a policy of a prospective Federal Labor Government. South Gippsland Shire tendered a letter of support for that proposal.
9. The Co-op now has the legal structure, draft legal documentation and on-line mechanisms to raise funds from local investors wanting to invest in local community energy solar or wind generation projects. Taking this capacity to project delivery is intended as part of the "Totally Renewable Communities" initiative.
10. The Co-op is developing an on-line tool for a "Smart buy" of batteries and solar to make it easy for households to install solar and batteries, using vetted local companies and businesses, and quality materials. This will also be incorporated into the "Totally Renewable Communities" activities.
11. The Co-op is an organisational member of a Co-operative (Co-operative Power) which is moving towards becoming a community owned electricity retailer. An initial electricity retail

offering will be available later in 2019 as part of the "Totally Renewable Communities" activities.

12. The Co-op's Southern CORE (Community Owned Renewable Energy) Fund, which is already in operation, has some (still limited) capacity to support community groups to install solar on the buildings they manage. Additional funding is required to fund the energy assessments/ feasibility studies required before allocation of funding.
 - The Co-operative's 90 kW solar & 45kW battery storage installation at the State Coal Mine Wonthaggi will provide an ongoing income into that Fund, for projects across Bass Coast and South Gippsland Shires and beyond.
13. The Co-op has a clear commitment to work with local businesses to capitalise on business and employment opportunities in the transition to renewable energy and a low carbon economy.

We ask for Council's consideration for this proposal as an addition to the Council plan and budget for the 2019-2020 budget.



Dr Moragh Mackay

Chair Energy Innovation Co-operative Ltd.

Submission CP04 – John McCombe Representative Lindsay Love (South Gippsland Action Group) - Council to honour the commitment to reduce the rates by 3% and follow through by embracing the 'Growth for Reduced Rates' plan.



Speaking to Submission – Yes

Council Plan – Strategic Objective 4.3 Develop a ten year 'Sustainable Cost Reduction Strategy' based on improved operational efficiencies and population growth, to be utilised for value for money service improvements, better infrastructure and / or rate reductions.

Mr John McCombe

23 April 2019

Chief Executive Officer
South Gippsland Shire Council
Private Bag 4
LEONGATHA VIC 3953

Dear Councillors

Section 223 Submission:
• Budget
• Rates Review
• Proposed Council Plan

My focus is on requesting Council to honour the commitment to reduce rates by 3% across the board. It's a commitment made in the current term of council and therefore is yours to honour. Council currently has an extremely poor satisfaction level right across the community and honouring this commitment will go a long way to improving that image. Follow through by embracing the 'Growth for Reduced Rates' (GfRR) plan and your stocks will soar!

Any shortfall required to balance the budget for FY year 2019-2020 should be clawed back from 'Cash and Other Assets'. It is my understanding there are sufficient funds available for this to occur, given the Finance Manager, Ms Tracey Lindupp, projected in October 2018, cash and other assets were expected to be a tad under \$19 million this year. Since October 2018, there have been a number of instances where serving Councillors have indicated publicly the Shire could afford to reduce rates by 10%, or more [Ref. Public Meeting, Korumburra Scout Hall, 1 October 2018, organized by South Gippsland Rate Challengers (SGRC) and addressed by Cr's Don Hill and Meg Edwards]. Approximately 80 ratepayers attended the meeting, along with State Government MP Danny O'Brien, who also addressed this meeting. A second meeting was held at Korumburra, followed by similar meetings at Mirboo North and Venus Bay. Cr. Andrew McEwen and Cr. Don Hill attended the Mirboo North meeting.

Immediate action should follow to release allotments for future residents to purchase. Despite assurances to the contrary from Council, real estate agents consulted are in unison when it comes to allegations that SGS is not meeting the market. That situation must change! Blockages to subdivisions proceeding need to be removed, the so called 'blue line' rule needs to be re-visited, that's one where a 'win/win' appears to be achievable. Strong anecdotal evidence indicates technical detail's, unreasonable demands on developers and incredibly slow processing, have combined to create an unacceptably poor image of SGS as a place to do business. Mention SGS and developers aren't interested! There needs to be a root and branch examination of regulations and procedures, to ensure suitable allotments are available. Years of processing need to be condensed into days or weeks. It can be done elsewhere, so it can be done here!

To do this requires a shift in focus from 'process' to achieving sensible outcomes. If personnel are found to be incapable of achieving this objective, or underperforming, then changes will need to be made. We simply must allow things to flow by adopting more flexible rules, regulations & practices. 'Empire building' needs to be eliminated. I expect some of the existing regulations pre-date changes to the taxation laws regarding allowable expenditure deductions, which were limited to claims relating to the 'primary source of income'. That took the old 'hobby farm' problem properties out of the equation. By updating the rules and regulations we can cater for the likes of the Equine fraternity, without impacting greatly on commercial farm land.

Rate reduction is the first step necessary to embark on an audacious course of action, that has the potential to increase the SGS population to around 38,000 by 2025, and to 48,000 by 2036. That's an increase in residents of about 60%. Compare that with the current and projected growth rate of 1.4% that gets us to 36,000 by 2036. The GfRR plan will get us on par (more or less) with Baw Baw and Bass Shires, whereas the existing planned trajectory will see us drop further and further behind. Is that really what SGS constituents want?

The proposed population increase translates into achieving CRITICAL MASS – around 50% increase in ratepayers (19,000 assessments becomes 29,000). '*Critical mass*' is the game changer for the Shire. With critical mass we stand to get one full service town. Achieving that will considerably reduce the flow of money being spent outside the Shire (that's currently \$195 million pa). Public transport, be it intra or inter town bus services, become a reality and it makes the case for the return of the trains to the Shire easier to make. This is how we get a '*full service*' hospital and fully staffed 24/7 police stations. Think about what the population increase will do for even the smallest of football/netball clubs, no more paying players to come down from Melbourne to make up the numbers (the young tradies and their families will take up the slack), etc etc.

What makes the GfRR growth plan feasible now, whereas it was not even on the 'radar in 2013, when the 301 pages 'South Gippsland Housing & Settlement Strategy' was adopted? It's about taking advantage of the changed situation in Melbourne. People are anxious to get out of there and the State Government is keen to hold the door open. Present the GfRR plan to them and Spring Street will be more obliging with infrastructure funding!

South Gippsland Shire ought to do the right thing and get on the front foot when it comes to helping Spring Street out! We might get noticed and get more of the funding so often requested, but rarely received.

There is no need to be put off by the natural constituent concern about the GfRR plan upsetting their lifestyle. We have been mindful of this aspect when looking at where potential growth pockets might exist. The hamlets will remain hamlets, but with much improved services and facilities. The bulk of the population increase will be absorbed into the four largest towns, primarily because they are already serviced. The Nyora - Poowong – Loch Sewerage System installation, transformed Nyora into a prime town for residential development. Nyora will likely be the first town to absorb the newcomers into the Shire. Unsuitable terrain will restrict development of Poowong and Loch; however, both have scope to expand sufficiently to ensure their viability. The '*state of the art*' sewerage system came at a cost of around \$20 million. Based on 2016 numbers, around 400 premises have connected (100% uptake). Therefore, if looked at in terms of return on investment for SGS, the need for further development of this precinct is a '*no brainer*'.

Korumburra will be the next town to notice a significant population increase, although it too will be restrained somewhat because of difficult terrain.

With the aforementioned towns, research confirms very little encroachment into farm land will be necessary.

Key to the GfRR plan (publicly released Tuesday, 5 March 2019), is the fact that even the smallest hamlets will have much to gain, if Council adopts it as '*policy*'. It is aimed at spreading the rates load to minimise potential future rate rises. Failure to adopt the GfRR plan condemns all of us to future rate increases year after year. These increases are currently conservatively estimated to be at the rate of 2.5% pa for the next 17 years.

Adopting the GfRR plan does not require radical changes to the exhaustive plan prepared by Planisphere - 'South Gippsland Housing & Settlement Strategy – for the South Gippsland Shire Council, September 2013'. This plan could not have envisaged the problems that have arisen in Melbourne in the intervening years, which now have the potential to impact of what we can achieve in SGS. What I am advocating will eventually take place if nothing is changed. The aim is to accelerate the growth of the rates base (assessments), to enable containment of those forecast rate increases.

Look carefully at the plan details with an open mind, and you will see it is about minimising disruption to established lifestyles, whilst extracting maximum value out of services and infrastructure already in place. The net gain to Council revenue can be used to reduce, or at least, minimise increases and/or it can help to pay for additional infrastructure.

Take note, since formulating this plan NO alternative has emerged. Councillors received individual communications so all are fully informed. The South Gippsland Sentinel Times (SGST) attended the South Gippsland Action Group (SGAG) launch and clearly saw the value in the GfRR plan. I quote: "And they have a practical idea for progressively reducing the level of rates over time" (Ref. SGST, 13 March 2018, p3).

The benefits can be enormous if we 'spike' the population growth rate trajectory for a relatively short time. Let me describe it like this: "We run, instead of crawl for a while and then settle back to a nice energised walk". Because it's the most commonly expressed concern heard, I reiterate the intent is for hamlets to remain hamlets. However, in support of why some change should be acceptable to ratepayers across the broad spectrum of communities - let me quote a small segment from p26 of the aforementioned document:

"... While growth is occurring, and is projected to continue, it is focussed on a small number of settlements. The rate of growth in these settlements is relatively modest, making it difficult to fund investment in new community infrastructure. At the other end of the scale many small settlements have stable or declining populations, creating pressure in relation to the ongoing retention and maintenance of community infrastructure."

I do not accept the aforementioned state of affairs is satisfactory, when viewed in the light of the opportunity presented to us by the Melbourne situation. Do you?

The greatest challenge the GfRR plan faces is for Councillors' to be able to see the big picture and set parochial interests aside long enough for the plan to gain enough traction to be effective in growing the rates base. If adopted, I am sure your local constituents will thank you for it as the benefits start to flow. There will be less concern overall as pressure on the hip pocket nerve eases - marginal businesses will blossom and many new ones will emerge. Jobs will be created as a result. Furthermore, the envisaged spread of infrastructure encompassing numerous smaller towns and hamlets will help to negate the oft expressed argument that they are underserved, when compared to what is available in larger settlements.

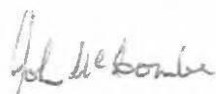
The SGAG GfRR plan strongly supports the demands of the residents of this shire for preservation and conservation standards to be high. The plan includes sewerage provision to the coastal villages and Fish Creek. Although not always obvious to the casual observer, ground water pollution is a serious matter. Venus Bay is of particular concern. This pollution issue MUST be addressed sooner rather than later!

My goal is to create a situation within SGS, where I can be reasonably confident my grandchildren and great grandchildren can continue to live here for as long as they choose.

Think bigger!

I, John McCombe, formally request to be heard in support of my submission, as per the South Gippsland Shire Council submission process as outlined in Section 223 of the *Local Government Act 1989*.

Yours faithfully



John McCombe

CC: Councillors Ray Argento, Aaron Brown, Rosemary Cousin, Steve Finlay, Don Hill, Frank Hirst, Andrew McEwen, Jeremy Rich & Alyson Skinner.


Please note:

A petition to support this submission was prepared during the public exhibition period and delivered to the Council on 6 May 2019. As it was received after the closing date, it is proposed they be presented at the Special Meeting of Council on 29 May 2019 for Council to resolve it needs to be tabled and dealt with as an attachment to the respective submission. Clause 102 (b) of Local Law No.3 2010, allows the Council to deal with a petition earlier than the next Ordinary Meeting as follows:

"Clause 102(b) A petition or joint letter presented to the Council must lay on the table until the next ordinary meeting of the Council and no motion, other than to receive the petition or joint letter, may be accepted by the Chair unless the Council agrees to deal with it earlier."

As the next Ordinary Meeting, will be held after the Special Meeting to 'consider and decide' on submissions, it is recommended the petition be brought to the Special Meeting to be considered with John McCombe's Proposed Council Plan submission. The petition *prayer* "*South Gippsland Shire Council is to set rates this year at a level that honours the commitment made last year to an overall 3% rate reduction by 2021*". This had 432 signatures, 365 within the South Gippsland Shire (Shire), 9 outside of the Shire, 28 invalid and 1 perceived conflict of interest of a Councillor.

Submission CP05 – Tony Walker (Prom Coast Climate Action Group) – Implement a Climate Emergency Response by developing a new Climate Emergency Response Plan which will guide Council's climate emergency challenges over 12 months and for inclusion at all levels of Council operations and activities.

Return to top

Speaking to Submission - Yes

Council Plan – Strategic Objective 3.2 – Facilitate community and business renewable energy programs and sustainable practices to reduce the Shire's carbon footprint.

To the Chief Executive Officer

Submission Re: South Gippsland Shire Council Plan 2017-2021

Thank you for the opportunity to present this submission to Council.

ACF Prom Area Climate Action (PACA) is part of a network of independently organised, volunteer-run climate action groups in the Australian Conservation Foundation community.

We request that South Gippsland Shire Council open a dialogue with the community to begin a process of declaring a Climate Emergency and initiating a shire-wide mobilisation through a formal program of actions that the Council will undertake, that are linked into the overall Council Plan.

We request that Council commit to reviewing the Council Plan with a view to developing and implementing a climate emergency response by Council, in collaboration with the South Gippsland community, as its highest priority, including the development of a new Climate Emergency Plan to guide the emergency response by Council at all levels of Council operations and activities.

We expect this to be a process that will take place over a 12-month period, with a view to Council having a fully developed Climate Emergency Plan, established by Council to accelerate sustained and meaningful action to engage with the climate emergency challenge.

As background, *The State of the climate 2018* report produced by the Bureau of Meteorology and the CSIRO states that Australia's climate has warmed by over 1°C since 1910, leading to increased extreme heat events, decreased cool-season rainfall in agricultural areas and decreased stream flows in southern Australia.

The changing pattern of local rainfall over a 130-year period in Foster is evidence of the impact of this changing climate. There has been close to a 25 per cent decline in rainfall over the period – around 30mm per decade. This must lead us to wonder what might the rainfall be like in 20, 40- or 60-years' time, and what impacts might that have on agricultural production, and thus on farm profitability and the regional economy and liveability?

The Australian economy will be heavily affected by the changing climate. Some of these impacts may be slow to manifest and some relatively easy to adapt to. There may even be

new economic opportunities arising from climate change. But other effects will be intense, insidious and disruptive across all sections of our economy and society.

As the Australian government's Department of Climate and Energy states, Primary industries, such as agriculture, forestry and fisheries, are highly sensitive to weather extremes and variations in climate. Climate change presents new challenges in some locations and industries, while presenting new opportunities in others. Over the coming decades, projected climate change is likely to increase productivity risks for agriculture, forestry and fisheries in different ways:

- The increased frequency of drought conditions in southern Australia has the potential to affect agricultural yields.
- Increasing temperatures and more frequent extreme heat events are likely to place livestock at greater risk of heat stress, reducing livestock productivity and reproductive rates.
- Crops and horticulture are facing changes in growing season and changed frequency and intensity of heatwaves and storms.

The Department also states that human health is linked with environmental factors such as temperature, and air and water quality. Australia's greatest health threats from climate change are expected to come from extreme weather events (such as heatwaves), rising temperatures and the changing variability of rainfall. The increasing frequency and intensity of heatwaves and other extreme weather events poses risks to human health, including injuries, disease and death, and disruption to health services. Drought has been linked to decreased mental health, particularly in rural communities.

Planning for these impacts is critical to the interests of the South Gippsland Community. Yet, within the entire South Gippsland Shire Council's **Revised Council Plan 2017-2021**, we note that "Climate Change" is mentioned only once - under Council's Strategic Objective 1, *Strengthen Economic Growth & Prosperity*, (p. 10), Council commits to "...consider(s) climate change..."

The South Gippsland community knows that Council can and must do much more than merely consider climate change. We look forward to working with Council and the South Gippsland community through a process of revising the Council Plan to prioritise a climate emergency response within the Plan.

We look to Council to provide clear leadership and make the right decisions on formulating a collaborative path to an appropriate response to this overwhelmingly serious and urgent issue. The benefits to Council are clear; they lie in the benefits to the broader community.

Please note that, should there be the opportunity, we would want to make a presentation to Council in support of this submission.

26 April, 2019.

--END--

Proposed Annual Budget 2019/20 Submission Responses



Submission AB03 – Charles Price – Objection to the Bair Street Redevelopment Upgrade / Precinct

Speaking to Submission - Yes

Please note the submission by Charles Price on the Rating Strategy was retracted and the only part of this submission now relates to Bair Street Redevelopment.

To who it may concern. I wish to put forward a submission to Council in relation to the current rating strategy. I believe that the council should include this item in the strategy.

5. Waiver

In section 171 of the Local Government Act 1989, for sub-sections (1), (2) and (3) substitute—
"(1) The Council may waive the whole or part of any rate or charge or interest in relation to—

(a) an eligible recipient under subsection (4); or

(b) any other class of persons determined by the Council for the purpose of waiving rates or charges on the grounds of financial hardship.171A. Waiver by application—financial hardship

(1) A person who—

(a) is suffering financial hardship; or

(b) would suffer financial hardship if that person paid the full amount of a rate or charge for which he or she is liable may apply to a Council for the waiver of the whole or part of any rate or charge or of any interest imposed for late payment.

(2) The Council may require the applicant—

(a) to give further particulars; or

(b) to verify particulars in relation to the application.

(3) The Council may grant an application if the Council is satisfied that the applicant is a person who is suffering financial hardship if that person paid the full amount of the rate or charge for which he or she is liable.

(4) A person who—

(a) gives to a Council any information which is false or misleading in any material particular in respect of an application under this section; .

I also believe that the council decision in approving the redevelopment of The bair st precinct , and using rate payers money to do this amount to Corporate Socialism. What benefit is this to the ratepayer?

Yours sincerely
Charles Price

Submission AB06 – Dr Moragh Mackay (Chair Energy Innovation Co-operative Ltd - South Gippsland Shire Council and Energy Innovation Cooperative Limited Partnership Proposal.



Speaking to Submission - Yes



Memorandum of Understanding South Gippsland Shire Council and Energy Innovation Co-operative Ltd

Partner Organisation Details:

Name: South Gippsland Shire Council
ABN: 67 816 770 786
Address: 9 Smith Street (Private Bag 4), Leongatha VIC 3953
Website: www.southgippsland.vic.gov.au
Key Contact: Geoff McKinnon
Position: Sustainability Coordinator, South Gippsland Shire

and

Name: Energy Innovation Co-operative Ltd
Registration No: GOOO 3472H **REGISTRATION DATE:** 29/7/2009
ABN: 18 807 187 154

Leadership contact: Moragh MacKay
Position: Chair, Energy Innovation Co-op

Enacting the MOU:

South Gippsland Shire Council will provide the Energy Innovation Co-operative Ltd with a contribution of up to \$20,000 to:

- Support planned activities within the South Gippsland Shire which are consistent with Council's objectives as outlined in the Council Plan or Sustainability Strategy and align with the principle purpose and objectives of the Energy Innovation Co-op.
- Enable Energy Innovation Co-op to leverage further funding to support these activities from sources such as state and federal governments, ARENA, Clean Energy Council and philanthropic trusts and other donations

The amount of the financial contribution provided under this MOU will be determined by SGSC, with consideration of requests for funding assistance from other community groups to support projects or initiatives and/or other competing budget priorities



The Energy Innovation Co-operative will utilise that funding within South Gippsland Shire on:

- Community engagement, planning and consultations related to Totally Renewable Communities and community owned renewable energy initiatives;
- Feasibility studies and energy assessments for donation and investment community owned renewable energy projects;
- As a local government contribution demonstrating support for further project funding application/s from external sources; and/or
- Any other energy related project consistent with the aims of this MOU determined by mutual agreement.

Reporting:

The Energy Innovation Cooperative will ensure that any funding provided under the MoU will be acquitted in accordance with the attached **EICO-op MoU Acquittal Form**.

Communication:

The two parties agree to establish and maintain a productive working relationship and to be alert to opportunities for collaboration, including but not limited to advocacy, funding applications, professional development and community activities and events.

Day to day contact persons:

South Gippsland Shire

Brad Kijlstra-Shone (Sustainability Officer)

Energy Innovation Co-operative

Susan Davies (Secretary)



TERM OF THE AGREEMENT

This MOU will operate for a period of twelve months from the date of joint signing, before which time, renewal, termination or extension will be decided by the two organisations.

Signed on behalf of: South Gippsland Shire

Name: Geoff McKinnon

Organisational Role: Sustainability Coordinator

I confirm that I am authorised to enter into this MOU on behalf of the South Gippsland Shire Council

Signature _____

Date _____

.....

Signed on behalf of Energy Innovation Co-operative Ltd

Name: Moragh Mackay

Organisational Role: Chair Energy Innovation Co-operative Ltd

I confirm that I am authorised to enter into this MOU on behalf of the Energy Innovation Co-operative Ltd

Signature _____

Date _____

Submission AB07 – Sharon Turton - Sealing Clancys Road, Korumburra and Gravel to Seal Program Funding.



Speaking to Submission - Yes

Attention: Chief Executive Officer

Dear Sir/Madam,

I write to request that council please consider allocating funds within their upcoming 2019/20 Annual Budget for unsealed South Gippsland Country Roads. Our gravel roads are in extreme need of repair/sealing, due to their very poor condition.

I ask that the council please consider the importance in funding the 'Gravel to Seal' program within their budget, so that roads like our Clancys Road, Korumburra can become a much safer Road for everyone to travel on. The below names are residents of Clancys Road, Korumburra who stress their concerns about the state of Country Roads in our South Gippsland Shire area.

55 names were listed as permanent resident drivers on Clancy's Road (gravel section only) in support of this submission.

Please consider this request as high priority for the future of our Country roads.

I look forward to your reply.

kind regards

Sharon Turton

Sharon Turton

Submission AB10 – Craig Kenny and Anne Lewis - Submitter would like various requests to be considered in their submission.



Speaking to Submission - Yes

22 April 2019

The Chief Executive Officer
South Gippsland Shire

By email: submission@southgippsland.vic.gov.au

Dear Councillors,

S223 submission on the Revised Council Plan and Proposed Budget for 2019/20

Please accept this submission under s223 of the Local Government Act 1989. We (Craig Kenny and Annie Lewis) reserve our right to make a verbal submission in support of this written submission.

We are writing as individual landowners and as ordinary members of several local community groups. The views expressed in the submission are our own and do not represent the views of any group or association.

Decision to Exit Home Support Services

The decision to exit from the delivery of home support services is supported and is considered appropriate and reasonable in the light of future directions of the aged care program.

The Council decision to invest in Positive Ageing initiatives is also supported and affirms the broader role that local government might play for older people in the community. Consideration should be given to how universal services and the design of major facilities might need to be adapted over the coming decade to meet the needs of a growing and healthier aged community.

Removal of Rate Reduction

Council's are under significant pressure to ensure that value-for-money services and appropriate social infrastructure is provided for a growing community. The decision to remove the 'rate reduction resolution' is supported but careful consideration needs to be given to how the replacement 'cost reduction' strategy will be implemented.

Request to Council: Council might consider using a 'deliberative' community engagement process develop criteria to guide future decisions about cost-savings and to best understand how savings or discretionary expenditure might be (re)invested to provide services in response to emerging community needs.

Strategic Objective One – Strengthen Economic Growth & Prosperity

Weeds and Weed Control

Continuing concerns are being expressed by responsible land-holders that some land-holders and Council are not doing enough to control the spread of invasive and noxious weeds.

Individual land-holders have a responsibility to neighbours and the broader area to ensure that weeds are appropriately controlled on their land. Part of the problem might be inexperienced land-holders moving into the area or more established farmers not having the resources or enthusiasm for the task. No matter what the cause, there is a need for education, practical support and a compliance focus to ensure weeds are effectively controlled.

Council has an obligation to ensure that public land and roadsides are subject to appropriate control measures.

Request to Council: Budget consideration should be given to resourcing and establishing an engagement process with the community, land-holders and stakeholder groups (such as Landcare) during the 2019/20 financial year to identify the ways in which improved weed control can be achieved within the South Gippsland Shire. This might include amendment or creation of relevant local laws, increased resourcing to Council's maintenance activities, material support to community-based initiatives, increased compliance activities or concrete project proposals for consideration in future budgets.

Strategic Objective Two – Build Strong Partnerships, Strengthen Arts & Culture & Deliver Equitable Outcomes

Demographic Change and Renewal

South Gippsland Shire has strong, resilient communities that work constructively to solve local problems with minimal support from Council. There appears to be a significant demographic shift occurring as younger families and pre-retirees move into the area and the service and social needs change. Council has an obligation to understand these changes and associated needs and ensure that its policy and services strategy keeps pace.

This might include the development and renewal of local community infrastructure that to support activities and connections. Appropriate investments to ensure the maintenance and renewal of the 'small halls' that are so important to community life outside the larger towns as well as ensuring that communities are provided with assistance to maintain and improve legacy infrastructure such as local tennis courts and reserves.

Request to Council: That Council consider including the following activities in its 2019/20 budget:

- (i) initiating social planning and community engagement in the 2019/20 financial year to understand the extent and impact of demographic change and community renewal to inform the development of Council's Public Health & Wellbeing Plan and Council Plan that will be due for adoption by the next Council in 2021; and
- (ii) commissioning an audit of existing local community assets in 2019/20 (halls, tennis courts and reserves) outside of the major towns (in collaboration with local communities) to understand the 'fitness for purpose', maintenance and renewal costs and ownership/management structures that might be required to sustainably support this important community infrastructure.

Strategic Objective Three – Improve South Gippsland's Built Assets & Value our Natural Environment

Road Safety

A key issue for local communities living on and using the Grand Ridge Road, Leongatha – Yarragon Road and Warragul-Leongatha Road is road safety. Part of the problem is driven by the increasing use of the road by visitors and tourists (motor-cycles and car clubs) as well as continuing issues with drivers who are just driving without regard for other road users. A growing number of cyclists using these roads also require protection from speeding vehicles and careless driving.

Two main issues arise for local residents:

- Speed and enforcement – there are many local reports of unsafe and irresponsible road-use on the local Facebook page and other networks. Road safety is a critical issue for all people living in the area and there is a sense that better road signage, speed restrictions and appropriate enforcement would go a long way to improving the situation, or at least raising awareness of the issue.
- Road Condition – Council is to be congratulated for the much-improved condition of the road over recent years and there is need for a continuing coordinated response between Baw Baw Shire and South Gippsland Shire to ensure that it is kept in good and safe order for the increasing number of users. This includes maintenance of the pavement, appropriate signage and line-marking where required.

Request to Council: That Council consider funding and including the following activities in its 2019/20 budget:

- (i) planning or advocacy for the implementation of appropriate speed restrictions (80kmh or lower) on appropriate sections of the Grand Ridge Road, Leongatha-Yarragon Road and Warragul-Leongatha Road;
- (ii) an upgrade of safety advisory signage along the road to provide adequate warning of driving conditions;
- (iii) improved district signage for communities and promotion of tourism destinations; and
- (iv) planning in collaboration with Baw Baw Shire to ensure rapid response to required reactive maintenance activities and the development of a multi-year plan for consistent upgrade through planned maintenance and renewal activities.

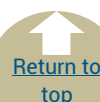
Yours sincerely,



Craig Kenny & Annie Lewis

Submission AB13 – John McCombe – South Gippsland Action Group - Growth for Rates Reduction and Growth for Reduced Rates to be considered for Exhibition and Equestrian Centre in Stony Creek.

Speaking to Submission - Yes



Mr John McCombe

24th. April, 2019
Chief Executive Officer,
South Gippsland Shire Council,
Private Bag 4,
Leongatha, Vic. 3953

SUBMISSION Under Section 223 of the Local Government Act 1989: Proposed 2019/20 Annual Budget and Revised Council Plan 2017-2021.

Dear Councillors,

I am making this submission on the advice of Kate Reiske (Acting Manager Infrastructure Planning) following consideration of my attached letter of 8th April, 2018, to Ian Murphy (Recreation Officer).

The intention is to ensure a contribution from South Gippsland Action (SCAG) is given due consideration before the current evaluation of the proposed Exhibition & Equestrian Centre (EECP) concludes. It is understood this is a somewhat late request – a situation that has arisen due to the SGSG plan 'Growth for Rates Reduction' GERR plan to create 'enclaves' of like-minded people. In this case it happens to be the equine fraternity.

The Stony Creek/Meeniyan area is the ideal location for the proposed centre & to that degree we fully support the work done by the SGEEC Working Party over many years. At this point in time there may be differences in the purpose, size & nature of the proposed facility. We tend to favour the 'Centre' primarily being an Equestrian Centre of National importance. – thus, making it the core attraction for the new property purchasers. That is not to be taken as we are ignoring the Exhibition/Events side of the venture – we may have a different way of factoring those aspects into the plan for the new centre.

Take note that aside from other factors, this location is perfect for night events – the lack of night entertainment in SGS is something often complained about. Show jumping springs to mind!

This is a project that will pull a huge amount of money into the Shire & assist with our plan to regain control over the level of the rate burden.

Do it once – do it right!

Think bigger!

I, John McCombe. Formally request to be heard in support of my submission, as per the South Gippsland Shire Council submission process as outlined in Section 223 of the Local Government Act 1989.

Yours sincerely,

Handwritten signature of John McCombe in blue ink.
John McCombe

For & on behalf of South Gippsland Action Group

Mr John McCombe

8 April 2019

Ian Murphy
Recreation Officer
South Gippsland Shire
Private Bag 4
LEONGATHA VIC 3953

Dear Mr Murphy

Exhibition & Equestrian Centre Proposal (EECP)

Following on from our meeting on Monday, 8 April 2019, I confirm South Gippsland Action Group (SGAG) does wish to have formal input for consideration, before recommendations are presented to Council in regard to both the location of the complex, and the functions of the facility.

We understand we are entering into this matter at a late stage, however, we have placed before Council a "Growth for Reduced Rates Plan" that, if adopted, has a direct impact on the EECP and vice versa. This plan - Growth for Reduced Rates (GfRR) - has the potential to add a whole new dimension to the project! To enable you to understand how the two marry together, I have attached the following:

- 'Growth for Reduced Rates' plan as presented to Council on 20 March 2019; and
- 'Petition Submission - Growth for Reduced Rates' dated 5 April 2019. This is affectively an Addendum to the original plan and is primarily about the potential of creating enclaves of like-minded property owners, such as 'horsey' types – as an arm of achieving the rapid population increase goal.

The 'enclave' concept is nothing new – it has proven to be very effective in the USA when built around a core like the proposed Equestrian Centre. In this particular instance, we should also take advantage of having the Stony Creek Racecourse there as well. The community would be unwise to lose that asset, which has been in slow decline for years now. Building the new complex and horse oriented community at Stony Creek will virtually guarantee the race club will again prosper. It may well regain its former 'training track' status. All in all, the SGS will prosper from this 'cluster' - new jobs will be created, both directly and indirectly, by the growth we envisage for the immediate Meeniyah/Stony Creek vicinity and beyond.

It is important for the Shire that the middle or lower end does not lose out on this opportunity to claim a major development, both from the point of view of perception and reality. Nyora, Poowong and Korumburra stand to benefit far more quickly than other towns in the shire, as the GfRR plan gains traction.

Furthermore, the Shire is committed to encouraging volunteers and to aid the retention thereof, with an acknowledgement that these people are essential to the running of all sorts of events throughout the Shire. It is a long standing practice and crucial for the running of the facilities under discussion here. It is contrary to this precedence if the volunteers who have been behind establishing this Equestrian Centre, in whatever form it takes at Stony Creek, for around 10 year, should be brushed aside and 'their project'

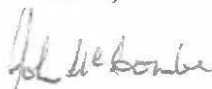
taken away from them. That is not the way we expect hard working constituents of this Shire to be treated. Without knowing the scope of the review currently being undertaken, I would assume it incorporates looking at potential '*return on investment*'. If that is so, how is a dollar value put on the worth of volunteers involved, now & into the future?

The point I am making here, is to our knowledge, no volunteer group from other locations under consideration has put up their hands. If that is the case, it considerably weakens the argument for establishing the Equestrian Centre at a location other than Stony Creek, especially when looked at through the prism of the "South Gippsland Shire Council Community Strengthening Strategy 2018-2022 – Supporting the Community and Volunteer Sector".

Do it once – do it right!

Please advise, in a reasonable time-frame, the course of action we need to take to ensure our viewpoint is given due consideration.

Yours faithfully



John McCombe

For & on behalf of South Gippsland Action Group

Ref. Petition Submission

5/4/2019

The Mayor
South Gippsland Shire
Private Bag 4
Leongatha 3953

Dear Mayor

Re: Submission of Petition – Growth for Reduced Rates

Following the presentation to Council on March 20 of the concept of a new direction in development for the Shire I decided to pursue the issue with the broader community – hence the petition.

The names on this petition were collected via a couple of hours on several days over the last week of March and the leg work being done by myself alone. I had limited time to invest in this but considered it an important concept and one that the Shire should really engage with.

The petition contains the names of 67 petitioners who have supported the concept of “Growth for Reduced Rates”. I think this small time commitment demonstrates that there is support for this idea. The petitioners live at various points within the Shire but are generally in the northern part of the Shire.

Since undertaking the presentation to Council on March 20, further work on an extension of this Growth concept has been undertaken. We would like to raise the issue of considering how the community can leverage of the Grants Applications and funding inputs into the Shire. Council has supported the concept of an Equestrian Facility at Stony Creek and has some work underway to further develop that Concept. Council may not be aware of it but the City of Casey have identified and planned for some areas for particular industries. One such industry is Dog Breeding – they have within their Planning Scheme allocated 2 areas for dogs and allowed subdivisions to a 2 hectare size. They have created an area near Pearcedale and a further area at Devon Meadows .

If Council were to extend this concept to the Stony Creek and Meeniyan areas and adopt zoning to suit the creation of small lot sizes to accommodate horse owners then they could create a “horse friendly” enclave. At present there are

a number of farms basically between Meeniyan and Stony Creek which could be rezoned to create this enclave. There is an area of around 200 hectares which could be incorporated into an enclave and create possibly 50 to 80 small lots.

Not only would this enhance the growth prospects it would also support an equestrian facility at Stony Creek. Extra horses into the area may also lead to the return of a "training facility" to the Stony Creek racecourse. This all leads to greater economic activity in the Shire.

The Economic Development and Planning Departments may be able to build on other activities in the Shire to create other areas. These could be areas which do not really take areas of productive farm land out of the farming resource and hence could be considered as not threatening the Farm Zone. The area around Fish Creek could possibly be developed with a food interest to work with the current cheese farm, winery and cidery in the area – all of which work with the tourists. There is also discussion of the Walking Trail out of Fish Creek which would work with this concept.

In reflecting on the "Dormitory" town concept it would require the Council to work hard on the advocacy for better public transport links to Cranbourne and Pakenham. Perhaps the VLine buses should have bikes carriers fitted forward and aft as they operate overseas. Buses in Seattle can carry 2 bikes mounted in front of the windscreen. This system would allow residents in Nyora/Loch and Korumburra to ride to the Bus and then to ride to a work destination if they are not further commuting from Cranbourne or Pakenham.

Council will need to start planning for extra Civic facilities at Nyora if growth is to be boosted in that town. A child care/maternal health facility may be required along with some other open space reserves and an improved Public Hall. Improvements in the civil works around this town should also be considered such as a more extensive footpath system and an extra crossing of the rail line say at Henley St.

This "Growth for Reduced Rates" concept can be further explored by the Council and the community. Identifying the demand in particular sectors and the constraints on servicing that demand should be an early area for Shire research. We urge the Council to adopt suitable motions to create the environment for this Shire to make a jump in development activity and to adopt a mindset which will facilitate such energetic growth.

As explained in the March 20 presentation, this Council needs to enable a growth spurt so that we maintain our relevance to other areas of governance and in our comparison with our neighbours, especially Baw Baw and Bass Coast Shires. It should also be remembered that the State Government has committed a large amount of funds to Latrobe City.

This community can offer an outlet for some of the growth for Melbourne. At present the Shire is riding on the back of work done some 60 years past. That is how long we have had Venus Bay, Sandy Point and Walkerville. What substantial developments have we encouraged in more recent times. Steady as she goes will not do. The Shire needs to be more pro-active. Do not let personal quarrels deter the developments – adopt a broader mindset.

If I can get 67 petitioners with a couple of hours of leg work it should be possible for this Shire to move and capitalise on this “Growth for Reduced Rates”

Yours faithfully

Lindsay Love

CC.

Cr Ray Argento

Cr Aaron Brown

Cr Rosemary Cousin

Cr Don Hill

Cr Andrew McEwen

Cr Jeremy Rich

Cr Alyson Skinner

Attachments

1. Petition
2. Stony Creek Exhibition and Equestrian Centre

STONY CREEK EXHIBITION & EQUESTRIAN CENTRE PROPOSAL

. This proposal has been kicked around for 10+ years.

.We are looking at re-energising the Equestrian Centre project as the catalyst for population growth in the Stony Creek – Meeniyana area & thereby adding another string to the GfRR bow.

.Numerous feasibility etc. studies have been undertaken. Detailed plans for the construction have been drawn up.

. In May 2018 council parked the project, by determining other possible alternative sites had to be investigated. This was at the instigation of Cr. Brunt – she wanted it at either Nyora or Korumburra. A review is under-way & is to be finalised in June 2019. To my knowledge no other site has emerged & no alternative volunteer group has put their hand up.

. Maybe SGAG should be making our own submission.

.Council clearly wants a multi-purpose undercover facility. (Ref. Mayor's Message, 2017 by Ray Argento) & this is the preferred option for the 'SCEE centre proposal Working party' as well (Cattle interests). How the project morphed into a multi-use Exhibition Centre requires clarification – according to Janine Bullock it came from the working party, rather than from Council. Debra Collins, (another activist & Corner Inlet Citizen of the Year, 2017) indicated it was pressure from Council.

.LL has had a quick look at what might be achieved & there is a sewerage plant at Stony Creek servicing Meeniyana (& most probably the Racecourse – but not the Stony Creek hamlet.

.Our broad brush concept is to develop a horse industry focused residential precinct based on the presence of the Racecourse & the proposed Equestrian Centre & supported by nearby Meeniyana (2-3kms). Stony Creek hamlet is a cluster of approx. 40 houses, with little supporting infrastructure or facilities. Maybe, to develop a 'New Stony Creek' township is the way to go.

Consultation with the existing SC community is necessary to get a feel for what they might want.

.Personally, I would drop the concept of the Equestrian Centre being a multi-use undercover facility. It needs to be a Horse Event dedicated complex of the highest standard, to not only cater to locals, but also to be a suitable venue for State & National competitions. Believe me such a complex would be fully utilized & is incompatible with the likes of Farmers Markets etc. We already have within our shire, riders & judges of International standard. This would entail taking the Equestrian Centre proposal back to its roots: Ref.'SGSC Cluster Review for social community infrastructure, 2015' – "....The Stony Creek Reserve Committee is proposing an equestrian centre comparable to the Werribee Centre.....". The sort of 'cluster community' we have in mind has worked extremely well in the U.S.A.

.Perhaps, an additional covered complex nearby would work for the multi-function aspect, in the sense there could be some shared facilities, like parking. Bear in mind, parking for horse-rigs will need to be quite extensive. They are not cars! I am familiar with the currently proposed site & don't believe it is large enough for the new complex. It might be best left to be used as it is now – Trainer parking on race-days & the home of Meenyan/Stony Creek Pony Club. The addition of a minimalist roofed structure of suitable dimensions would be a valuable addition as an Exercise Yard on race days & be an additional arena for Pony Club use. This area then makes an ideal location for a Farmers Market – especially so, because it would be visible from the Hwy & have power, water & toilets.

.An oil company might be interested in opening a Service Station in the area – especially with the extra traffic that will be attracted. It may be a deciding factor that vehicles will be stopping in the vicinity for other reasons.

.The current site has straight-forward access to Melbourne & is at an intersection that's the shortest route to La Trobe Valley (via Dollar/Dumbalk).

.Advocating for the development of this Stony Creek/Meenyan precinct only confirms SGAG & the GfRR concept/strategy plan is not Leongatha/Korumburra centric.

Submission AB14 – **Fred Weight** - 24 hour Boat Launching Facilities at 'The Landing' on Stockyard Creek

Speaking to Submission - Yes



Submission

To

South Gippsland Council

about

Boating Facilities in Foster



Author of this submission:

This submission has been prepared and presented by:

Name: Fred Weight

(Many more people are intensely interested in this matter but it is agreed that this approach is simpler. More people can be involved very easily.)

Preamble:

In May 2015, I retired to Foster to enjoy the cooler weather and the delightful amenity of South Gippsland. I also had intention to enjoy recreational fishing.

In discussion with local people, I found dissatisfaction with the fact that 24 hour boat launch was only available at considerable distance from Foster and even then is limited by such things as cost and crowding. While other boat launch options are available, they could not be described as ideal.

The boat ramp that does exist in Foster at "The Landing" is only available over high tide and is very run down.

The Gippsland Coastal Board publication "Gippsland Boating Coastal Action Plan 2013" is "A Strategic framework for recreational boating in Gippsland". Included within the main objectives identified in this Action Plan are:

- Boating and local communities
- Competition between users
- The adequacy of current facilities,

Also, the Strategic directions identified seek to ensure that recreational boating facilities in the Gippsland region include that:

- They are supported by appropriate onshore facilities
- They do not impact adversely on the natural environment
- They can be maintained effectively and efficiently.

If the 2013 Boating Coastal Action Plan is more than just a political statement and has real purpose and intention, then the situation at Foster provides an excellent opportunity to make real advance within this action plan. In this action plan, there is a presumption that facilities should be provided.

Outlined below is one possible development of the Foster situation which would not only be driven by the Action Plan but would provide the people and district of Foster with enhanced recreational and economic opportunity.



Objectives and Purpose of This Submission:

Purpose:

The South Gippsland Council is hereby requested to develop, refurbish and extend the boat launch facilities at the area known as “The Landing” on Stockyard Creek near Foster on similar lines to the development outlined below. It is further requested that, as manager of the development, the Council source all necessary funds, approvals and similar matters in such a manner as to allow this development to proceed as quickly as possible so that the facilities may be enjoyed by the public.

The major objectives of this submission:

- To improve the opportunity for recreational use of Corner Inlet in the Foster area.
- To upgrade current boat launch conditions so that they provide,
 - 24 hour boat launch opportunity
 - Greater efficiency of use
 - Increased safety and access for all users
 - Capacity for use by disabled persons
 - Provision for launch of non-powered craft such as canoes.
 - Recognition and advancement of environmental and cultural heritage of indigenous peoples.
 - Recognition and advancement of the environment, particularly with reference to the international Ramsar convention on wetlands.
 - Other provisions that are driven by the Action Plan.
 - Such activities as search and rescue, water police and environmental management at the western end of Corner Inlet, would be enhanced.
- To enhance the economic and recreational status of the Foster area.

Developmental Plan

A little background:

“The Landing” is downstream of Foster on Stockyard Creek which flows through Foster. Back in the 1860’s when gold was discovered in Stockyard Creek at the site where Foster stands, it was very difficult to reach the gold site overland.

An enterprising steamboat operator from Port Albert started a service bringing goods and passengers to the landing which was as far up Stockyard Creek as he could get. Passengers still had several kilometres to “bushbash” on to the diggings.

The Government built a wharf at the site. Hotels, houses and shops were built. As road and rail access improved from the north the entire enterprise fell into decay and declined.



Little remains but old jetties and history. The site is now a heritage site.

There is a rudimentary concrete launching ramp which can only be used for a few hours over the high tide period. This ramp is about 1.5 km from the entrance into Corner Inlet. The ramp seems to have been built near where the Government wharf was located. This was never an ideal site.

It is not ideal for recreational craft as it is 1.5km from the Inlet and being so far up stream, it means even more limited times of usage.

About the site:

1. The end of the current access road is where the current ramp is located.
2. Along the northern boundary of the site there is a shallow surface water drain. Close to the northern bank of the creek is a levee bank. Between these two is a strip of land which would easily accommodate a two-way track or road at least as far as the higher basin. Vehicles already access this area.
3. About half way down to the Inlet, this roadway makes a right-hand turn. If it did not, it would enter a tongue of land from the farmer's paddock.
4. Precisely at this point there is a large S bend in the Creek. At each of these two bends a large basin has developed.
5. The higher of the two basins at this point would make an ideal location for a new full time ramp.
6. The northern side of the creek is almost denuded of vegetation whether native or introduced so development would make little impact. The site is ideal for this development.

Such a development as this would be simple enough to undertake. Since the gold mining and probably because of it, this lower part of the watercourse may need to be dredged a little to restore its former capacity, but this should not be extensive. It is very likely that this lower section may need no dredging at all.

It is noted that the "Victorian Recreational Fishing Guide" advertises a Target of One Million people to be involved in recreational fishing. This project would support that initiative.



Suggested works required for this project:

1. Form a simple two-way roadway to the upper basin (about 500 metres) with a one-way loop at the end to access the launch ramp and turn around.
2. Acquire about one hectare of land adjacent to the upper basin. (There are advantages for the land owner as his property value would be enhanced by having direct access to this facility at his back gate.)
3. Re-align the shallow drain to follow the northern and eastern boundaries of the acquired land and then to re-join the original course. Back-fill redundant drain.
4. Build the roadway as a one-way loop to access the boat ramp, trailer parking and a turn-around in the acquired land area.
5. Establish boat trailer parking on the acquired land accessed from the looped road.
6. Build an appropriate boat-ramp in the open basin at the northern end. Deepen and enlarge the basin if required. If considered necessary, extend the width a little to accommodate wharf/jetties.
7. On the eastern bank of the basin build a wharf or several jetties to enhance boat launch and retrieval.
8. Provide a suitable toilet.
9. Provide solar lighting.
10. Refurbish the original boat-ramp area to provide launch opportunities for non-powered vessels such as canoes. (These could cope with low tides much more easily and the need for dredging would appear unlikely.)
 - a. Extend the length of the existing ramp to allow portage of non-powered vessels to the water for launch at lower tides.
 - b. Deepen the bottom of the creek at the ramp to allow a basin of water for easier launch.
 - c. Dedicate this launch area to non-powered vessels.



Maps:



Aerial photo of lower reaches of Stockyard Creek from the current boat ramp to the entrance into Corner Inlet. (About 1.5 km.)

It seems likely that any depth limitation in the creek would be concentrated in the section of the creek above the upper basin in the S bend.

To by-pass the upper section could eliminate any requirement for dredging.

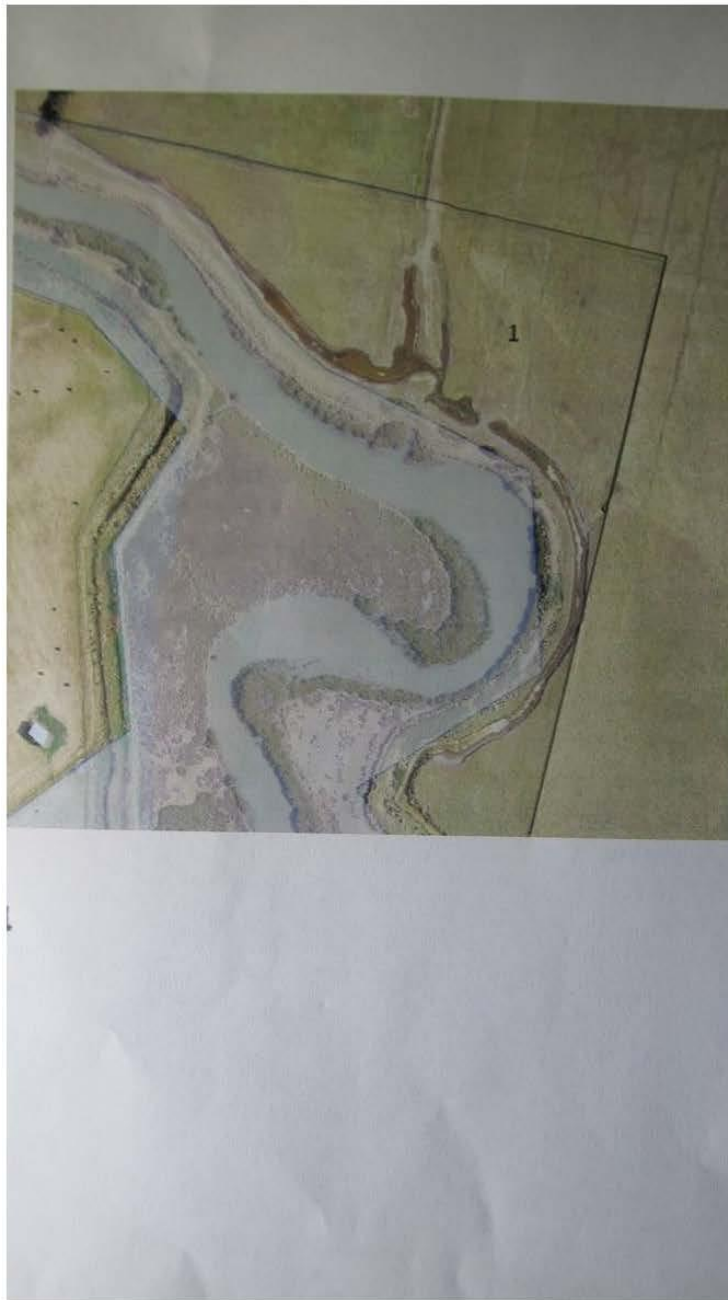
Dredging would seem unnecessary for un-powered vessels using the upper section.



Aerial photo of site:

On this map can be seen:

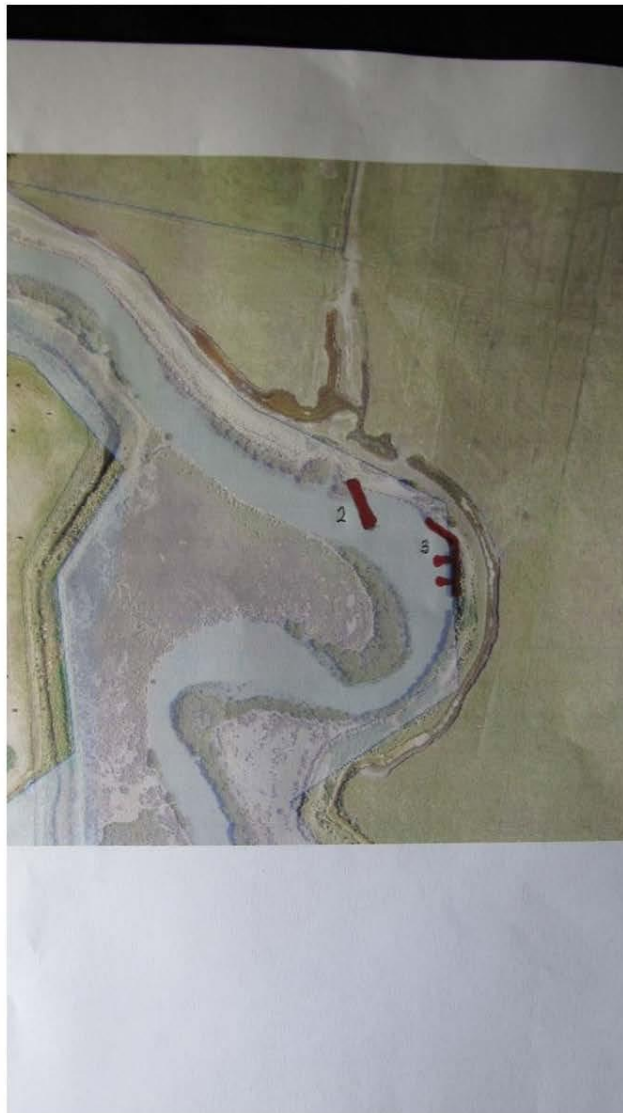
- The surface drain.
- The strip of land that could become the roadway.
- The two large basins at the head of the downstream deeper part of the creek.
- The area of land just north of the upper basin which would need to be acquired.
- The site of the current boat-ramp. (about 500m upstream from the upper basin)



Map of site showing proposed land to acquire.



Map re-aligned drain and one-way loop roadway.



Map showing proposed boat ramp and wharf/jetties.

This submission is made on behalf of the community of Foster and district. It is felt by many that such a development would create very desirable recreational and economic benefits.

Signed:

Fred Weight.
(Action Co-ordinator.)



SUBMISSION TO SOUTH GIPPSLAND COUNCIL

By Fred Weight 16th April 2018.

Subject:

The establishment and maintenance of 24 hour boat launch facilities in the tidal section of Stockyard Creek at Foster. The area is known as "The Landing".

In presenting this submission, I am requesting that the South Gippsland Council assume management responsibility and develop, refurbish and extend the boat launch facilities at the area known as "The Landing" on Stockyard Creek near Foster, and that this be done on similar lines to the development outlined in my submission, copies of which, you have already received.

It is further requested that, as manager of the development, the Council source all necessary funds, approvals and similar matters, in such a manner as to allow this development to proceed as quickly as possible, so that the facilities may be enjoyed by the public.

What is involved?

There already exists a concrete boat-ramp at The Landing. However, it is rundown, inadequate except at high tide and was built in the wrong place! In the 1860's, the steamboat captain who brought diggers to the Foster goldfield was only interested in getting as close to the diggings as was possible. Even then the diggers had to "bush-bash" through thick scrub a further three or four kilometres to the diggings.

At that time, it did not matter that the site was only accessible at high tide, so that is where the government built a wharf and the focus was on that point. Until now, the focus seems to have remained on that point.

Change that focus and.

By building a new facility at a site downstream, much closer to Corner inlet, everything changes.

About half way to Corner Inlet from the existing ramp, Stockyard Creek reaches the western edge of the tidal flats and from this point there is no gradient to the Inlet. This should eliminate any need for dredging.

There is gradient in the section of Stockyard Creek upstream from there, to the existing ramp. That could still be negotiated by unpowered vessels such as canoes and would be satisfactory for that purpose, even if it were not 24 hour capability.



Also at this point Stockyard Creek makes a large “S” bend forming two large basins. The higher of these two basins presents an ideal location for the construction of a new ramp.

Once a decision is taken to build such a facility, other matters such as road access, trailer parking, and launching site become straight forward.

In my submission, I have given a clear description of the site and how it lends itself to this development in an easily achieved manner.

Also in my submission, I have given a clear outline of the typical works which would be required. Local contractors would benefit from undertaking these works. Construction works should not provide any unique problems.

It is noted that: The Gippsland Coastal Board publication “Gippsland Boating Coastal Action Plan 2013” “A Strategic framework for recreational boating in Gippsland”,

states that, the vision for recreational boating in Gippsland is:

Recreational boating in the coastal areas and waterways of the Gippsland Coastal Board region will be able to be enjoyed safely by users of all abilities. Site appropriate and well-maintained infrastructure will provide facilities and destinations for a wide range of recreational boating activities in harmony with the natural attractions of the region.

It is also noted, that the “Victorian Recreational Fishing Guide” advertises a Target of One Million people to be involved in recreational fishing. This project would support that initiative.

An important consideration also, is that, to develop this facility as I have indicated in my submission would significantly enhance recreational and economic options for the community.

Further Considerations:



We are all aware that there are aspects that are more complex in such a development.

Environmental degradation – wave action from boat movement – turbulence from propellers – damage to the benthos. (These matters can usually be well managed with regulations.)

The overall cost could be extensive and would need to be sourced.

There would need to be compliances with such as

- The Ramsar wetlands convention

- Indigenous culture and heritage issues

- Safety issues

- Provision for people with disabilities.

All year round management could be complex.

My submission to Council is not without significant complexity.

In Conclusion:

I simply make the request that Council assume management and seriously examine the feasibility of this project with a view to implementation as soon as possible.

Submission AB15 – Shirley Cowling – Jumbunna Public Hall Committee - Sealing Jumbunna Hall Car Park

Speaking to Submission - Yes

[Return to top](#)



Jumbunna Coal Mining
ABN 17954104232

JUMBUNNA PUBLIC HALL Inc.
A001891K
Secretary Andrea Marshall
President Brian Enbom



Township 1902

South Gippsland Shire Council
Chief Executive Office
Attention Tim Tamlin

25th April 2019

Dear Tim,

Re: Proposed Annual Budget for 2019-2020 /sealing of the area in front of the Jumbunna Hall

I am writing to you on behalf of the Jumbunna Public Hall Committee, following their various meetings, during which they have expressed their concerns for the area in front of the hall (which is the only access area) as well as a subsequent meeting with the president Brian Enbom and Tony Peterson the Project Engineer, at the Shire. Tony has inspected the site and so have various councillors who advised that we needed to forward a submission for the budget.

I have attached to the email various photos of the site concerned which illustrates the slope of the land, (and also highlights the depth of the bitumen following repeated layers of bitumen) which, with the combination of the screening surface and reversing from a stationery position causes many of the drivers to spin their wheels. It also creates a very unstable surface for patrons with walkers, so much so that we have received a letter, asking if we could do something about the area concerned, and have attached a copy accordingly.

Also I will forward to you a scanned recent petition from locals and the neighbouring area, who visit the hall at a later date, as I am having trouble getting my scanner to work.

We believe that the project, the area in front of hall on public land sealed and treated in a manner that makes the area safe for public use is likely to cost \$30,000 - \$40,000. We therefore request that this project (our submission) be considered for the Revised Council Plan 2017-2021, and included in the Proposed Annual Budget for 2019-2020.

Yours sincerely

Shirley Cowling (on behalf of Brian Enbom)



Sadie M.Jansen.

16th April 2019

Jumbunna Hall Committee,
Cruickshanks Road
Jumbunna 3951

Dear Members of the Jumbunna Hall Committee,

Re: Access at the Jumbunna Hall

I have frequented your market at the hall for which I understand raises funds to improve the hall, however I am writing to you to advise that it would be appreciated by myself (and no doubt other patrons of the market) if the access could be improved.

I have found it difficult (and I am sure others do also) to park at the hall, especially after recovering from a hip operation, to both reverse out of the area on the sloping ground with blue stone metal- gravel which causes the wheels of the car to spin when trying to reverse. Not only is it difficult to park, however the stones create a problem with walkers trying to access the entrance. Have you considered asking the Shire to bitumen the area concerned as it would vastly improve parking and access for all patrons.

While commending the efforts of the hardworking kitchen volunteers surely to improve the access would increase the numbers of attendees, and the money raised if this concern of mine was addressed.

Thank you for taking the time to read this concern of mine.

Yours sincerely

A handwritten signature in black ink that reads "S Jansen".

Sadie M. Jansen





Please note:

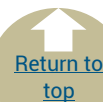
A petition to support this submission was prepared during the public exhibition period and delivered to the Council on 27 April 2019. As it was received after the closing date, it is proposed they be presented at the Special Meeting of Council on 29 May 2019 for Council to resolve it needs to be tabled and dealt with as an attachment to the respective submission. Clause 102 (b) of Local Law No.3 2010, allows the Council to deal with a petition earlier than the next Ordinary Meeting as follows:

"Clause 102(b) A petition or joint letter presented to the Council must lay on the table until the next ordinary meeting of the Council and no motion, other than to receive the petition or joint letter, may be accepted by the Chair unless the Council agrees to deal with it earlier."

As the next Ordinary Meeting, will be held after the Special Meeting to 'consider and decide' on submissions, it is recommended the petition be brought to the Special Meeting to be considered with Shirley Cowling's Proposed Annual Budget submission.

The petition prayer *"Request the Shire to include in their budget to bitumen the roadside outside the Jumbunna Hall to make it safe for vehicles to park and reverse safely to enter the roadway, while improving the area for all abilities"*. This had 140 signatories, with 136 within the South Gippsland Shire (Shire) and 4 outside of the Shire.

Submission AB16 – Paul Katsieris – Walkerville Rate Payers and Residents Association - Acacia Way, Walkerville Path and Sealing Walkerville South Road and Drainage



Speaking to Submission - Yes

WALKERVILLE RATEPAYERS AND RESIDENTS ASSOCIATION INC.

Registered Number: A31312T

Hon. President: Paul Katsieris Hon. Treasurer: Irene Irvine Hon. Secretary: Anne Terrell

24.04.2019

Att: Mr Tim Tamlin
Chief Executive Officer
South Gippsland Shire Council
9 Smith Street
Leongatha VIC 3953

via email: submission@southgippsland.vic.gov.au

Dear Mr Tamlin,

Submission (Section 223) – South Gippsland Shire Council Proposed Annual Budget 2019–20 and inclusion of proposals for funding towards:

1. The further investigation and construction of the 'Acacia Way' Pedestrian Safety Path along Acacia Road, Walkerville;
- and,
2. the sealing of the gravel section of roadway along Walkerville South Road, Walkerville South and the upgrading of the roadway drainage system for same.

I write to you on behalf of the Walkerville Ratepayers and Residents Association (WRRRA); an incorporated organisation representing the community of Walkerville and surrounding areas. The membership of the WRRRA is derived from the areas of Walkerville North, Walkerville South, the Promontory Views Estate and surrounding farmland.

The WRRRA would like to make a formal written submission under Section 223 of the Local Government Act 1989 regarding the South Gippsland Shire Council's **Proposed Annual Budget 2019–20** (the Budget). The WRRRA's submission is comprised of this letter and Attachments 1 and 2.



Proposed SGSC Annual Budget 2019–20

The WRRRA notes the proposed Budget contains a number of capital works expenditure items including the allocation of funding towards proposed new and upgraded path and road infrastructure.

In relation to the proposed Budget, the WRRRA respectfully request that Council consider this submission for funding in order to:

- (a) construct a new pedestrian safety path along Acacia Road, Walkerville (Promontory Views Estate). We note this pathway is one that has been recommended for construction in the council's adopted *Paths and Trails Strategy 2018* and is referred to as 'Acacia Way' in this document;
- (b) seal the gravel section of road at Walkerville South Road, South Walkerville and improve the roadside drainage;
- (c) include funding for these works (a) and/or (b) above, in the adopted SGSC Annual Budget for 2019–20.

A 'ACACIA WAY' PEDESTRIAN SAFETY PATH ALONG ACACIA ROAD, WALKERVILLE

'Acacia Way' is a proposed pedestrian pathway included in the council's adopted **Paths and Trails Strategy 2018**. It is nominated as a pathway project recommended for further investigation. (Refer *SGSC Paths and Trails Strategy 2018 pp. 43–44 and Appendix 1, Table 9.1.1*)

Following our Section 223 submissions made in 2016 regarding this proposed pathway, the WRRRA and the broader community remain concerned at the increasing numbers of pedestrians and increasing numbers of vehicular traffic along the stretch of Acacia Road east of the Promontory Views Estate. This stretch of Acacia Road remains unsafe for pedestrians and is becoming increasingly unsafe. Our community would like to see the proposed 'Acacia Way' pedestrian safety path constructed on the eastern side of Acacia Road as soon as possible.

Budget Submission 1:

We respectfully request that SGSC approve the funding of further investigation of and construction of the 'Acacia Way' in council's Annual Budget for 2019–20.

B SEALING OF GRAVEL ROAD AND ROADSIDE DRAINAGE SYSTEM UPGRADE OF WALKERVILLE SOUTH ROAD, WALKERVILLE

The WRRRA and members of our community have become concerned at the deterioration of the gravel road section of Walkerville South Road and the increasing erosion impacts such a deterioration is presenting to the cliffside edges of the roadway. This is particularly so on the winding section of Walkerville South Road as it descends steeply to Walkerville South Beach.

The increasing popularity of Walkerville South Beach as a holiday destination and access to the Walkerville South beach access ramp for boat launching and retrieval has resulted in an increase of vehicular and heavy-vehicle traffic on Walkerville South Road. This is accelerating the deterioration of the gravel roadway, the roadside verges and the fragile cliff-edges of the coastline. In addition, the lack of regular rain over recent months has meant a further decay of the gravel roadway surface as there has been insufficient water to bind the gravel appropriately.



With future climate change impacts, when it does indeed rain, the rain will increasingly arrive as significant storm events which cause washout and further erosion of the gravel road. The existing form of rude drainage channels cut to the side of the roadway are poor quality and inadequate form of drainage that also needs to be upgraded alongside any sealing of the roadway as a long term protection of the Walkerville South Road coastline.

We also note that increasing numbers of vehicles are parking alongside the winding roadway alongside the cliff-edge during the longer, busy periods of the year. The narrowness of the existing roadway and the need for vehicles to park on the very edge of the cliff-face is damaging the edges of the unsealed road and causing further damage to a series of rude open stormwater water drainage channels cut into the cliffside edge of the road. The existing situation is becoming increasingly untenable on what is a spectacularly beautiful but very fragile section of Walkerville's coastline.

The WRRRA understand that the SGSC is currently developing a 'Gravel-to-Seal' program of capital works. We further understand that the sealing of Walkerville South Road has been identified as a priority project, albeit currently unfunded, by relevant council officers and the WRRRA would certainly support Council's endeavours to seal the road and improve the roadway drainage system even if it is a staged project over time.

Budget submission 2:

We respectfully request that SGSC approve the funding of the sealing of the gravel roadway and the upgrading of the roadside drainage system on the gravel section of South Walkerville Road, Walkerville South in council's Annual Budget for 2019-20.

Presentation to Council

The WRRRA would welcome an opportunity to address the Council regarding this S223 submission at an open hearing of council at the appropriate time. Please let the undersigned know when this may occur.

Yours Sincerely,

A handwritten signature in black ink that reads "Paul Katsieris".

Paul Katsieris
Hon. President
Walkerville Ratepayers and Residents Association Inc.

Attachments:

Attachment 1 – Site Plan: Acacia Road Pedestrian Safety Path ('Acacia Way')
Attachment 2 – Aerial Photograph: Walkerville South Road – Indicative gravel-to-seal extent

Submission AB17 – Ralph Gallagher - Submitter has multiple questions with respect to the Proposed 2019/20 Annual Budget.



Speaking to Submission -Yes

To:	Chief Executive Officer, Shire of South Gippsland
From:	Ralph Gallagher
Date:	Friday, 26 April 2019
Please note that I would appreciate the opportunity to speak in support of this submission at the meeting proposed for this purpose on Wednesday, 22 May 2019.	

1. Preamble

The budget for the Shire undoubtedly requires a substantial contribution by many folk and for that reason should be accorded due respect. It was originally intended to ensure specific services for a geographically disparate community. Socially disparate as well.

The budget must of course be constructed within the context of a rates system, a fees for service schedule and grants opportunities that generate funding.

Realistically funds available will fall short of that necessary to support everyone's "field of dreams". We should all acknowledge this constraint. Some comments reflecting my concerns follow.

2. Budget Surplus

There have been three occasions over the last seven months or so when individual Councillors have declared the financial position to be positively rosy. The first claim was that the Shire had achieved a surplus (to date) of \$26 million. The second claim touted a surplus of \$28 million and the last claim I heard announced the utopian position of a \$30 million surplus.

I asked about the surplus of \$26 million and the answer firstly reduced the figure to \$23 million but failed to provide all the details of the components. I also asked whether the Councillor's comment (publicly done as it was) had been corrected. No response.

There is no reasonable position that justifies the holding or more importantly the accreting of such a sum. How was it done? Why was it done? Excessive rates? Over budgeted projects? If the claims were incorrect why weren't the statements publicly corrected?

3. Capital Works

The provision for “roads” is excessive as a single budget year provision. There is no doubt that the Shire’s program has been inadequate but the attempt to resolve all this overnight is a poor financial decision. Such substantial works should be spread over several budget year cycles.

The Mirboo North Pool project also warrants a further review. The total is now many hundreds of thousands of dollars more than estimated at its first listing as a putative project. Are there no opportunities for a reduced provision? What are the expected operating costs, fees income for the facility?

The budget also includes more than \$7 million for projects that are subject to grants funding. What happens if that funding does not eventuate? Why are such projects listed as part of the budget if grants funding is not yet assured?

4. Commercial Enterprises

Once again Council fails to provide adequate operating statements of commercial enterprises such as the caravan parks. The existing arrangements have been in place for some years now and yet “no adequate reports” have been forthcoming. Whilst not strictly a commercial enterprise the costs associated with the equipping, maintenance and otherwise operating the Franklin Reserve free caravan site should also be detailed.

5. Shared Services

This issue has been canvassed over several years now and finally seems to have found support with some Councillors. The one example that existed (with the Shire of Baw Baw) has apparently lapsed. To proceed further there must be sufficient resources (personnel, funds, philosophical) to support the development of a feasible model. It is appropriate to acknowledge, at the outset that the longer term gain will require an immediate term investment by all (prospective) involved Shires and Councils. Has this been achieved?

6. Conclusion

I look forward to the opportunity to speak to the foregoing comments and to responding to any questions that arise.

Ralph Gallagher

Submission AB18 – Ross Barnacle (President) Loch Community Development Association - There is a list of works that should be commenced ahead of any planned streetscape works in Loch.



Speaking to Submission - Yes



LochVillage
www.lochvillage.com

Reg No: A0037749K

ABN: 68 373 195 626

Chief Executive Officer
South Gippsland Shire Council
submission@southgippsland.vic.gov.au

SUBMISSION TO SOUTH GIPPSLAND SHIRE COUNCIL

REVISED COUNCIL PLAN 2017-2021

PROPOSED ANNUAL BUDGET 2019 - 2020

Following community consultation and the formation of the Loch Village Projects Working Group, a sub-committee of the Loch Community Development Association (LCDA), this submission outlines areas of priority the Loch community believe will significantly enhance the liveability and strengthen Loch's place as the gateway to tourism and the reputation as a garden and heritage village within the South Gippsland region.

The Loch Village Projects Working Group has a vision to maintain and enhance the atmosphere and character of Loch as a unique historic, desirable garden village with a fabric of heritage buildings, which is renowned for its arts, craft, antiques and quality foods.

The Loch Village Projects Working Group notes the following points which were previously mentioned in the plan and budget:

Infrastructure:

"community requests the building of footpaths, so that one can get from place to place more safely"

**Objective Overview:**

"The unique character of our smaller towns is recognised and supported"

Services:

Footpaths & Bicycle Paths

Successful Outcomes:

1. Existing rail trails promoted and new trails developed to support growth to our economy, enable a healthier lifestyle and enhance wildlife corridors.
2. Footpath & Bicycle Paths

There is no mention of footpaths/trails/bicycle paths for Loch within the 2019-20 Budget.

With the Stage 1 Streetscape works due to commence in Loch imminently, this submission requests the following paths be prioritised and brought forward ahead of later Streetscape stages and included within the 2019-20 budget. Loch needs to be pedestrian friendly; this is an occupational health & safety issue.

a). Victoria Road:	North side from Post Office/Centennial Park to Catholic Church.	
	212 lm x \$180 lm	\$38,160.00
b). Smith Street:	Cnr. of Victoria St to Queen Street	
	88 lm x \$180 lm	\$15,840.00

In addition, the following are requested:

1. Western-end Avenue of Honour trees - to be included in the council maintenance plan, including the replacement of two.
2. Eastern-end Avenue of Honour trees - source and plant American stock of Plane trees, to mirror western-end planting, and inclusion in the council maintenance plan.
3. Explore vacant land from Smith/Speight/Queen intersection, along Speight St towards Albert Rd (adjacent to the Vic Roads sound wall) with a view to levelling, where required, and tree planting, providing much needed additional and shaded car parking during festivals and summer markets, and inclusion in council maintenance plan.
4. Council to address issues with drainage and storm water in the vicinity of Queen St and Albert Rd.
5. Council consultation with the Loch Village Projects Working Group regarding choice of trees which will replace those recently removed in Victoria Rd, with agreed trees planted in 2019.
6. Planning for lighting, public gardens, seating and trees for Stage 1.
7. Consider pedestrian crossing in Victoria Rd in Stage 1 Streetscape works.
8. Consider an Arts/Heritage Plan for Loch, including a register of Heritage buildings, trees, etc that are protected.
9. Council to liaise with Loch Primary School and Department of Education to develop an effective traffic management plan.



10. Fixed signage at both highway entry points to Loch that allows community groups to promote events, as exists at the entry to other South Gippsland towns.
11. Entry garden and tree planting on the western highway entrance that befits and underpins the garden village theme.
12. Council consultation with the Loch Village Projects Working Group regarding progressing discussions and the execution of the 'Loch Lap' initiative.

It is noted, under Capital Works /Other Structures/93060 PLAYGROUNDS in the proposed annual budget 2019/20, there is a replacement program for the Speight St, Loch playground. With the existing playground in good order, the funding for the capital works would be better spent on the Loch lap.

Conclusion:

The proposals outlined above are in keeping with the **South Gippsland Planning scheme 11/04/2019** which states Loch is a "Small thriving rural township with moderate capacity for growth in the future. A compact, 'garden village' and heritage character with tourism retail facilities set among rolling hills.

The following are **key components of the South Gippsland Planning Scheme for Loch**, with the measures above aligning to the Shires plan.

Loch's role and function is:

Small thriving rural township with moderate capacity for growth in the future. A compact garden village and heritage character with tourism retail facilities set amongst rolling hills.

Local area implementation:

- Promote the use and development of land in accordance with the strategic direction in the Loch Framework Plan
- Develop Loch as a small thriving rural township with a distinctive garden village character

Economy:

- Consolidate and develop the town centre as the preferred focus for all business, community and tourist services and facilities
- Encourage tourist services and facilities in the township

Landscape and built form:

- Retain the existing heritage character, design and built form of the buildings along Victoria Street and Smith Street (north of Victoria Street), in recognition of their contribution to the overall image of Loch
- Conserve and enhance heritage places in the town in recognition of their contribution to the overall character of Loch
- Promote the distinctive garden village character in Loch
- Create an integrated network of shared pedestrian and bicycle paths linking features and facilities in and around the township



Infrastructure:

- Improve community services and facilities in the township
- Ensure the new growth and development occurs in coordination with the provisions of development infrastructure
- Consider the requirement for new or improved public infrastructure and how infrastructure is to be provided /funded when land is rezoned for residential development
- Require new developments to connect to the reticulated sewerage system
- Create an integrated network of shared pedestrian and bicycle paths linking features and facilities in and around the township

The LCDA request the opportunity to present this submission to Council at the forthcoming open hearing on May 22nd 2019, to ensure an equitable distribution of funds that includes Loch Village.

Yours faithfully

Ron Barnacle
President
Loch Community Development Association

25th April 2019

