



South Gippsland
Shire Council

South Gippsland Shire Council News

Australia Day Photography Competition

South Gippsland Shire Council is once again running an Australia Day Photography Competition.

The theme this year is **Australia Day: South Gippsland – Our Home**. Images must be taken within South Gippsland Shire or nearby. Entrants can interpret the theme however they choose, and entries are welcome from any South Gippsland resident or ratepayer.

There are two prize categories - an open category with a \$500 prize and a junior category (15 and under) with a \$300 prize.

Submitted images will not be used by Council outside of the

competition.

The Australia Day Photography Competition is funded by the National Australia Day Council.

To find out more about the South Gippsland Australia Day Photography Competition, or to submit an entry, please visit:

www.southgippsland.vic.gov.au/australiadaycompetition

Entries close Wednesday 15 January 2025.

Winners will be announced on Friday 26 January 2025.

COUNCIL MEETINGS

Wednesday 11 December 2.00pm (Council Chambers, Leongatha)

Dates are also listed on Council's website at: www.southgippsland.vic.gov.au/meeting-dates

To watch the 'open' part of the meeting live or when it suits you, visit:

www.southgippsland.vic.gov.au/live

CHRISTMAS CLOSURES

South Gippsland Shire Council offices will be closed from 3.00pm Tuesday 24 December 2024 and will reopen Thursday 2 January 2025 at 10.00am. Council staff will be available on the phone and online from Thursday 2 January 2025 at 8.30am.

Bin Collections: Properties scheduled to have their kerbside bins emptied on Christmas Day

will be serviced on Thursday 26 December instead. This affects Bena, Loch, Mirboo North, Poowong, Dumbalk, Koowarra, Meeniyan, Nyora and Tarwin.

Visitor Information Centre, Foster: 7 days a week, 10.00am to 4.00pm. Closed Christmas Day. Phone 1800 630 704.

Coal Creek: 7 days a week, 10.00am to 4.00pm. Last entry 3.30pm. Closed Christmas Day.

South Gippsland Citizen's Advice Bureau and Visitor Information, Leongatha: Closed 24 to 26 December, 31 December and New Year's Day. Closed Sundays. Open 10.00am to 2.00pm outside those days. Phone 5662 2111.

Maternal and Child Health: Centres are open (except for public holidays) but limited to Key Ages and Stages (KAS) checks. Appointments required. For support, call 5662 9294. Council

and community playgroups do not run during school holidays. Go to www.playgroup.org.au to find contact details for your local playgroup.

Public Immunisation: Sessions will not be held in the first week of January but will recommence on 13 January. Go to: www.southgippsland.vic.gov.au/immunisation

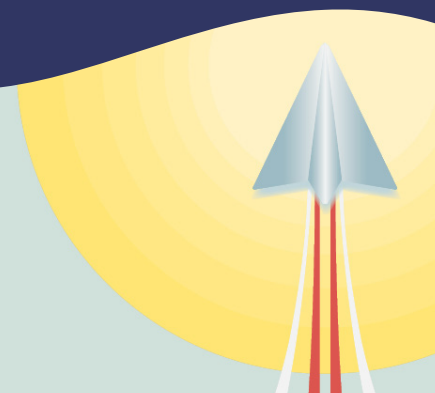
Waste Management: All transfer stations and the Koonwarra landfill are also closed on Christmas Day. Operate as scheduled all other times. Opening hours are displayed at sites and on: www.southgippsland.vic.gov.au

CONTACT US

9 Smith Street, Leongatha
15 Little Commercial Street, Korumburra
03 5662 9200

www.southgippsland.vic.gov.au

SOUTH GIPPSLAND SHIRE COUNCIL
South Coast Community
Leadership Program



Applications are now open for the South Coast Community Leadership Program.

This free six-month course is designed to help community members build their leadership skills, explore new ways of leading, and connecting with other like-minded local people.

This is an opportunity to upskill that you won't want to miss.

For more information and to apply, please visit: www.southgippsland.vic.gov.au/leadership