



KORUMBURRA SKATEPARK

FINAL CONCEPT DESIGN REPORT - NOVEMBER 2023

CONVIC

PREPARED BY

CONVIC

FOR



South Gippsland
Shire Council

QUALITY INFORMATION

PROJECT NAME Korumburra Skatepark
PROJECT NO. 23066
PREPARED BY Angus Thomas
REVIEWED BY Bryce Hinton

ACKNOWLEDGEMENTS

Convic Pty Ltd. acknowledge the contributions of all those who participated in Korumburra Skatepark project, including the South Gippsland Shire Council, residents, community groups and other stakeholders who responded to the various opportunities for input and/or who provided advice and information where required.

CONTENTS

PAGE

01	Background	03
02	Site Analysis	04
03	Conceptual Progression	05
04	Concept Plan	07
05	Perspectives	08
06	Skate and Material Palette	12
07	Next Steps	13

REVISION HISTORY

REVISION	REVISION DATE	DETAILS	AUTHORISED	
			NAME / POSITION	SIGNATURE
A	27.10.2023	DRAFT CONCEPT DESIGN	BRYCE HINTON / DESIGN MANAGER	
B	01.12.2023	FINAL CONCEPT DESIGN	BRYCE HINTON / DESIGN MANAGER	

© CONVIC Pty Ltd. All rights reserved.

CONVIC has prepared this document for the sole use of the Client and for a specific purpose, each as expressly stated in the document. No other party should rely on this document without the prior written consent of CONVIC. CONVIC undertakes no duty, nor accepts any responsibility, to any third party who may rely upon or use this document. This document has been prepared based on the Client's description of its requirements and CONVIC's experience, having regard to assumptions that CONVIC can reasonably be expected to make in accordance with sound professional principles. CONVIC may also have relied upon information provided by the Client and other third parties to prepare this document, some of which may not have been verified. Subject to the above conditions, this document may be transmitted, reproduced or disseminated only in its entirety.

INTRODUCTION

This report outlines the development of the conceptual design for the Korumburra Skatepark. In 2019 CONVIC designed a skatepark located adjacent the Korumburra Train Station, which has since been integrated into a broader precinct design by Three Acres Landscape Architecture. In 2023, South Gippsland Shire have re-engaged CONVIC to develop their original skatepark design into a larger facility.

Responding to Three Acres masterplan, the updated design will integrate and compliment the proposed development. The skatepark will create a local level facility catering to the needs of young people of the Korumburra region, and be part of a broader network of skateparks attracting users from the greater South Gippsland Shire area.

The following report explains the approach and principles utilised to create a comprehensive design response.



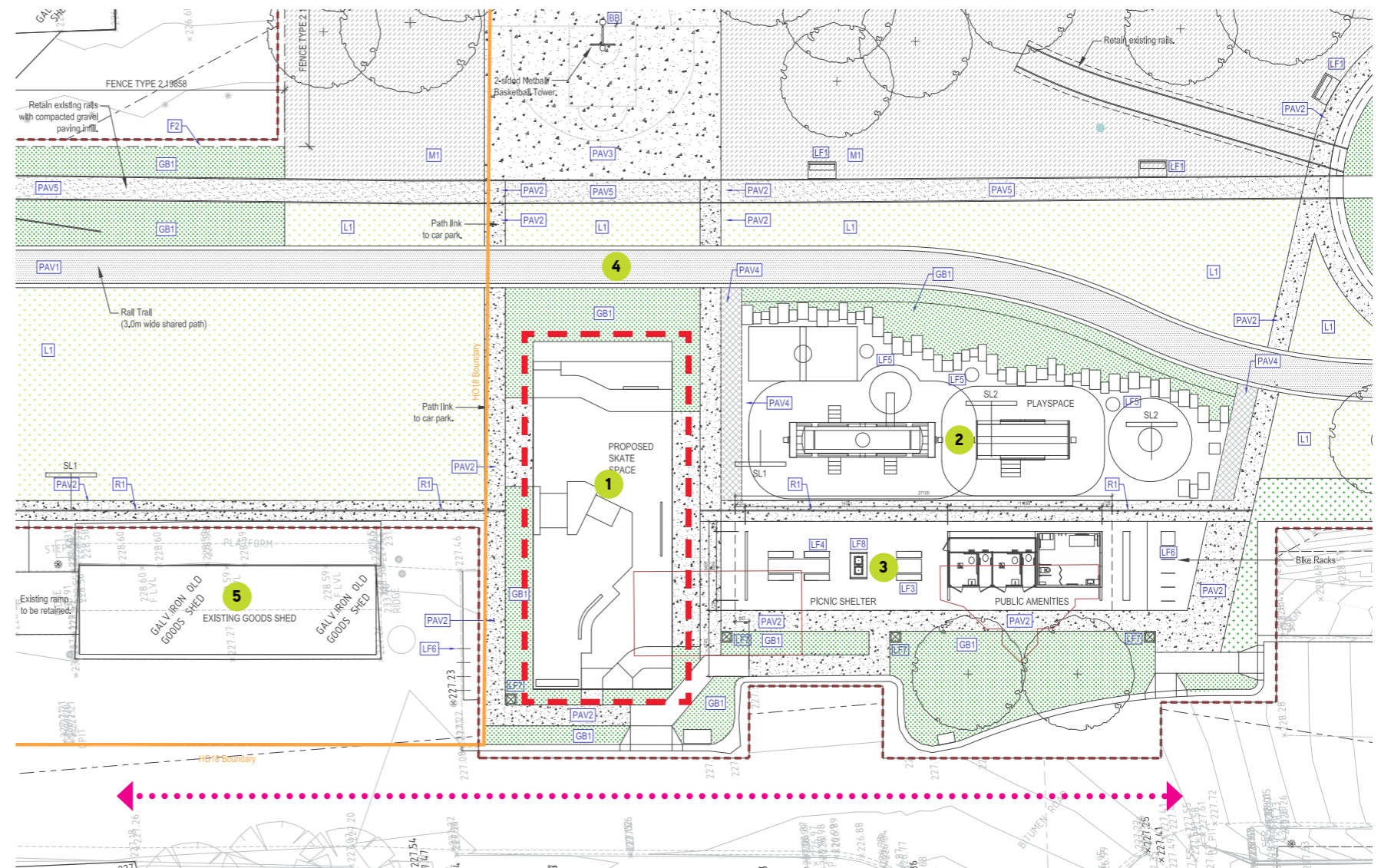
Masterplan perspective by Three Acres Landscape Architecture.

SITE CONTEXT

The site selected for the Korumburra skatepark is located adjacent the Korumburra Train Station. The original skate park design from 2019 did not account for recent proposed wider precinct works. The developed masterplan now poses the following issues:

- Footpath network disrupted by skatepark. No direct access to shelter.
- Minimal space between skatepark entry, proposed footpath and road edge.
- Playground interface clash, no buffer between playground and skate flow lines.
- The original skatepark design has tight feature spacing and compromised functionality to suit original budget requirements.

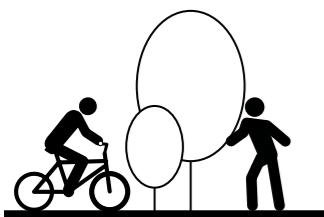
Overall, the original skatepark design does not compliment the proposed masterplan development and cater for growing community size requirements.



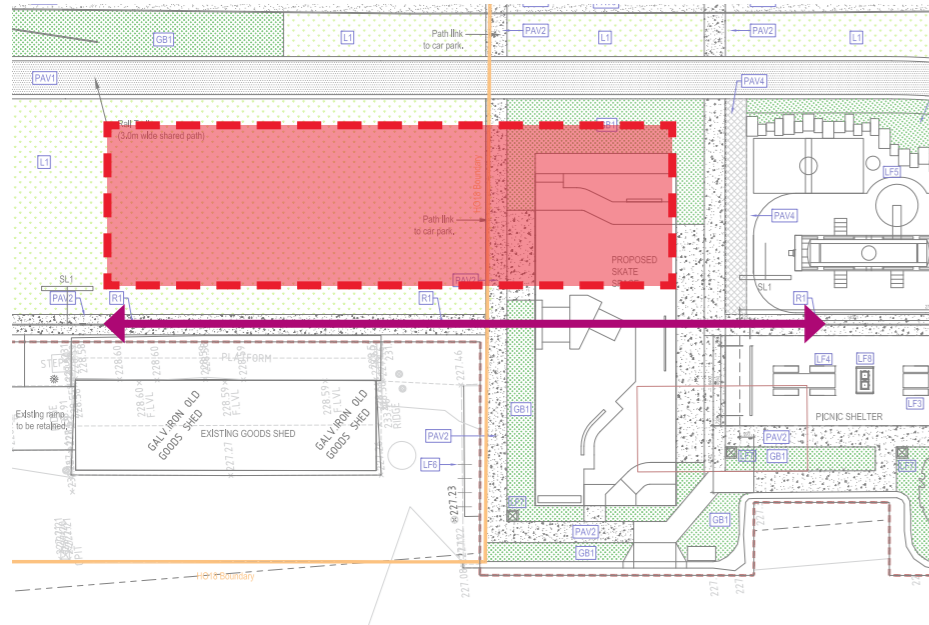
Site Plan by Three Aces Landscape Architecture.

SITE FEATURES

- 1 Original skatepark design
- 2 Proposed playground
- 3 Proposed shelter and amenities
- 4 Proposed rail trial
- 5 Existing goods shed

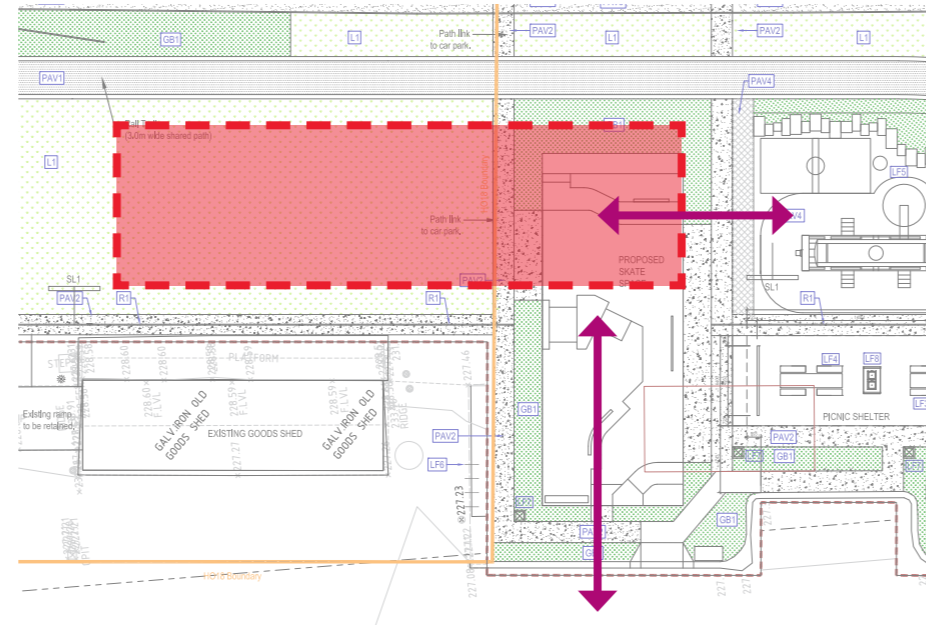


- ◀...▶ Vehicle traffic routes
- - - Proposed original skatepark area



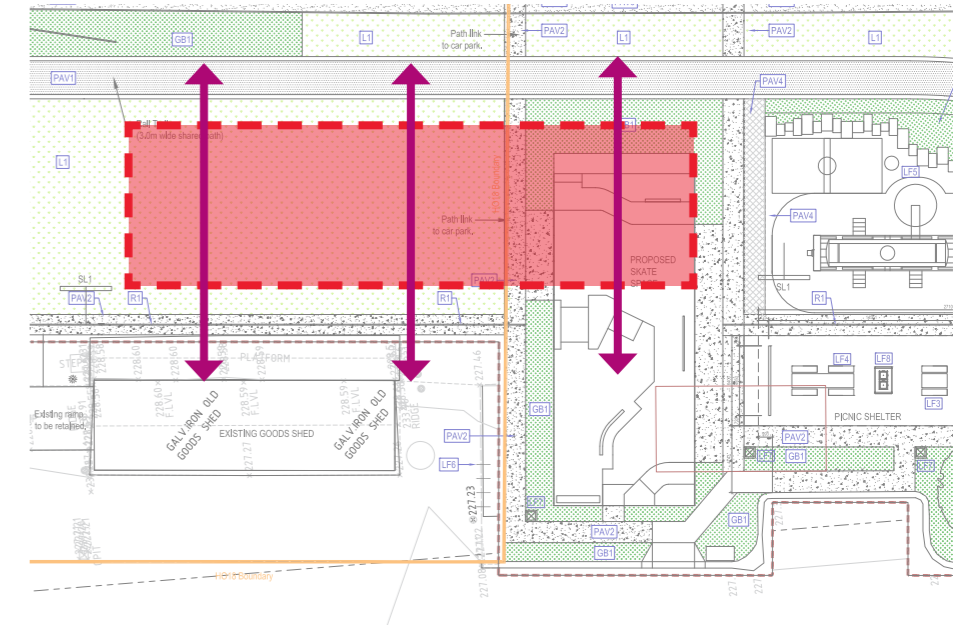
ROTATE SKATEPARK

Rotating the skatepark site 90 degrees will increase functionality and allow size increase for design opportunity. This orientation also allows direct pedestrian connection from the proposed shelter to other areas of the wider development.



EDGE BUFFERS

The rotated orientation forms buffers to adjacent edges. The playground interface now has skatepark platform to deter active users moving into skate flow areas. The skatepark is now also setback from the street edge away from vehicle paths.



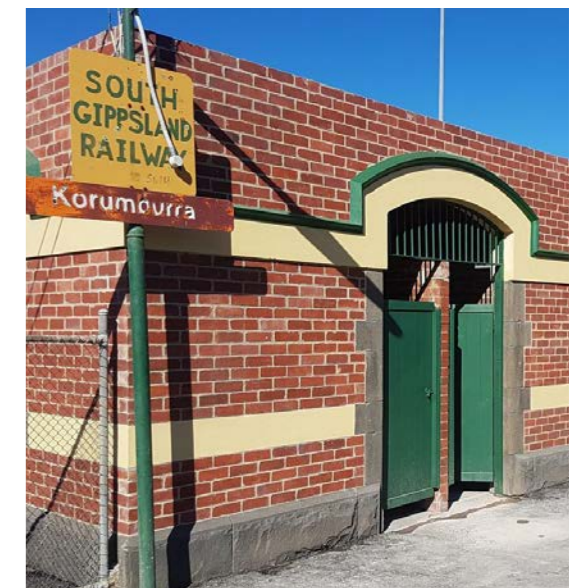
SIGHT LINES

The skatepark design has developed with low height ramps and obstacles to minimize impact on sight lines through the space. Material and colour selection has also developed to ground the precinct and tie in with natural tones. Sitting adjacent the Goods Shed and Railway Station, heritage values must be considered with built form to be sympathetic to surrounding infrastructure.

KORUMBURRA RAILWAY STATION

The historic railway station and industry that drove the development of this site has been used to inspire the concept design. Located north east of the skatepark site, the design has developed to tie in with its aesthetic and heritage values.

Brick and industrial steel materials have been incorporated into the design with a central train line base aesthetic and feature recycled train track skate obstacle. Vertical faces of the design are to integrate brick to connect aesthetics and key views with the station.



CONCEPT PLAN

LEGEND

SKATE WORKS

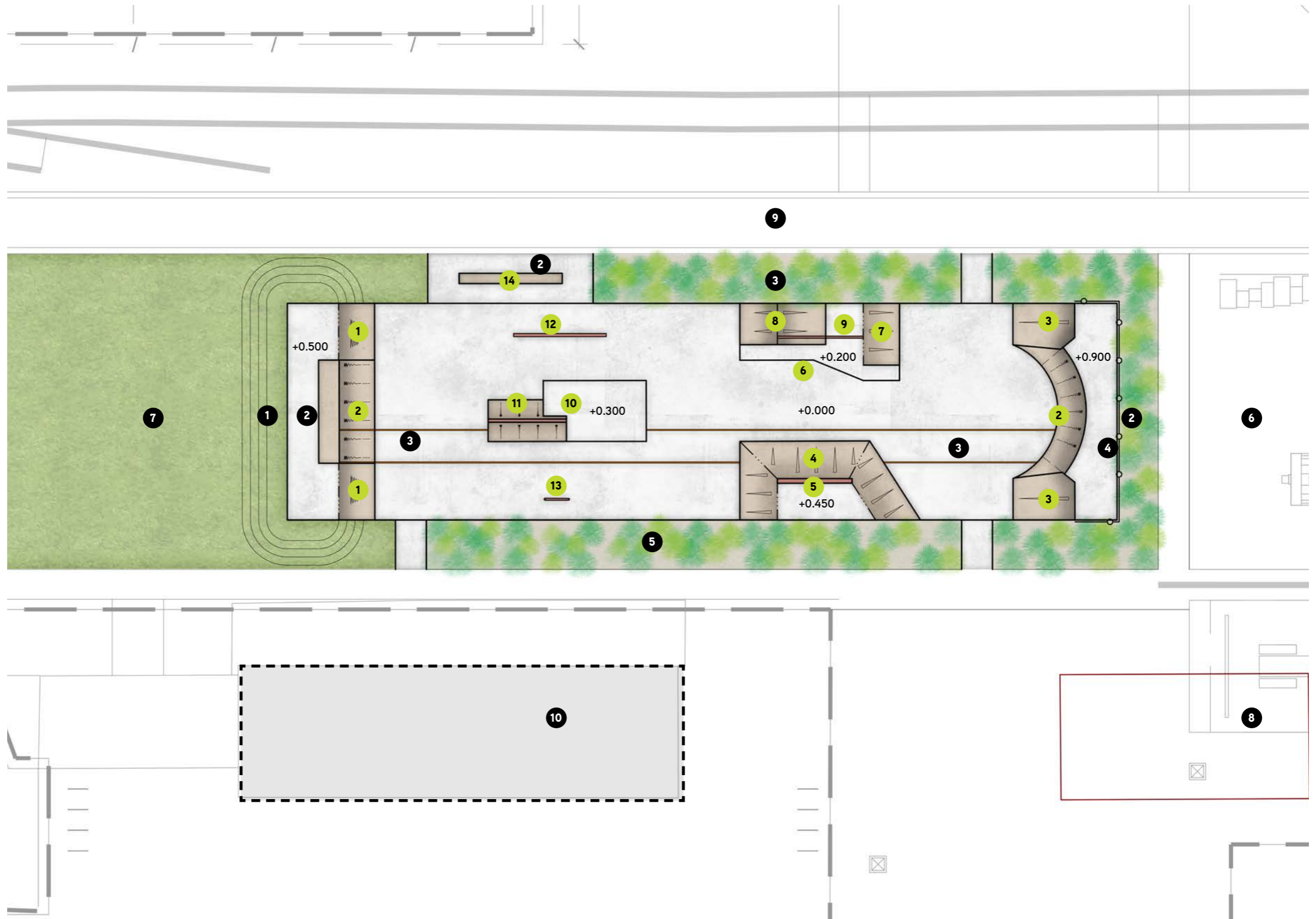
- 1 500H Roll in
- 2 900H Quarter pipe
- 3 900H Bank
- 4 450H Bank hip
- 5 150H Bank kerb
- 6 200H Kerb pad
- 7 200H Bank
- 8 400H A-frame
- 9 350H Down rail
- 10 300H Manual pad
- 11 750H Spine
- 12 250H Recycled rail track rail
- 13 300H Rainbow rail
- 14 450H Pedestrian seat

LANDSCAPE WORKS

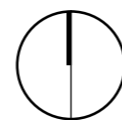
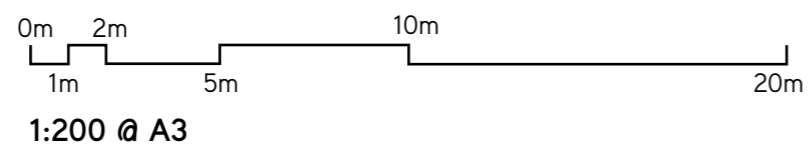
- 1 Low height earth mound
- 2 Downturn wall brick cladding
- 3 Feature train track stripes
- 4 Balustrades

WORKS BY OTHERS

- 5 Low level shrub planting
- 6 Proposed playground
- 7 Proposed passive lawn
- 8 Proposed shelter pavilion
- 9 Proposed shared pedestrian path
- 10 Existing goods shed



CLIENT



CONVIC

Unit 13, 46-50 Regent Street
 Richmond VIC 3121
 T (03) 9486 9899
 Convic.com

PROJECT
 KORUMBURRA SKATE
 PARK
TITLE
 CONCEPT PLAN

DATE
 01.12.2023
REVISION
 A







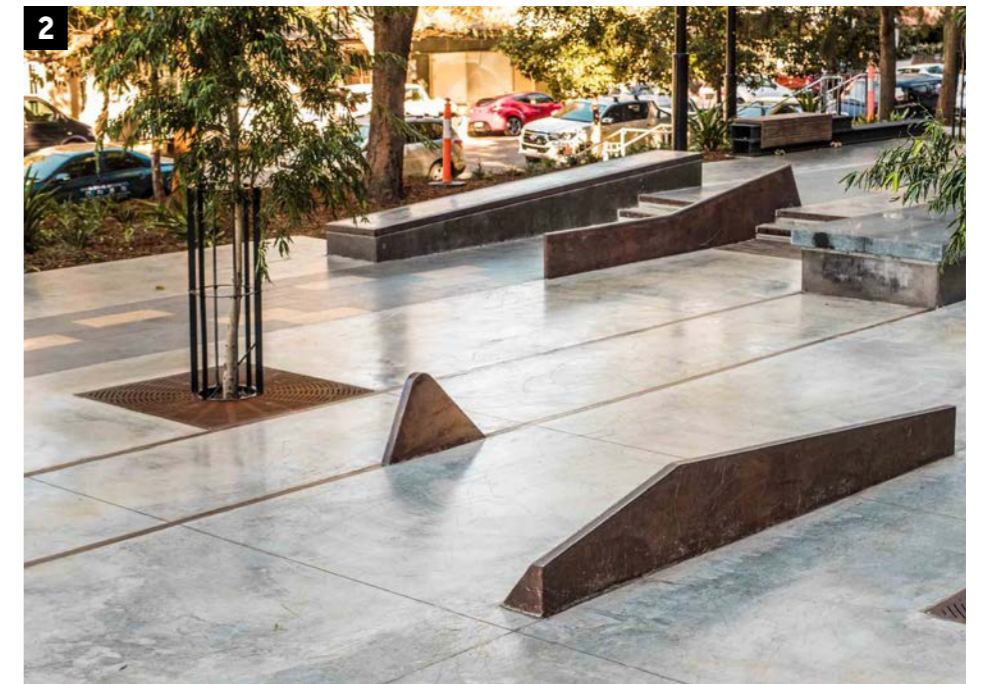
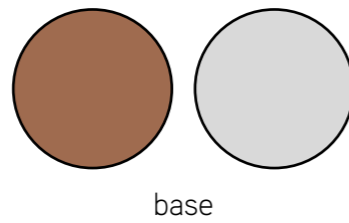
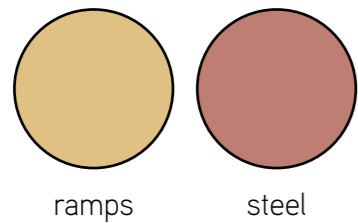


SKATE REFERENCE IMAGES

Skate obstacles have been designed to create a unique rider experience with features that are multifunctional and can be used in a variety of ways. Low height elements have been developed to maintain sight lines to the Railway Station and Goods Shed to celebrate heritage values.

Earthy colour tones have been selected to sit the skatepark into its landscape, with brown and grey concrete forming the main palette. Vertical faces of the design are to be clad with brick and tie in with heritage aesthetics of the railway station. Steel elements and balustrades are to be applied with terracotta highlights and connect with the train station and goods shed finishes.

1. Quarter return
2. Feature 'train tracks' base
3. Rainbow rail
4. Brick cladding



MOVING FORWARD

Once the South Gippsland Shire Council has approved the concept design report, the document should be utilised for design and construction procurement.

During the next stages of project development it is recommended the community is engaged for input to finalise the design. As well as creating a truly relevant design, this review and community input will ensure the final concept design reflects community needs, user requirements and the overall project vision. This continued involvement will connect the South Gippsland Shire community with the project design process and ultimately create a vested interest in the final outcome.

CONVIC

CREATE COMMUNITY

AUSTRALIA

UNIT 13, 46-50 REGENT STREET
RICHMOND VIC 3121 AUSTRALIA
T +61 3 9486 9899 F +61 3 9486 9088

MELBOURNE | SINGAPORE | DUBAI

CONVIC.COM