

**CONFIDENTIAL APPENDIX 2**

**Proposed 2016/17 Land Sales Program**

<b>1</b>	<b>Lot 7 LP1887 (Smith Street Loch)</b>
----------	---



<b>2</b>	<b>Reserve 1 LP87706 (82A Victoria Street Toora) <i>Drainage Reserve</i></b>
----------	--



<b>3</b>	<b>Lot 16 LP4756 &amp; Lot 1 TP145202 (Rear of Main Street Welshpool)</b>
----------	---



# CONFIDENTIAL APPENDIX 2

## Proposed 2016/17 Land Sales Program



**4** Lot 2 PS448872 (13 Symmons Street Leongatha)

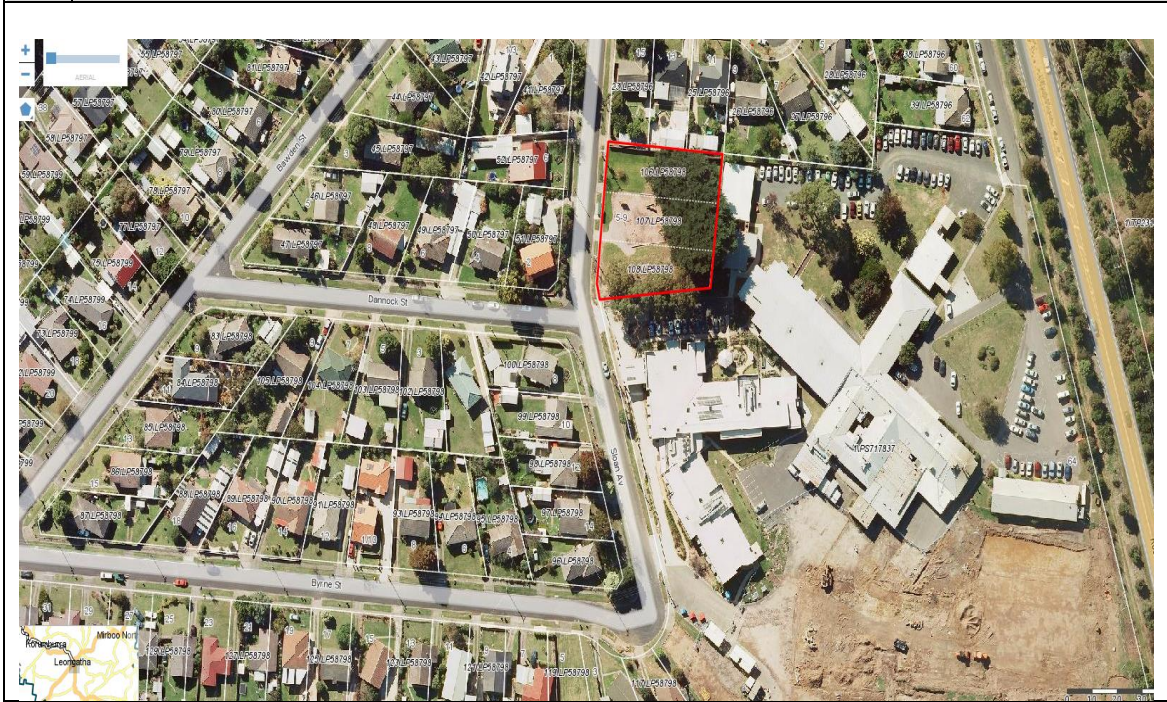




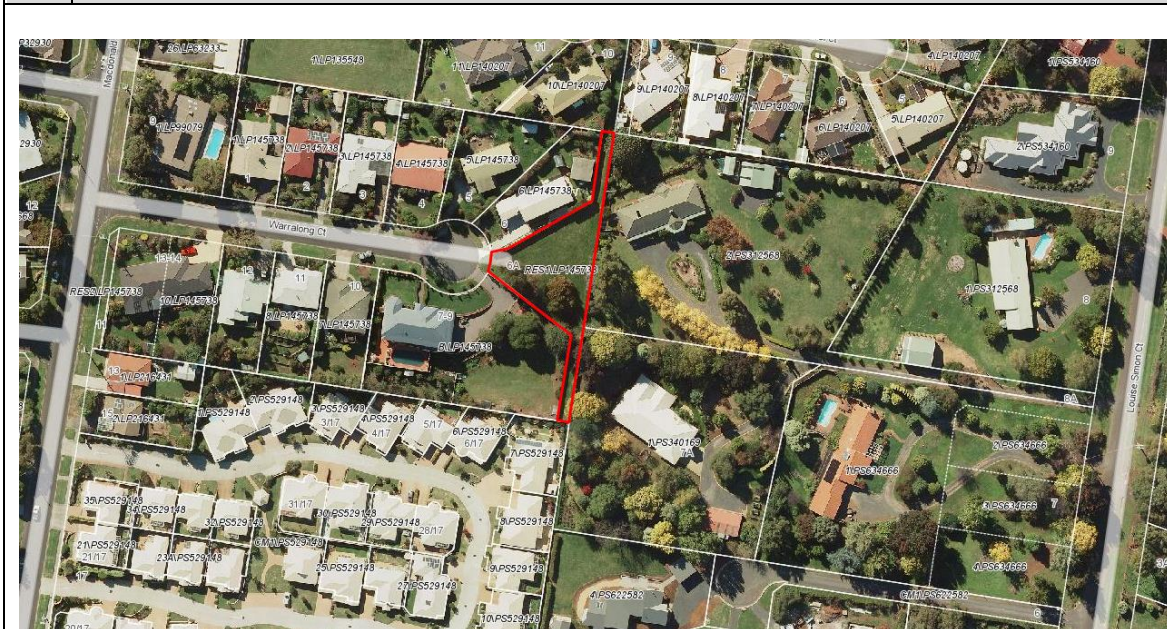
**CONFIDENTIAL APPENDIX 2**

**Proposed 2016/17 Land Sales Program**

<b>5</b>	<b>106, 107 &amp; 108 LP58798 (5 Sloan Avenue Leongatha)</b>
----------	--



<b>6</b>	<b>Reserve 1 LP145738 Warralong Court Leongatha</b>
----------	---





**CONFIDENTIAL APPENDIX 2**

**Proposed 2016/17 Land Sales Program**

<b>7</b>	<b>CA3 Section 1 Parish Tarwin CT 2470/902 (29 River Drive Tarwin Lower)</b>
----------	--



<b>8</b>	<b>Reserve 1 LP56447 (3-5 Marine Parade Venus Bay)</b>
----------	--

